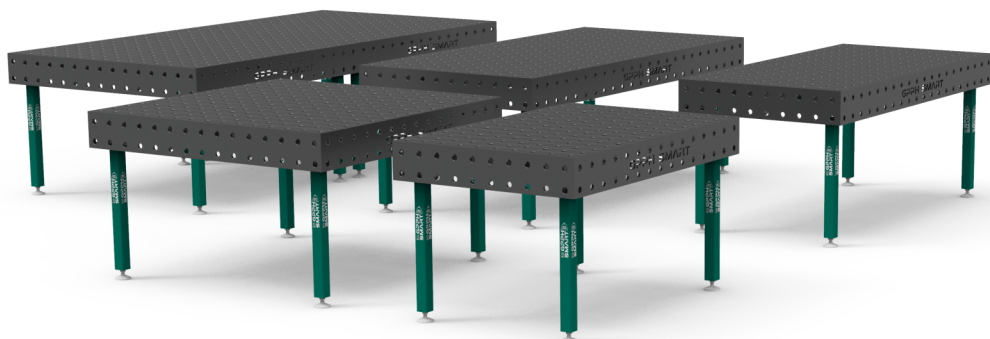


# GPPH SMART

## WELDING TABLES

■ ECONOMIC VERSION



**VAMATEC**

THE PLACE TO BE FOR THE METAL INDUSTRY

The new line of GPPH SMART welding tables is an economical alternative that combines functionality with an attractive price. Created for users who need essential welding tools, but do not require the advanced features of professional equipment. Ideal for those who value reliability and affordability.

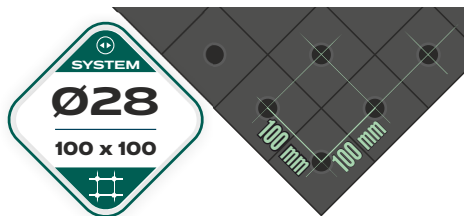
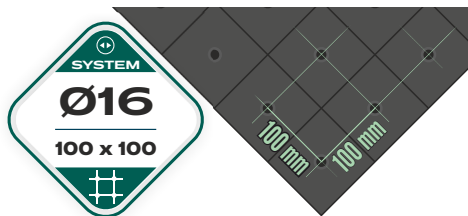
GPPH SMART welding tables is a line of economical welding tables, which is available in two series:

- with table tops of thickness **15 mm (SMART15)**
- with table tops of thickness **12 mm (SMART12)**

All tables come in the version with legs on feet or on wheels.



Depending on your preference, you can choose **GPPH SMART 15** or **GPPH SMART 12** welding tables with  $\Phi 16$ mm or  $\Phi 28$ mm hole system in 100x100 grid.



### AVAILABLE WELDING TABLE DIMENSIONS GPPH SMART 15 AND GPPH SMART 12

1500x1000

1500x1480

2000x1000

2400x1200

3000x1480\*

\*The table 3000x1480 mm consists of two connected tables of 1500x1480 mm.

## PRICE-LIST FOR TABLES WITH LEGS ON FEET

with hole system  $\varnothing$ 16mm and  $\varnothing$ 28mm in 100x100 grid

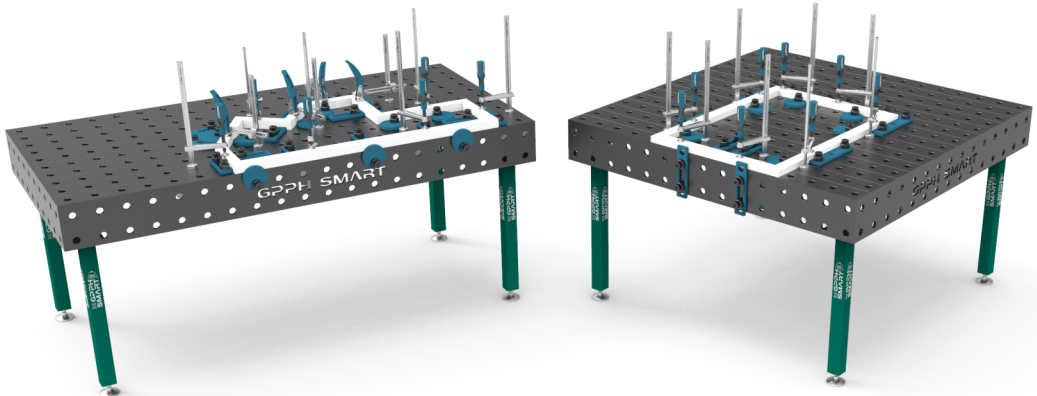
Table top	Net price GPPH SMART 15	Net price GPPH SMART 12
1500x1000	1 580 EUR	1 120 EUR
1500x1480	1 840 EUR	1 260 EUR
2000x1000	1 720 EUR	1 220 EUR
2400x1200	2 170 EUR	1 490 EUR
3000x1480*	3 680 EUR	2 520 EUR



## PRICE-LIST FOR TABLES WITH LEGS ON WHEELS

with hole system  $\varnothing$ 16mm and  $\varnothing$ 28mm in 100x100 grid

Table top	Net price GPPH SMART 15	Net price GPPH SMART 12
1500x1000	1 750 EUR	1 290 EUR
1500x1480	2 010 EUR	1 430 EUR
2000x1000	1 890 EUR	1 390 EUR
2400x1200	2 340 EUR	1 660 EUR
3000x1480*	4 020 EUR	2 860 EUR



\*The table 3000x1480 mm consists of two connected tables of 1500x1480 mm.

The differences between the economical welding tables **GPPH SMART 15**, and traditional, professional GPPH welding tables

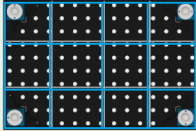
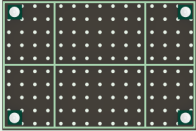
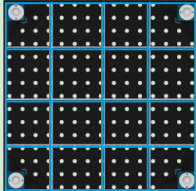
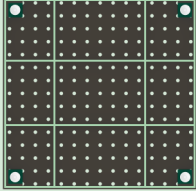
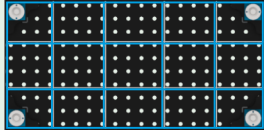
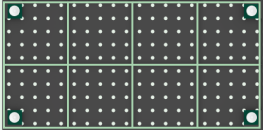
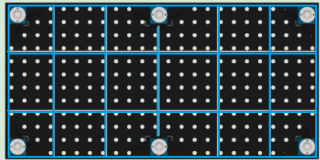
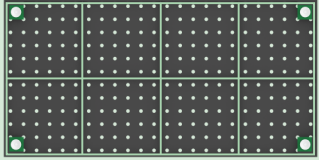
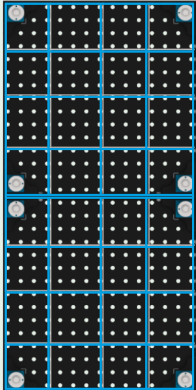
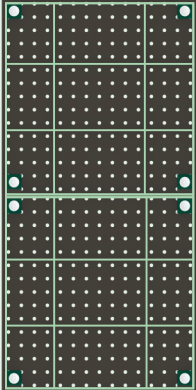
Series of traditional welding tables <b>GPPH PRO</b>	Series of economical welding tables <b>GPPH SMART 15</b>
Tolerance on flatness: $\pm 0,3$ mm on the whole table*	Tolerance on flatness: $\pm 0,5$ mm on the whole table*
3 rows of holes in the side wall	2 rows of holes in the side wall
Holes manufacturing tolerance: $+0,05$ mm	
Chamfered and milled holes	
Chamfered holes from bottom	
Milled edges of the tabletop	
Leg profile: 100x100x4 mm	Leg profile: 60x60x4 mm
Carrying capacity: 700kg / leg (Total load capacity for table with 4 legs: 2800kg)	Carrying capacity: max. 1800 kg
Number of dimensional versions: 10	Number of dimensional versions: 5
Sidewall deviation tolerance: $\pm 0,3^\circ$	Sidewall deviation tolerance: $\pm 0,35^\circ$
Available hole grids: 100x100mm, 50x50mm, diagonal	Available hole grids: 100x100mm

The differences between the economical welding tables **GPPH SMART 12**, and traditional, professional GPPH welding tables

Series of traditional welding tables <b>GPPH PLUS</b>	Series of economical welding tables <b>GPPH SMART 12</b>
Tolerance on flatness: $\pm 0,3$ mm on the whole table*	Tolerance on flatness: $\pm 0,5$ mm on the whole table*
3 rows of holes in the side wall	2 rows of holes in the side wall
Holes manufacturing tolerance: $+0,05$ mm	
Chamfered and milled holes	
Chamfered holes from bottom	
Milled edges of the tabletop	
Leg profile: 80x80x4 mm	Leg profile: 60x60x4 mm
Carrying capacity: 500kg / leg (Total load capacity for table with 4 legs: 2000kg)	Carrying capacity: max. 1200 kg
Number of dimensional versions: 10	Number of dimensional versions: 5
Sidewall deviation tolerance: $\pm 0,3^\circ$	Sidewall deviation tolerance: $\pm 0,35^\circ$
Available hole grids: 100x100mm, 50x50mm, diagonal	Available hole grids: 100x100mm

\*Provided the table is properly leveled.

Comparison of the ribbing of economical welding tables **GPPH SMART** with traditional professional GPPH welding tables

Table top	Ribbing in the professional version of tables <b>GPPH</b>	Ribbing in the economic version of tables <b>GPPH SMART</b>
1500x1000		
1500x1480		
2000x1000		
2400x1200		
3000x1480*		

\*The table 3000x1480 mm consists of two connected tables of 1500x1480 mm.

The differences between the economical welding tables **GPPH SMART** and traditional, professional welding tables **GPPH**

### COMPARISON OF LEG FIXINGS

professional tables **GPPH**



economic version of the tables **GPPH SMART**

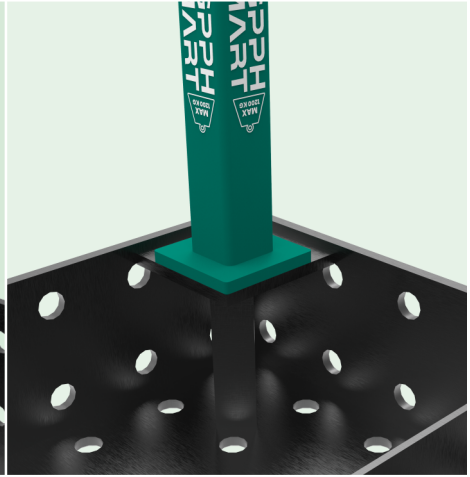
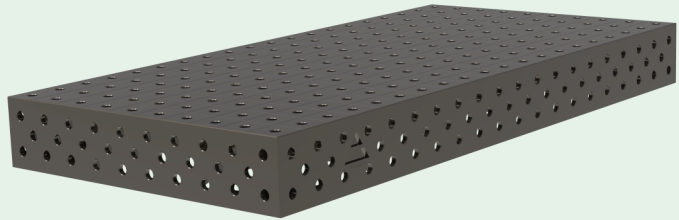


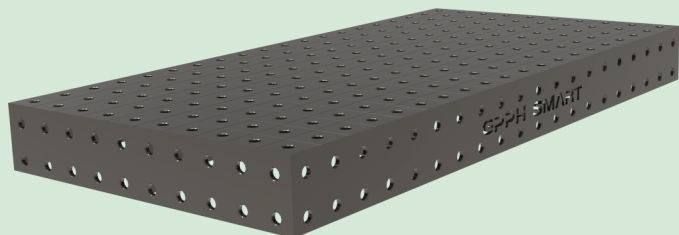
Table series  
**GPPH**

### COMPARISON OF SIDE WALL OPENINGS

professional  
tables **GPPH**



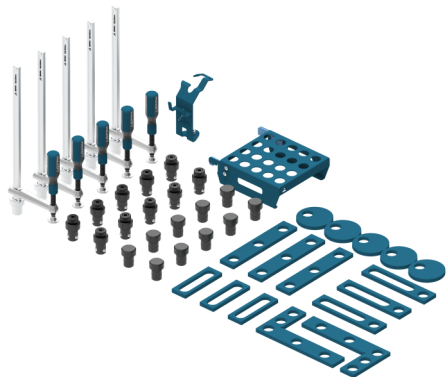
economic  
version  
of the tables **GPPH  
SMART**



Tools for economic welding tables **GPPH SMART** are available for tables with 15mm and 12mm thick tops

### THE NUMBER OF TOOLS INCLUDED IN EACH SET

TOOL NAME	SMART SET NO. 1	SMART SET NO. 2
Fast assembly bolt	10	5
Positioning pin	10	5
Fastening clamp	5	4
Stop 150	3	2
Stop 225	3	2
Stop 260	3	-
Eccentric stop	5	2
Angle precision square (Flat) 275x150	2	-
Fast assembly bolt shelf S	-	1
Fast assembly bolt shelf M	1	-
Welding torch handle	1	1
Total number of tools included in the set	43	22



#### PRICE OF SMART SET NO. 1

15mm	1 243 EUR
12mm	1 067 EUR

#### PRICE OF SMART SET NO. 2

15mm	601 EUR
12mm	528 EUR


**GPPH SMART** welding table tool sets are designed to get you started on welding tables, with flat structures.

If you need more tools, our standard offer includes tool sets of 146, 96, 60 or 28 items. Standard tool sets additionally include spatial tools, more types of clamps, extensions, mobile tool shelves or tool carts.

# GPPH SMART



THE PLACE TO BE FOR THE METAL INDUSTRY

**De Tonne 89-91 • Industriezone 5 • 9800 Deinze**  
**T 09 386 69 31 • F 09 380 38 41**  
**info@vamatec.be**  **visit us online [www.vamatec.be](http://www.vamatec.be)**

De in deze catalogus vermelde prijzen zijn ex-works fabriek Polen.