



Manual

Belt Grinding Machines

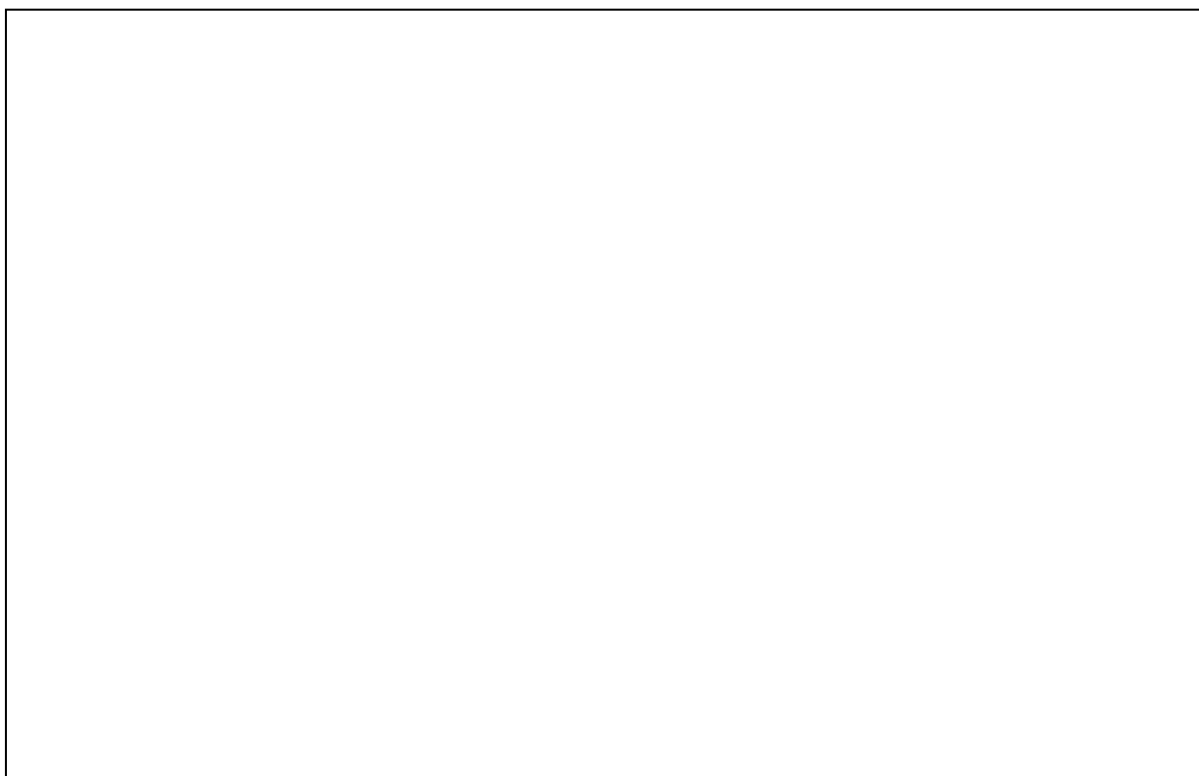
SILVERSTAR



CE

UK

PLEASE READ THIS MANUAL BEFORE USE



EC DECLARATION OF CONFORMITY



KEF-MOTOR A/S

Industrivej 3-9
DK-9460 Brovst, Danmark
www.scantool-group.dk
Tlf: +45 98 23 62 66
Fax.: +45 98 23 61 44

hereby declare that

Silverstar Belt Grinding Machines are manufactured in accordance with the provisions of the European Parliament and Council Directive 2006/42 / EC of 17 May 2006

And also in accordance with:

- EUROPEAN PARLIAMENT AND COUNCIL DIRECTIVE 2014/35 / EU of 26 February 2014
- EUROPEAN PARLIAMENT AND COUNCIL DIRECTIVE 2014/30 / EU of 26 February 2014

DK 9460 Brovst

A handwritten signature in blue ink, appearing to read 'Claus Nielsen'.

Claus Nielsen,
Producent

Table of Contents

EC DECLARATION OF CONFORMITY	2
<u>1.0 TRANSPORT & HANDLING</u>	<u>5</u>
1.1 TRANSPORT	5
1.2 HANDLING	5
1.3 PLACING	5
<u>2.0 DIRECTIONS</u>	<u>6</u>
2.1 OPERATION	6
2.2 SECURITY	6
2.3 MAINTENANCE	7
<u>3.0 SPARE PARTS LIST</u>	<u>9</u>
3.3 DRAWING FOR BELT GRINDING MACHINE WITH EXHAUST SYSTEM	9
3.4 SPARE PARTS LIST FOR BELT GRINDING MACHINE WITH EXHAUST SYSTEM	10
3.3 CYLON WITH STAND.	12
3.4 SPARE PARTS LIST FOR CYLON WITH STAND.	12
<u>TECHNICAL DATA</u>	<u>13</u>
4.1 TECHNICAL SPECIFICATIONS	13
4.2 DIMENSIONS	13
<u>5.0 WARRANTY</u>	<u>15</u>
5.1 GUARANTEE	15

1.0 Transport & Handling

1.1 Transport

The Silverstar belt grinding machine is packed in protective wrapping and delivered on a pallet with the following measures: 120 x 80 x 120 cm

1.2 Handling

The machine can easily be transported on the pallet on which it is delivered.

1.3 Placing

Mounting of the belt grinder must take place on a firm and level ground. The machine must be fastened to the ground by means of the four fittings which are used to fasten the belt grinder to the pallet.

The machine is provided with no-volt release protection switch and connected for the wanted voltage (V). The electrical connection must be performed by an authorized electrician, and it is important to control that the motor (and ventilator) has the correct direction or rotation (please see the arrow on the motor).

Eye shields, suction hose and perhaps dust bag must be mounted before use. The clamps for mounting the suction hose are placed in the dust bag. The eye shields (A) must be mounted into the eye shield fitting (see *fig.: 1.1*).

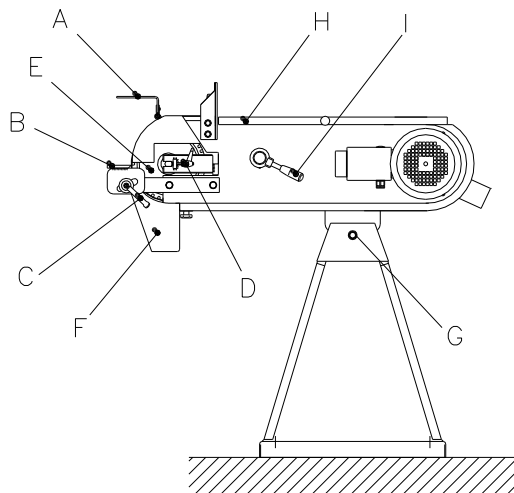


Fig.: 1.1

The tool rest (B) must be mounted at minimum 2 mm from the belt, and the handle (C) must be fastened. Turn the contact wheel by your hand and adjust the belt by means of the handle (D) until it runs just on the contact wheel (E). It must be controlled that the spark box (F) is properly fastened. The wanted working height is adjusted by bolt/locknut (G).

2.0 Directions

2.1 Operation

After adjustment and connection, the belt grinding machine is ready for use. The grinding can take place by the contact wheel (E) or on the surface grinding table by opening the cover (H). The lifetime of a new belt is prolonged if the grinding starts with a light pressure.

Please note these safety rules: the machine is designated for use only with non-spark materials, such as Aluminium-bronze- yellow metal.

Never use steel or any type of metal that when grinded will dispose sparks.

2.2 Security

The existing safety rules must be kept in order to avoid personal or material injury when working with the belt grinder.

A. User

Do not wear loose clothing, gloves, rings, bracelets, or other jewellery to get caught in moving parts. Nonslip footwear is recommended. Wear protective hair covering to contain long hair.

Always wear eye protection and face or dust mask if the operation is dusty. Ordinary glasses cannot replace eye protection.

Don't overreach. Keep proper footing and balance at all times.

Never leave tool running unattended. Turn power off. Don't leave tool until it comes to a complete stop.

Don't operate tool while under influence of drugs, alcohol, or any medication.

B. Use of Machine

Use right tool. Don't force tool or attachment to do a job for which it was not designed.

Use recommended accessories. Consult the owner's manual for recommended accessories. The use of improper accessories may cause hazards.

C. Adjustment

Make all adjustments with the power off. In order to obtain the machine precision and correct ways of adjustment while assembling, the user should read the detailed instruction in this manual.

D. Working Environment

Keep work area clean. Cluttered areas and benches invite accidents.

Don't use in dangerous environment. Don't use power tools in damp or wet locations or expose them to rain. Keep work area well-lighted.

Keep children and visitors away. All children and visitors should be kept a safe distance from work area.

E. Maintenance

Disconnect machine from power source when making repairs.

Check damaged parts. To read every details of trouble shooting, repair it very carefully and make sure the operator won't get injured and damage the machine.

2.3 Maintenance

Empty the spark box with regular intervals and control if the suction canals need a cleaning. Empty or change the dust bag as required. The contact wheel should be replaced when the edges have been worn round or the tyre has been damaged. The graphite pad on the surface grinding table is changed as required.

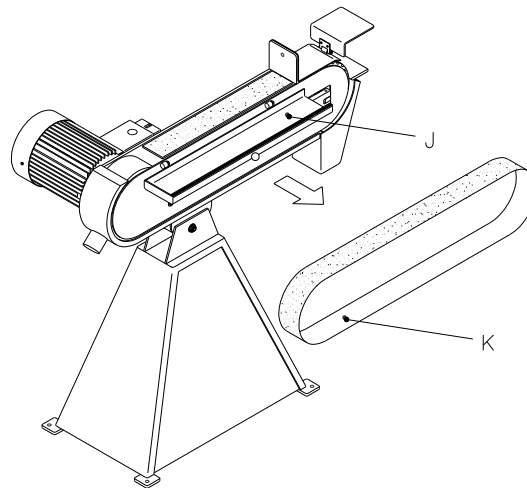


Fig.: 2.1

When changing the belt it is released by turning the handle (I) in anti-clock-wise direction (see *fig.: 2.1*), the cover (J) is opened and the worn-down belt (K) is removed by driving the belt against the direction of rotation, and the belt is removed from the machine by the drive wheel. The new belt is fitted. It must be checked that the direction of the arrows on the back side of the belt correspond to the direction of rotation. The handle (I) is turned clockwise until grinding belt is tightened. Check for alignment by turning the grinding belt by hand and adjust with handle (D)

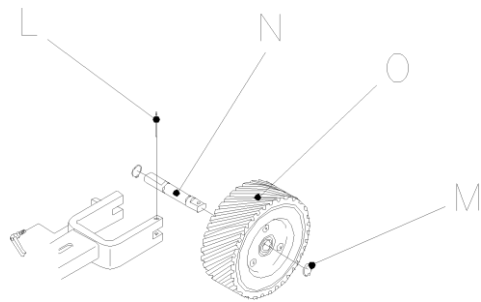
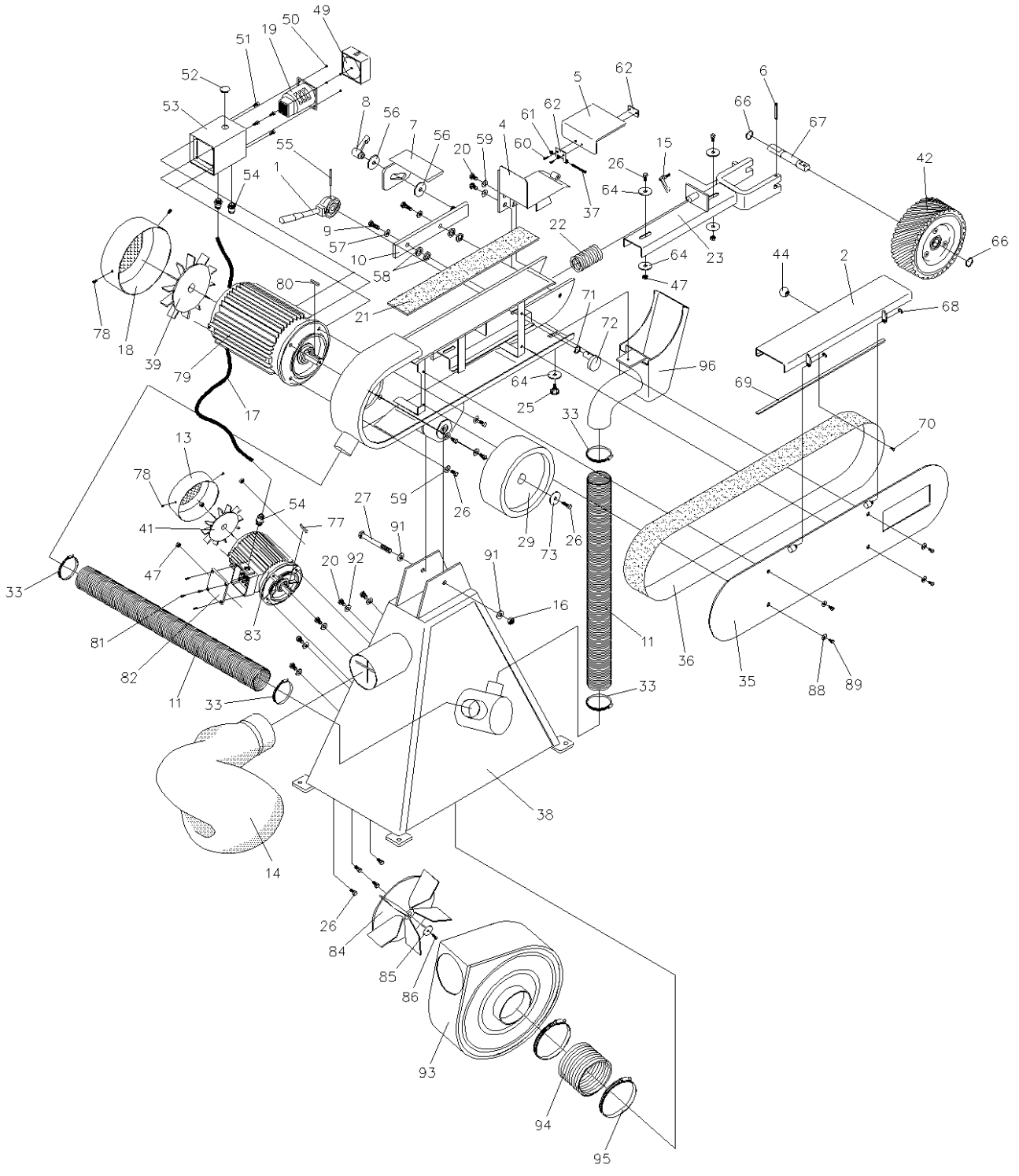


Fig.: 2.2

To change the contact wheel remove the grinding belt, tool rest and spark arrester. Use a 6 mm mandrel to hammer out the pin (L). Now the contact wheel with axle and bearings can be taken out. One of the lock rings (M) and the axle (N) can be taken out. The new contact wheel (O) is fitted in in reverse order.

3.0 Spare Parts List

3.3 Drawing for Belt Grinding Machine with Exhaust System



3.4 Spare parts Machine with

Fig.: 3.2

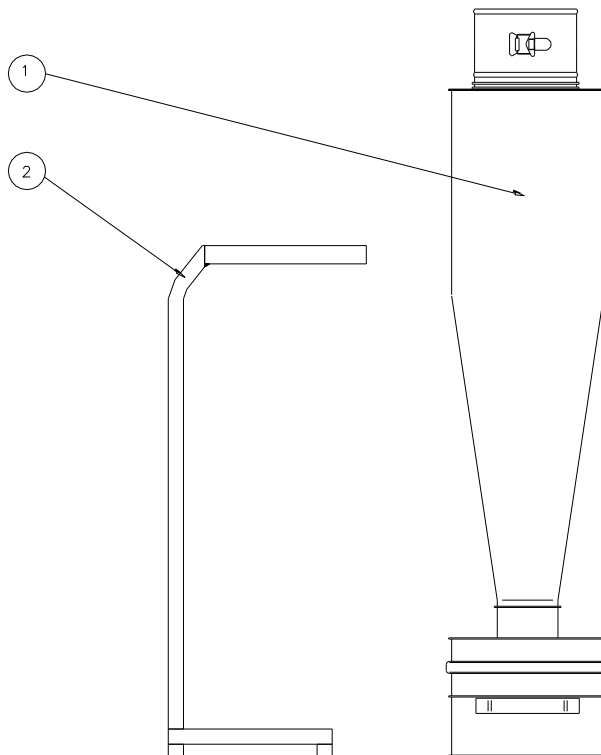
List for Belt Grinding Exhaust System

When ordering spare parts please state machine type and serial number together with item number and description of the part according to this list.

Item No.	Description	
1	Belt release handle	0102267
2	Belt guard	1055603
4	Spark arrester/tool rest	1055618
5	Eye shield	0233605
6	Split pin $\varnothing 6 \times 50$ mm	0233050
7	Tool rest	1055610
8	Handle for tool rest	0233808
9	Screw M10x25	0300134
10	Support for tool rest	0104373
11	Suction hose $\varnothing 63$	7891011
13	Fan cover for exhaust motor	2075180
14	Dust bag	0811793
15	Handle M6x25	0233025
16	Lock nut M12	0231345
17	Cable	0963084
18	Fan cover for motor	2031017
19	DISA switch	0188826
20	Screw M8x12	0300144
21	Graphite pad	0233221
22	Spring 5,5x43x125x11 mm	0102265
23	Cradle for contact wheel	0110223
25	Star handle $\varnothing 32$ M6x16	0233806
26	Screw M8x20	0233020
27	Screw M12x100	4567832
29	Drive wheel	7520028
33	Hose strap 58-75 mm	0233058
35	Side plate	1055619
36	Grinding belt	-
37	Screw M6x45 CH	0950614
38	Dust extractor	0233853
39	Fan wheel for motor	2031016
41	Fan wheel for exhaust motor	2031015
42	Contact wheel with ball bearings	1535005
44	Ball handle M6x $\varnothing 25$	0331662

47	Lock nut M8	0231347
49	Contact for DISA switch	0110049
50	Sheet metal screw 2.9x6.5	0110050
51	Screw CH M5x10	0120628
52	Blind stopper Ø20	0105153
53	Box for DISA switch	0105152
54	Cable disc PG 11	0105154
55	Split pin Ø4x50 mm	3454351
56	Disc 10x45x4	0860327
57	Disc 10mm	0101491
58	Disc 10mm	2323212
59	Disc 8 mm	5437850
60	Screw M4x8	0100425
61	Lock nut M6	0951406
62	Hinge mounting for eye shields	0921475
64	Disc 8mm	6540981
66	Lock ring Ø20	0311262
67	Axle	0233251
68	Lock ring Ø7	0915720
69	Rubber list	0110069
70	Screw M6x12	0930612
71	Wave spring 14x0.3x21	0102268
72	Eccentric for 8 mm motor sheet	0752262
73	Disc 8mm	6540985
77	Parallel key 36x6x6	0110077
78	Screw M4x5	0737620
79	Motor	2030041
80	Parallel key	-
81	Screw M4x12	0737610
82	Cover for terminal box	0110082
83	Exhaust motor 0.5HP	2030039
84	Fan wheel large 250 mm	0995704
85	Disc 5mm	0233030
86	Screw M5x30	0331786
88	Disc 6mm	0737631
89	Screw M6x10	0110089
92	Disc 8mm	5437850
93	Suction box for exhaust system	2578909
94	Suction hose ø102 mm	6721303
95	Hose strap 90-110 mm	0233110
96	Spark box with exhaust system	1055600
97	Star M6	0233807
98	Plant to level	1055679

3.3 Cylon with stand.



3.4 Spare Parts List for Cylon with stand.

When ordering spare parts please state machine type and serial number together with item number and description of the part according to this list.

Pos. Nr.	Benævnelse	75X-2000
1	Cylon w/ Exhaust System	700681300
2	Stand to cyklon	1055595

Technical Data

4.1 Technical Specifications

Model	75X
Grinding belt	75x2000
Motor 3x380-440 V 50 Hz	4,1 HK
Class	IEC 34-1
IP Class	54
r/min.	2800
Amp	10.6/6.1
Cos φ	0,91
Belt speed	30 m/s
Contact wheel	Ø200x75
Fan motor	0,5 HK
Weight	111 kg

The noise level for Silverstar belt grinding machine has been measured to 85 dB(A) according to the measuring instruction in the note 561 from the Work Inspection Department on device of technical aids.

4.2 Dimensions

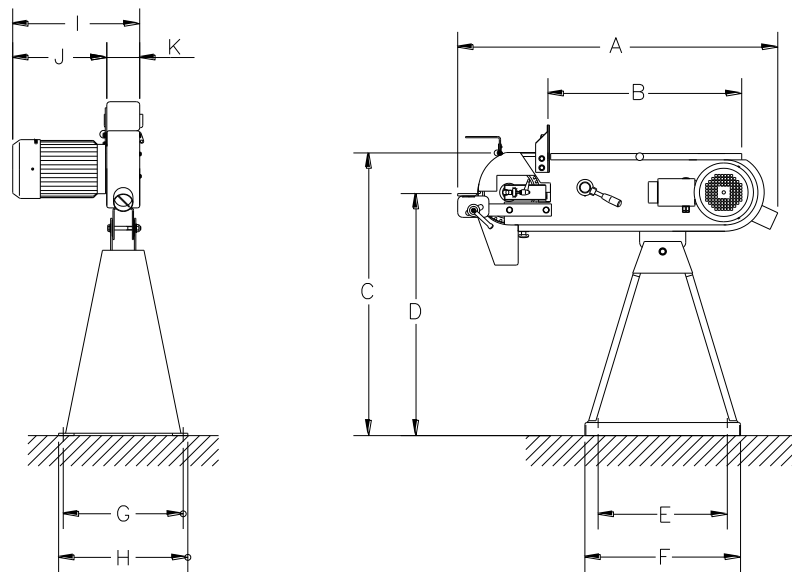
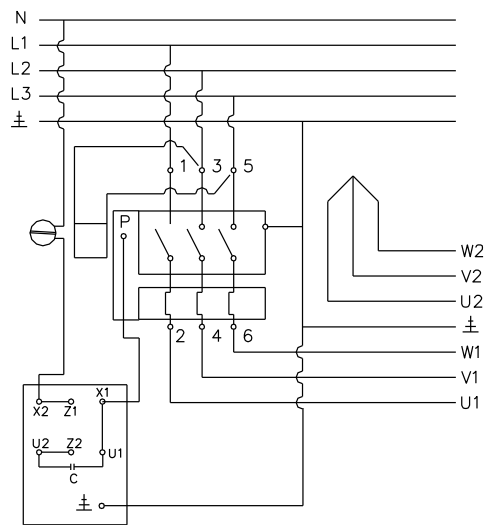


Fig.: 4.2

Model	A	B	C	D	E	F	G	H	I	J	K
75	995	540	945	830-970	605	635	365	395	413	306	107

4.3 Wiring diagram

Belt grinding machines can be connected to 3 x 400/440 V, 50/60 cycles and to Below please find a wiring diagram informing how to connect the machine to the wiring supply.



3x400/440 Volt, 50/60 cycles
with exhaust system

5.0 Warranty

5.1 Guarantee

If within 2 year of purchase this machine supplied by KEF A/S becomes defective due to faulty materials or workmanship we guarantee to repair or replace the machine or defective part or parts free of charge provided that:

1. The product is returned complete to one of our Service Branches or Official Service Agents.
2. The product has not been misused or carelessly handled and in particular has not been used in a manner contrary to the operating instructions.
3. Repairs have not been made or attempted by other than our own Service Staff or the staff of our Official Service Agents.
4. Documentary proof of purchase date is produced when the goods are handed in or sent for repair.
5. Wear parts are not covered by the warranty

KEF A/S offers you five years guarantee on the electrical motor if the motor becomes defective or even burns-out within the first 5 years from date of invoice