

HIGHLIGHT
TECHNOLOGY

+ PRECISION TOOLING

+ METROLOGY

+ MRO

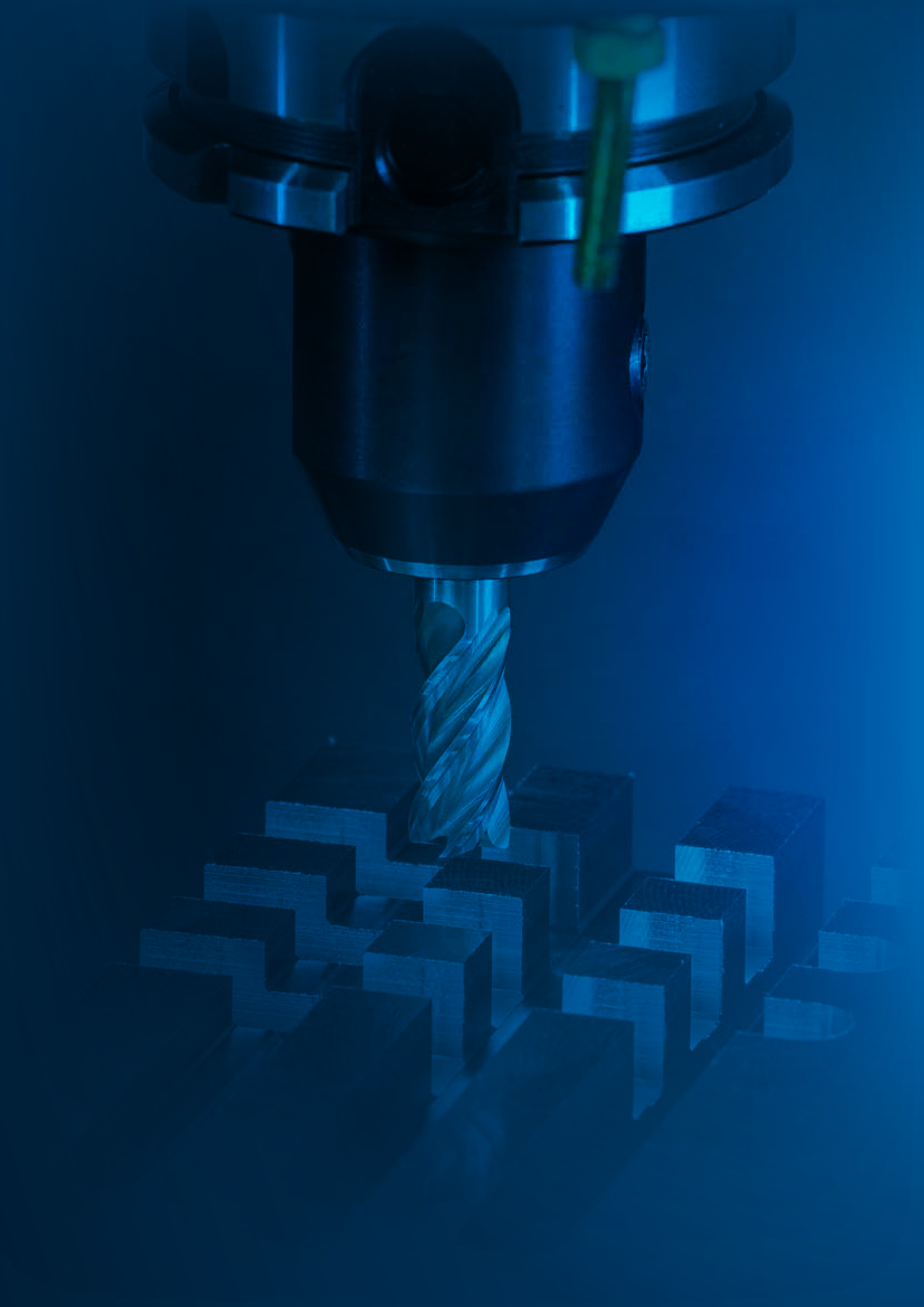
+ LUBRICANTS

+ HANDLING

HIGHLIGHT TECHNOLOGY

NET PRICES VALID UNTIL 31.01.24 (VAT EXCLUDED) - EN

HIGHLIGHT
TECHNOLOGY





The A + B Group is an industrial reality that has 14 companies producing and distributing products around 3 meters from the machine tool.



Worldwide we serve more than 15.000 customers.



We have 5 production sites where we develop highly technological products.

We guarantee high added value consultancy thanks to our strong territorial presence, with 120 technical engineers and product managers.



The technological level of the products we market are designed to reduce processing time, increase the production level and improve efficiency and operations within the mechanical workshop.



Our catalogue contains more than 27.000 items including both private and well known brands (Mituotyo, Milwaukee,...).

32

LUBRICANTS



04

PRECISION
TOOLING



38

MRO



in 3 m
everything



58

HANDLING



24

METROLOGY

eters
you need

PRECISION TOOLING



END MILLS WITH VARIABLE PITCH Z4

+ UNIVERSAL TOOL

Its unique characteristics means it can achieve excellent results when used for contouring roughing and wall finishing operations.

+ PLATEX - INNOVATIVE COATING

Specially designed for general purpose machining capable of withstanding up to 1,050 °C.

+ EXCELLENT ON STAINLESS STEEL AND TITANIUM ALLOYS

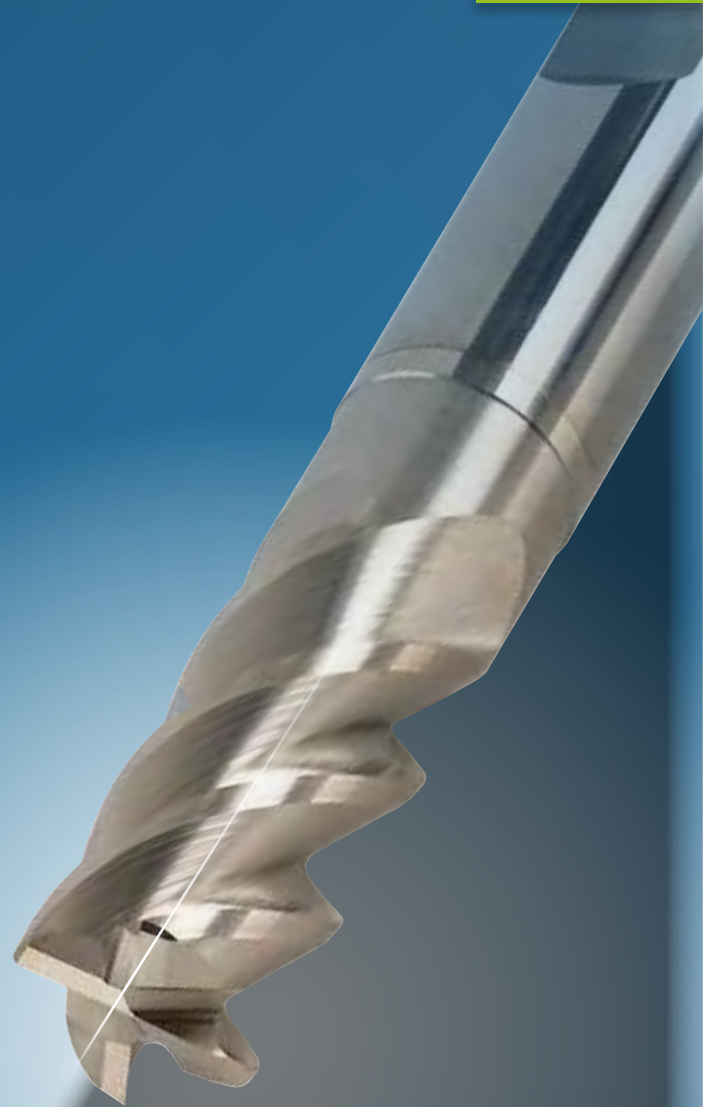
The design of the propeller simplifies the chip removal process.

+ SOFT CUT

A unique eccentric rake angle and variable propeller, ensures a long tool life without vibrations, ensuring soft and silent cutting.

+ EXCELLENT STABILITY DURING MACHINING

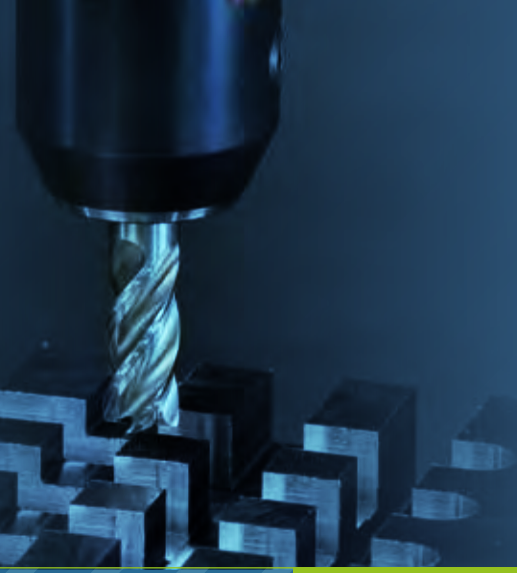
Even in conditions of poor stability, it always guarantees excellent levels of reliability and precise processing.



TOOL TYPE	TOOL DESIGN	TOOL DESIGN	INDEX	ANGLES	ZFP	DIRECTIONS	SHANK	CORNER	COATING	STANDARD
N	HPC	MTC	≠	λs= 64°/164° γs= 12°			DIN 635 HB		PLATEX	

CODE	Price List	HT	DC f8 mm	APMXS mm	DN mm	LH mm	OAL mm	DMM h5 mm	CHW mm	ZFP
A4U4403W	29,79	19,00	3	8	-	-	57	6	0,1	4
A4U4404W	29,79	19,00	4	11	-	-	57	6	0,1	4
A4U4405W	29,79	19,00	5	13	4,9	18	57	6	0,1	4
A4U4406W	29,79	19,00	6	13	5,9	18	57	6	0,1	4
A4U4408W	44,99	26,00	8	21	7,8	25	64	8	0,2	4
A4U4410W	56,79	35,00	10	22	9,7	30	72	10	0,2	4
A4U4412W	74,39	46,00	12	26	11,7	36	83	12	0,3	4
A4U4414W	102,69	63,00	14	26	13,7	36	83	14	0,3	4
A4U4416W	134,99	81,00	16	36	15,5	42	92	16	0,3	4
A4U4420W	193,49	120,00	20	41	19,5	52	104	20	0,3	4

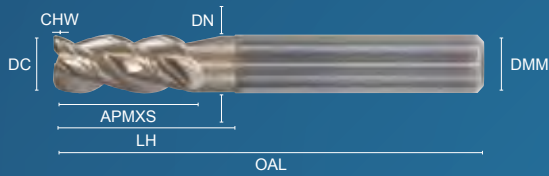
FOLLOW THE NEW PROGRAM KERFOLG UNIVERSAL



KERFOLG

END MILLS WITH VARIABLE PITCH Z3

NEW



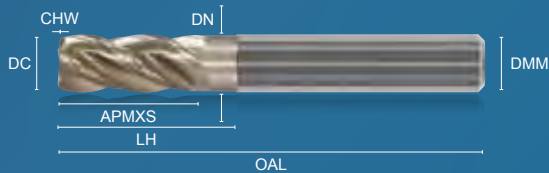
TOOL TYPE	TOOL DESIGN	TOOL DESIGN	INDEX	ANGLES	ZFP	DIRECTIONS	SHANK	CORNER	COATING	STANDARD
N	HPC	MTC	≠	λs=43°/λc° γs=12°			DIN 6350 HB DIN 6350 HA		PLATEX	
<p>SLOTTING </p> <p>SIDE MILLING </p> <p>RAMPING </p> <p>PLUNGING </p> <p>HELICAL INT. </p>										
<p>P M K N S H C</p>										

CODE	Price List	HT *	DC f8 mm	APMXS mm	DN mm	LH mm	OAL mm	DMM h5 mm	CHW mm	ZFP
A4U3902	43,53	27,00	2	5	1,92	10	57	6	0,1	3
A4U3903	43,53	27,00	3	8	2,9	15	57	6	0,1	3
A4U3904	43,53	27,00	4	11	3,9	16	57	6	0,1	3
A4U3905	43,53	27,00	5	13	4,9	19	57	6	0,1	3
A4U3906	45,77	28,00	6	13	5,9	19	57	6	0,1	3
A4U3907	62,39	32,00	7	19	6,8	25	63	8	0,2	3
A4U3908	62,39	32,00	8	19	7,8	25	63	8	0,2	3
A4U3910	86,63	53,00	10	22	9,7	30	72	10	0,2	3
A4U3912	120,78	74,00	12	26	11,7	36	83	12	0,2	3
A4U3914	159,50	98,00	14	26	13,7	36	83	14	0,2	3
A4U3916	241,43	149,00	16	32	15,5	42	92	16	0,2	3

KERFOLG

END MILLS WITH VARIABLE PITCH Z4

NEW

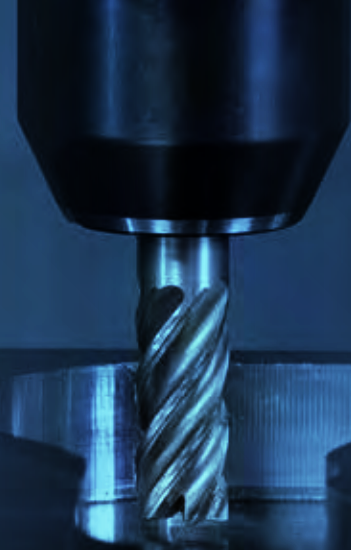


TOOL TYPE	TOOL DESIGN	INDEX	ANGLES	ZFP	DIRECTIONS	SHANK	CORNER	COATING	STANDARD	
N	HPC	≠	λs=35°/λc° γs=12°			DIN 6350 HB DIN 6350 HA		PLATEX		
<p>SLOTTING </p> <p>SIDE MILLING </p> <p>RAMPING </p> <p>PLUNGING </p> <p>HELICAL INT. </p>										
<p>P M K N S H C</p>										

CODE	Price List	HT *	DV f8 mm	APMXS mm	DN mm	LH mm	OAL mm	DMM h5 mm	CHW mm	ZFP
A4U4003	38,45	23,00	3	8	-	-	57	6	0,1	4
A4U4004	38,45	23,00	4	11	3,9	12	57	6	0,1	4
A4U4005	38,45	23,00	5	13	4,9	18	57	6	0,1	4
A4U4006	38,45	23,00	6	13	5,9	18	57	6	0,1	4
A4U4008	46,62	28,00	8	21	7,8	25	63	8	0,2	4
A4U4009	64,29	40,00	9	22	8,7	30	72	10	0,2	4
A4U4010	69,68	43,00	10	22	9,7	30	72	10	0,2	4
A4U4012	96,34	59,00	12	26	11,7	36	83	12	0,3	4
A4U4014	125,09	77,00	14	26	13,7	36	83	14	0,3	4
A4U4016	181,42	112,00	16	36	15,5	42	92	16	0,3	4
A4U4020	262,57	162,00	20	41	19,5	52	103	20	0,3	4

* The cutters are also available with Weldon shank for the same price

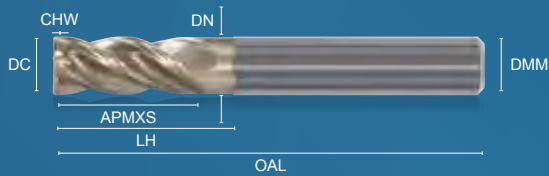
FOLLOW THE NEW PROGRAM KERFOLG UNIVERSAL



KERFOLG

END MILLS WITH VARIABLE PITCHZ4

NEW



TOOL TYPE	TOOL DESIGN	INDEX	ANGLES	ZFP	DIRECTIONS	SHANK	CORNER	COATING	STANDARD
N	HPC	≠	As=37°/28° γs=12°			DIN 6535 HB DIN 6535 HA		PLATEX	
<p>SLOTING </p> <p>SIDE MILLING </p> <p>RAMPING </p> <p>PLUNGING </p> <p>HELICAL INT. </p>									
<p>P M K N S H C</p>									

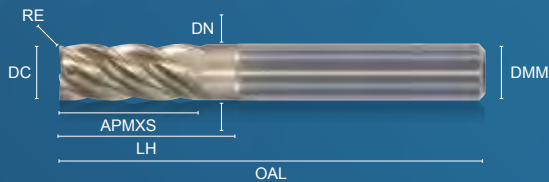
Strongly recommended for ramping, plunging and drilling

CODE	Price List	HT *	DC f8 mm	APMXS mm	DN mm	LH mm	OAL mm	DMM h5 mm	CHW mm	ZFP
A4U4704	52,86	32,00	4	11	3,9	12	57	6	0,1	4
A4U4705	53,03	32,00	5	13	4,9	18	57	6	0,1	4
A4U4706	55,27	34,00	6	13	5,9	18	57	6	0,1	4
A4U4708	66,72	41,00	8	21	7,8	25	63	8	0,2	4
A4U4710	89,19	55,00	10	22	9,7	30	72	10	0,2	4
A4U4712	114,54	70,00	12	26	11,7	36	83	12	0,3	4
A4U4714	137,14	85,00	14	26	13,7	36	83	14	0,3	4
A4U4716	200,00	124,00	16	36	15,5	42	92	16	0,3	4
A4U4720	316,00	195,00	20	41	19,5	52	103	20	0,3	4

KERFOLG

END MILLS WITH VARIABLE PITCH Z5

NEW



TOOL TYPE	TOOL DESIGN	TOOL DESIGN	INDEX	ANGLES	ZFP	DIRECTIONS	SHANK	CORNER	COATING	STANDARD
N	HPC	MTC	≠	As=35°/28° γs=12°			DIN 6535 HB DIN 6535 HA		PLATEX	
<p>SLOTING </p> <p>SIDE MILLING </p> <p>RAMPING </p> <p>PLUNGING </p> <p>HELICAL INT. </p>										
<p>P M K N S H C</p>										

CODE	Price List	HT *	DC f8 mm	APMXS mm	DN mm	LH mm	OAL mm	DMM h5 mm	RE mm	ZFP
A4U5706	47,29	30,00	6	13	5,9	18	57	6	0,1	5
A4U5708	64,54	42,00	8	21	7,8	25	64	8	0,2	5
A4U5710	86,57	53,00	10	22	9,7	30	72	10	0,2	5
A4U5712	105,36	65,00	12	26	11,7	36	83	12	0,5	5
A4U5716	233,56	144,00	16	36	15,5	42	92	16	0,5	5
A4U5720	334,87	225,00	20	41	19,5	52	104	20	0,5	5

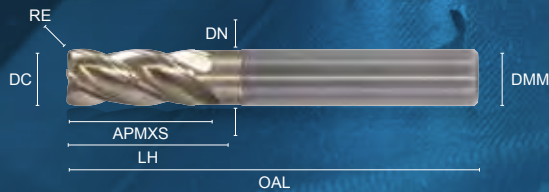
* Allo stesso prezzo le frese sono disponibili anche con gambo Weldon

FOLLOW THE NEW PROGRAM KERFOLG UNIVERSAL

KERFOLG

CORNER RADIUS END MILLS WITH VARIABLE PITCH Z4

NEW

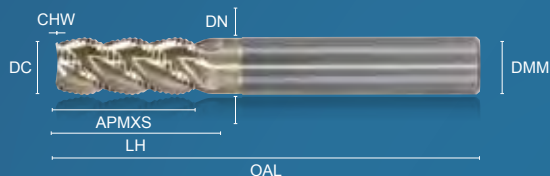


TOOL TYPE	TOOL DESIGN	INDEX	ANGLES	ZEFP	DIRECTIONS	SHANK	CORNER	COATING	STANDARD	
N	HPC	≠	λs= 35°/28° γs= 13°			DIN 6355 HB DIN 6355 HA		PLATEX		

CODE	Price List	HT *	DC f8 mm	RE mm	APMXS mm	DN mm	LH mm	OAL mm	DMM h5 mm	ZEFP
A4U110402	66,50	41,00	4	0,2	11	3,9	13	57	6	4
A4U110405	66,50	41,00	4	0,5	11	3,9	13	57	6	4
A4U110502	68,50	42,00	5	0,2	13	4,9	18	57	6	4
A4U110505	68,50	42,00	5	0,5	13	4,9	18	57	6	4
A4U110602	70,16	43,00	6	0,2	13	5,9	18	57	6	4
A4U110605	70,16	43,00	6	0,5	13	5,9	18	57	6	4
A4U110610	70,16	43,00	6	1,0	13	5,9	18	57	6	4
A4U110805	79,26	49,00	8	0,5	21	7,8	25	63	8	4
A4U110810	79,26	49,00	8	1,0	21	7,8	25	63	8	4
A4U111005	97,89	60,00	10	0,5	22	9,7	30	72	10	4
A4U111010	97,89	60,00	10	1,0	22	9,7	30	72	10	4
A4U111020	97,89	60,00	10	2,0	22	9,7	30	72	10	4
A4U111205	140,22	87,00	12	0,5	26	11,7	36	83	12	4
A4U111210	140,22	87,00	12	1,0	26	11,7	36	83	12	4
A4U111220	140,22	87,00	12	2,0	26	11,7	36	83	12	4
A4U111605	215,24	133,00	16	0,5	36	15,5	42	92	16	4
A4U111610	215,24	133,00	16	1,0	36	15,5	42	92	16	4
A4U111620	215,24	133,00	16	2,0	36	15,5	42	92	16	4

* The cutters are also available with Weldon shank for the same price

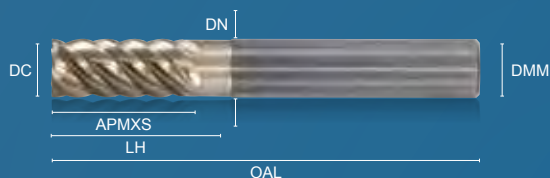
ROUGHING END MILLS Z4 VARIABLE HELIX



TOOL TYPE	TOOL DESIGN	TOOL DESIGN	INDEX	ANGLES	ZFP	CHIPBREAKER	DIRECTIONS	SHANK	CORNER	COATING	STANDARD
N	HPC	MTC	≠	λs=44°λs5° γs=8°		NR		DN 6535 RB DN 6535 HA		PLATEX	
<div style="display: flex; justify-content: space-around;"> SLOTTING SIDE MILLING RAMPING PLUNGING HELICAL INT. </div> <div style="display: flex; justify-content: space-around; margin-top: 5px;"> P M K N S H C </div>											

CODE	Price List	HT *	DC f8 mm	APMXS mm	DN mm	LH mm	OAL mm	DMM h5 mm	CHW mm	ZEFP
A4U1206	72,49	44,00	6	13	5,9	20	57	6	0,1	4
A4U1208	92,05	57,00	8	21	7,8	26	63	8	0,2	4
A4U1210	113,26	70,00	10	23	9,7	31	72	10	0,2	4
A4U1212	145,00	89,00	12	26	11,7	37	83	12	0,3	4
A4U1216	223,64	138,00	16	32	15,5	42	92	16	0,3	4
A4U1220	364,00	225,00	20	38	19,5	53	104	20	0,3	4

SUPER FINISHING END MILLS WITH CENTRE CUTTING Z6 WITH VARIABLE PITCH

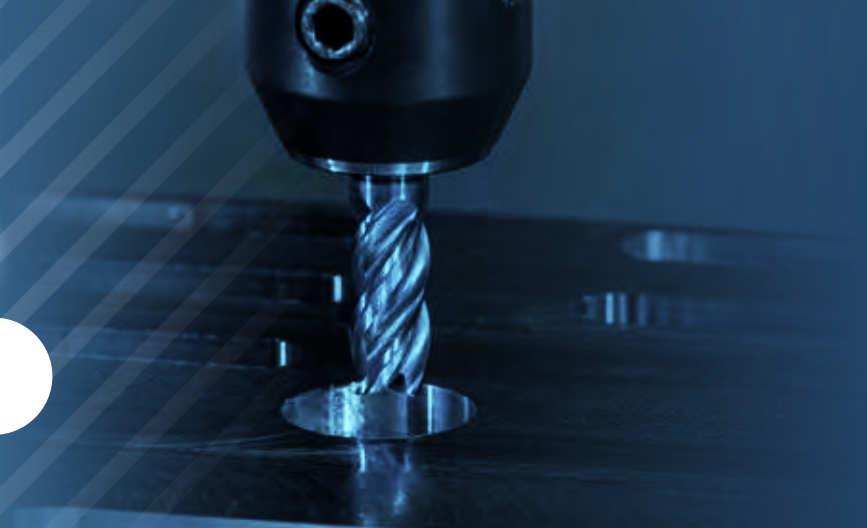


TOOL TYPE	TOOL DESIGN	TOOL DESIGN	INDEX	ANGLES	ZFP	DIRECTIONS	SHANK	CORNER	COATING	STANDARD	
N	HPC	MTC	≠	λs=44°λs8° γs=12°			DN 6535 RB DN 6535 HA		PLATEX		
<div style="display: flex; justify-content: space-around;"> SIDE MILLING RAMPING HELICAL INT. </div> <div style="display: flex; justify-content: space-around; margin-top: 5px;"> P M K N S H C </div>											

CODE	Price List	HT *	DC f8 mm	APMXS mm	DN mm	LH mm	OAL mm	DMM h5 mm	ZEFP
A4U2506	48,22	30,00	6	13	5,9	19	57	6	6
A4U2508	55,05	34,00	8	19	7,8	25	63	8	6
A4U2510	90,45	56,00	10	22	9,7	30	72	10	6
A4U2512	120,55	74,00	12	26	11,7	36	83	12	6
A4U2516	228,69	141,00	16	32	15,5	42	92	16	6
A4U2520	329,07	204,00	20	38	19,5	52	104	20	6


* The cutters are also available with Weldon shank for the same price

FOLLOW THE NEW PROGRAM KERFOLG STANDARD



KERFOLG NEW

END MILLS WITH VARIABLE PITCH Z4




TOOL TYPE	TOOL DESIGN	ANGLES	ZEPF	DIRECTIONS	SHANK	CORNER	COATING	STANDARD
N	HPC	$\lambda_s = 35^\circ/28^\circ$ $\gamma_s = 5^\circ$			DIN 6527 HB DIN 6527 HA		AlCrSiN	

P M K N S H C

CODE	Price List	HT *	DC mm	APMXS mm	DN mm	LH mm	OAL mm	DMM h6 mm	ZEPF
A4S4303	20,90	13,00	3	8	2,8	12	57	6	4
A4S4304	20,90	13,00	4	11	3,8	15	57	6	4
A4S4305	20,90	13,00	5	13	4,8	17	57	6	4
A4S4306	20,90	13,00	6	13	5,8	21	57	6	4
A4S4308	30,90	19,00	8	19	7,7	27	63	8	4
A4S4310	46,78	31,00	10	22	9,7	32	72	10	4
A4S4312	65,22	42,00	12	26	11,6	38	83	12	4
A4S4316	130,44	82,00	16	32	15,5	44	92	16	4
A4S4320	174,29	120,00	20	38	19,5	54	104	20	4

KERFOLG NEW

END MILLS WITH VARIABLE PITCH Z4




TOOL TYPE	TOOL DESIGN	ANGLES	ZEPF	DIRECTIONS	CORNER	COATING	STANDARD
N	HPC	$\lambda_s = 35^\circ/28^\circ$ $\gamma_s = 5^\circ$				AlCrSiN	

P M K N S H C

CODE	Price List	HT *	DC mm	APMXS mm	DN mm	LH mm	OAL mm	DMM h6 mm	CHW mm	ZEPF
A4S5303	21,12	13,00	3	8	2,8	12	57	6	0,15	4
A4S5304	21,12	13,00	4	11	3,8	15	57	6	0,15	4
A4S5305	21,12	13,00	5	13	4,8	17	57	6	0,15	4
A4S5306	21,12	13,00	6	13	5,8	21	57	6	0,20	4
A4S5308	31,50	19,00	8	19	7,7	27	63	8	0,20	4
A4S5310	48,96	33,00	10	22	9,7	32	72	10	0,30	4
A4S5312	65,60	42,00	12	26	11,6	38	83	12	0,30	4
A4S5316	113,44	77,00	16	32	15,5	44	92	16	0,30	4

KERFOLG NEW

CORNER RADIUS END MILLS WITH VARIABLE PITCH Z4



TOOL DESIGN	TOOL DESIGN	ANGLES	ZEPF	DIRECTIONS	SHANK	CORNER	COATING	STANDARD
HPC	HPC	$\lambda_s = 35^\circ/28^\circ$ $\gamma_s = 5^\circ$			DIN 6527 HB DIN 6527 HA		AlCrSiN	

P M K N S H C

CODE	Price List	HT *	DC mm	APMXS mm	DN mm	LH mm	OAL mm	DMM h6 mm	RE mm	ZEPF
A4S160403	29,77	18,00	4	11	3,8	15	57	6	0,3	4
A4S160405	28,90	17,00	4	11	3,8	15	57	6	0,5	4
A4S160503	29,77	18,00	5	13	4,8	17	57	6	0,3	4
A4S160505	29,77	18,00	5	13	4,8	17	57	6	0,5	4
A4S160605	28,90	17,00	6	13	5,8	21	57	6	0,5	4
A4S160610	28,90	17,00	6	13	5,8	21	57	6	1	4
A4S160805	38,38	23,00	8	19	7,7	27	63	8	0,5	4
A4S160810	38,78	24,00	8	19	7,7	27	63	8	1	4
A4S161005	65,90	36,00	10	22	9,7	32	72	10	0,5	4
A4S161010	65,90	36,00	10	22	9,7	32	72	10	1	4
A4S161020	67,37	37,00	10	22	9,7	32	72	10	2	4
A4S161205	68,30	42,00	12	26	11,6	38	83	12	0,5	4
A4S161210	68,30	42,00	12	26	11,6	38	83	12	1	4
A4S161220	70,35	44,00	12	26	11,6	38	83	12	2	4

* The cutters are also available with Weldon shank for the same price

FOLLOW THE NEW PROGRAM KERFOLG STANDARD

KERFOLG

CHAMFER END MILLS Z4 - 90°



TOOL TYPE N	ANGLES A _s = 0° γ _s = 0°	ZEPF 	DIRECTIONS 	SHANK DIN 6355 HB DIN 6355 HA	COATING TiAlN	STANDARD 
-----------------------	--	---	---	-------------------------------------	-------------------------	---



CODE	Price List	HT *	DC mm	α°	OAL mm	DMM h6 mm	ZEPF
A4S2606	33,84	21,00	6	90	60	6	4
A4S2608	54,52	32,00	8	90	70	8	4
A4S2610	69,96	43,00	10	90	75	10	4
A4S2612	88,93	55,00	12	90	75	12	4
A4S2616	152,44	94,00	16	90	80	16	4

KERFOLG

CHAMFER END MILLS Z4 - 120°



TOOL TYPE N	ANGLES A _s = 0° γ _s = 0°	ZEPF 	DIRECTIONS 	SHANK DIN 6355 HB DIN 6355 HA	COATING TiAlN	STANDARD 
-----------------------	--	---	---	-------------------------------------	-------------------------	---



CODE	Price List	HT *	DC mm	α°	OAL mm	DMM h6 mm	ZEPF
A4S2704	22,50	13,00	4	120	50	4	4
A4S2706	36,09	21,00	6	120	50	6	4
A4S2708	54,04	33,00	8	120	60	8	4
A4S2710	69,20	42,00	10	120	75	10	4
A4S2712	92,18	57,00	12	120	75	12	4
A4S2716	146,40	90,00	16	120	100	16	4

KERFOLG

END MILLS LONG SERIES Z4



TOOL TYPE N	ANGLES A _s = 30° γ _s = 9°	ZEPF 	DIRECTIONS 	SHANK DIN 6355 HB DIN 6355 HA	CORNER 	COATING TiAlN	LONG 
-----------------------	---	---	---	-------------------------------------	---	-------------------------	---



CODE	Price List	HT *	DC h10 mm	APMXS mm	OAL mm	DMM h6 mm	ZEPF
A4S4804060	35,53	22,00	4	20	60	4	4
A4S4805060	40,70	25,00	5	20	60	5	4
A4S4806065	43,45	27,00	6	24	65	6	4
A4S4808080	63,94	40,00	8	32	80	8	4
A4S4810080	84,54	50,00	10	32	80	10	4
A4S4812100	124,99	75,00	12	50	100	12	4
A4S4816120	244,53	131,00	16	60	120	16	4
A4S4820130	336,74	208,00	20	60	130	20	4

* The cutters are also available with Weldon shank for the same price

KERFOLG HD

DRILLS REINFORCED SHANK 3XD - COOLANT HOLES



SPECS



MATERIALS

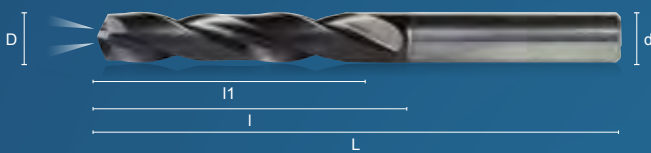
CODE	Price List	HT	D mm	d mm	l mm	L mm	I1 mm
A00203	55,79	35,00	3,00	6	20	62	14
A00203,1	56,79	35,00	3,10	6	20	62	14
A00203,2	56,79	35,00	3,20	6	20	62	14
A00203,3	56,79	35,00	3,30	6	20	62	14
A00203,4	56,79	35,00	3,40	6	20	62	14
A00203,5	56,79	35,00	3,50	6	20	62	14
A00203,7	56,79	35,00	3,70	6	20	62	14
A00203,8	56,79	35,00	3,80	6	24	66	17
A00203,9	56,79	35,00	3,90	6	24	66	17
A00204	58,13	37,00	4,00	6	24	66	17
A00204,1	60,07	37,00	4,10	6	24	66	17
A00204,2	58,13	37,00	4,20	6	24	66	17
A00204,3	60,07	37,00	4,30	6	24	66	17
A00204,4	60,07	37,00	4,40	6	24	66	17
A00204,5	58,13	37,00	4,50	6	24	66	17
A00204,6	60,07	37,00	4,60	6	24	66	17
A00204,7	60,07	37,00	4,70	6	24	66	17
A00204,8	58,13	37,00	4,80	6	24	66	20
A00204,9	60,07	37,00	4,90	6	24	66	20
A00205	58,13	37,00	5,00	6	28	66	20
A00205,1	58,13	37,00	5,10	6	28	66	20
A00205,2	58,13	37,00	5,20	6	28	66	20
A00205,3	58,13	37,00	5,30	6	28	66	20
A00205,5	58,13	37,00	5,50	6	28	66	20
A00205,6	60,07	37,00	5,60	6	28	66	20
A00205,7	86,36	53,00	5,70	6	28	66	20
A00205,8	60,07	37,00	5,80	6	28	66	20

CODE	Price List	HT	D mm	d mm	l mm	L mm	I1 mm
A00205,9	60,07	37,00	5,90	6	28	66	20
A00206	58,13	37,00	6,00	6	28	66	20
A00206,1	79,07	50,00	6,10	8	34	79	24
A00206,2	79,07	50,00	6,20	8	34	79	24
A00206,3	79,07	50,00	6,30	8	34	79	24
A00206,4	79,07	50,00	6,40	8	34	79	24
A00206,5	79,07	50,00	6,50	8	34	79	24
A00206,8	79,07	50,00	6,80	8	34	79	24
A00206,9	79,07	50,00	6,90	8	34	79	24
A00207	79,07	50,00	7,00	8	34	79	24
A00207,1	79,07	50,00	7,10	8	34	79	29
A00207,2	79,07	50,00	7,20	8	34	79	29
A00207,3	447,2	75,00	7,30	8	34	79	29
A00207,4	79,07	50,00	7,40	8	41	79	29
A00207,5	79,07	50,00	7,50	8	41	79	29
A00207,7	79,07	50,00	7,70	8	41	79	29
A00207,8	79,07	50,00	7,80	8	41	79	29
A00207,9	79,07	50,00	7,90	8	41	79	29
A00208	79,07	50,00	8,00	8	41	79	29
A00208,1	89,45	56,00	8,10	10	47	89	35
A00208,2	89,45	56,00	8,20	10	47	89	35
A00208,3	89,45	56,00	8,30	10	47	89	35
A00208,4	89,45	56,00	8,40	10	47	89	35
A00208,5	89,45	56,00	8,50	10	47	89	35
A00208,6	89,45	56,00	8,60	10	47	89	35
A00208,7	89,45	56,00	8,70	10	47	89	35
A00208,8	89,45	56,00	8,80	10	47	89	35

CODE	Price List	HT	D mm	d mm	l mm	L mm	I1 mm
A00209	89,15	56,00	9,00	10	47	89	35
A00209,2	87,42	55,00	9,20	10	47	89	35
A00209,3	89,15	56,00	9,30	10	47	89	35
A00209,5	89,15	56,00	9,50	10	47	89	35
A00209,7	432,58	84,00	9,70	10	47	89	35
A00209,8	89,15	56,00	9,80	10	47	89	35
A002010	89,15	56,00	10,00	10	47	89	35
A002010,2	427,34	79,00	10,20	12	55	102	40
A002010,5	427,34	79,00	10,50	12	55	102	40
A002010,8	427,34	79,00	10,80	12	55	102	40
A002011	427,34	79,00	11,00	12	55	102	40
A002011,2	427,34	79,00	11,20	12	55	102	40
A002011,5	427,34	79,00	11,50	12	55	102	40
A002011,8	427,34	79,00	11,80	12	55	102	40
A002012	427,34	79,00	12,00	12	55	102	40
A002012,2	266,16	168,00	12,20	14	60	107	43
A002012,5	466,17	110,00	12,50	14	60	107	43
A002012,8	466,17	110,00	12,80	14	60	107	43
A002013	466,17	110,00	13,00	14	60	107	43
A002013,5	466,17	110,00	13,50	14	60	107	43
A002013,8	466,17	110,00	13,80	14	60	107	43
A002014	466,17	110,00	14,00	14	60	107	43
A002014,5	487,34	130,00	14,50	14	60	107	43
A002015	487,34	130,00	15,00	16	65	115	45
A002015,5	487,34	130,00	15,50	16	65	115	45
A002016	487,34	130,00	16,00	16	65	115	45

KERFOLG HD

DRILLS REINFORCED SHANK 5XD - COOLANT HOLES



SPECS



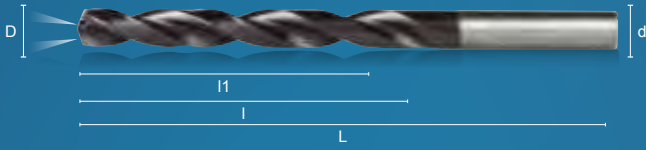
MATERIALS

CODE	Price List	HT	D mm	d mm	l mm	L mm	I1 mm
A00401	64,79	41,00	1,00	4	7	45	6
A00401,1	64,79	41,00	1,10	4	7,5	45	6
A00401,2	64,79	41,00	1,20	4	8,5	45	7
A00401,3	64,79	41,00	1,30	4	9	45	7
A00401,4	64,79	41,00	1,40	4	10	45	8
A00401,5	64,79	41,00	1,50	4	10,5	50	8
A00401,6	64,79	41,00	1,60	4	11	50	9
A00401,7	64,79	41,00	1,70	4	12	50	9
A00401,8	64,79	41,00	1,80	4	12,5	50	10
A00401,85	99,79	57,00	1,85	4	12,5	50	10
A00401,9	64,79	41,00	1,90	4	13,5	50	10
A00402	64,79	41,00	2,00	4	14	55	11
A00402,1	64,79	41,00	2,10	4	14,5	55	12
A00402,2	64,79	41,00	2,20	4	15,5	55	12
A00402,3	64,79	41,00	2,30	4	16	55	13
A00402,4	64,79	41,00	2,40	4	17	55	13
A00402,5	64,79	41,00	2,50	4	17,5	55	14
A00402,6	64,79	41,00	2,60	4	18	55	14
A00402,7	64,79	41,00	2,70	4	19	55	15
A00402,8	64,79	41,00	2,80	4	19,5	55	15
A00402,9	64,79	41,00	2,90	4	20,5	55	16
A00403	74,66	47,00	3,00	6	28	66	23
A00403,1	74,66	47,00	3,10	6	28	66	23
A00403,2	74,66	47,00	3,20	6	28	66	23
A00403,3	74,66	47,00	3,30	6	28	66	23
A00403,4	74,66	47,00	3,40	6	28	66	23
A00403,5	74,66	47,00	3,50	6	28	66	23
A00403,6	74,66	47,00	3,60	6	28	66	23
A00403,7	74,66	47,00	3,70	6	28	66	23
A00403,8	74,66	47,00	3,80	6	28	74	29
A00403,9	74,66	47,00	3,90	6	36	74	29
A00404	89,33	50,00	4,00	6	36	74	29
A00404,1	89,33	50,00	4,10	6	36	74	29
A00404,2	89,33	50,00	4,20	6	36	74	29
A00404,3	89,33	50,00	4,30	6	36	74	29
A00404,4	89,33	50,00	4,40	6	36	74	29
A00404,5	89,33	50,00	4,50	6	36	74	29
A00404,6	89,33	50,00	4,60	6	36	74	29
A00404,7	89,33	50,00	4,70	6	36	74	29
A00404,8	89,33	50,00	4,80	6	44	82	35
A00404,9	89,33	50,00	4,90	6	44	82	35
A00405	89,33	50,00	5,00	6	44	82	35

CODE	Price List	HT	D mm	d mm	l mm	L mm	I1 mm
A00405,1	89,33	50,00	5,10	6	44	82	35
A00405,2	89,33	50,00	5,20	6	44	82	35
A00405,3	89,33	50,00	5,30	6	44	82	35
A00405,4	89,33	50,00	5,40	6	44	82	35
A00405,5	89,33	50,00	5,50	6	44	82	35
A00405,6	89,33	50,00	5,60	6	44	82	35
A00405,7	89,33	50,00	5,70	6	44	82	35
A00405,8	89,33	50,00	5,80	6	44	82	35
A00405,9	89,33	50,00	5,90	6	44	82	35
A00406	89,33	50,00	6,00	6	53	82	35
A00406,1	89,33	55,00	6,10	8	53	82	43
A00406,2	89,33	55,00	6,20	8	53	82	43
A00406,3	89,33	55,00	6,30	8	53	82	43
A00406,4	89,33	55,00	6,40	8	53	82	43
A00406,5	89,33	55,00	6,50	8	53	91	43
A00406,6	89,33	55,00	6,60	8	53	91	43
A00406,7	89,33	55,00	6,70	8	53	91	43
A00406,8	89,33	55,00	6,80	8	53	91	43
A00406,9	89,33	55,00	6,90	8	53	91	43
A00407	89,33	55,00	7,00	8	53	91	43
A00407,1	89,33	55,00	7,10	8	53	91	43
A00407,2	89,33	55,00	7,20	8	53	91	43
A00407,3	89,33	55,00	7,30	8	53	91	43
A00407,4	89,33	55,00	7,40	8	53	91	43
A00407,5	89,33	55,00	7,50	8	53	91	43
A00407,6	89,33	55,00	7,60	8	53	91	43
A00407,7	89,33	55,00	7,70	8	53	91	43
A00407,8	89,33	55,00	7,80	8	53	91	43
A00407,9	89,33	55,00	7,90	8	53	91	43
A00408	89,33	55,00	8,00	8	53	91	43
A00408,1	492,25	64,00	8,10	10	61	91	49
A00408,2	492,25	64,00	8,20	10	61	91	49
A00408,3	492,25	64,00	8,30	10	61	91	49
A00408,4	492,25	64,00					

KERFOLG HD

DRILLS REINFORCED SHANK 7XD - COOLANT HOLES



SPESCS



MATERIALS



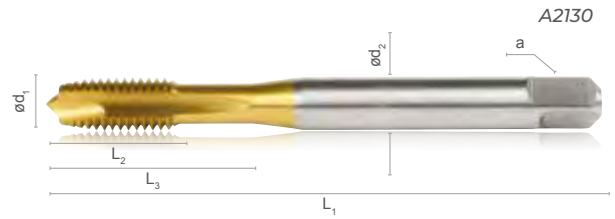
CODE	Price List	HT	D mm	d mm	l mm	L mm	l1 mm
A00504	138,00	88,00	4,00	6	43	81	36
A00504,1	138,00	88,00	4,10	6	43	81	36
A00504,2	138,00	88,00	4,20	6	43	81	36
A00504,3	138,00	88,00	4,30	6	43	81	36
A00504,5	138,00	88,00	4,50	6	43	81	36
A00504,6	138,00	88,00	4,60	6	43	81	36
A00504,7	138,00	88,00	4,70	6	43	81	36
A00504,8	138,00	88,00	4,80	6	57	95	48
A00504,9	138,00	88,00	4,90	6	57	95	48
A00505	138,00	88,00	5,00	6	57	95	48
A00505,1	138,00	88,00	5,10	6	57	95	48
A00505,2	138,00	88,00	5,20	6	57	95	48
A00505,3	138,00	88,00	5,30	6	57	95	48
A00505,5	138,00	88,00	5,50	6	57	95	48
A00505,8	138,00	88,00	5,80	6	57	95	48
A00505,9	138,00	88,00	5,90	6	57	95	48
A00506	138,00	88,00	6,00	6	57	95	48
A00506,1	171,86	110,00	6,10	8	76	114	64
A00506,2	171,86	110,00	6,20	8	76	114	64
A00506,3	171,86	110,00	6,30	8	76	114	64
A00506,5	171,86	110,00	6,50	8	76	114	64
A00506,6	171,86	110,00	6,60	8	76	114	64
A00506,7	171,86	110,00	6,70	8	76	114	64
A00506,8	171,86	110,00	6,80	8	76	114	64
A00507	171,86	110,00	7,00	8	76	114	64
A00507,4	171,86	110,00	7,40	8	76	114	64
A00507,5	171,86	110,00	7,50	8	76	114	64
A00507,7	171,86	110,00	7,70	8	76	114	64
A00507,8	171,86	110,00	7,80	8	76	114	64
A00508	171,86	110,00	8,00	8	76	114	64
A00508,5	240,74	135,00	8,50	10	95	142	80
A00509	240,74	135,00	9,00	10	95	142	80
A00509,1	240,74	135,00	9,10	10	95	142	80
A00509,5	240,74	135,00	9,50	10	95	142	80
A005010	240,74	135,00	10,00	10	95	142	80
A005010,5	280,70	190,00	10,50	12	114	162	96
A005011	280,70	190,00	11,00	12	114	162	96
A005011,5	280,70	190,00	11,50	12	114	162	96
A005012	280,70	190,00	12,00	12	114	162	96
A005012,5	433,76	275,00	12,50	14	133	178	112
A005013	433,76	275,00	13,00	14	133	178	112
A005013,5	433,76	275,00	13,50	14	133	178	112
A005014	433,76	275,00	14,00	14	133	178	112
A005014,5	574,77	360,00	14,50	16	152	203	128
A005015	574,77	360,00	15,00	16	152	203	128
A005015,5	574,77	360,00	15,50	16	152	203	128
A005016	574,77	360,00	16,00	16	152	203	128


FOLLOW THE
KERFOLG 
 PROGRAM
 FOR YOUR MACHINING
 OPERATION

FOLLOW THE KERFOLG PROGRAM FOR YOUR MACHINING OPERATION

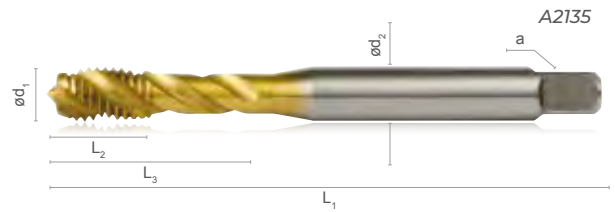
KERFOLG


TAPS STANDARD - M



DIN13	TOLERANCE	MATERIAL	SHANK	HOLE TYPE	COATING
M	ISO 2 6H	HSSE	DIN 371 DIN 376		TIN
TOOL TYPE	CHAMFER	FLUTES	GEOMETRY	DEPTH	ROTATION
Cutting	B 4/5	Straight	Spiral pointed	< 2.5xD	RH

P
M
K
N
S
H
C



DIN13	TOLERANCE	MATERIAL	SHANK	HOLE TYPE	COATING
M	ISO 2 6H	HSSE	DIN 371 DIN 376		TIN
TOOL TYPE	CHAMFER	FLUTES	GEOMETRY	DEPTH	ROTATION
Cutting	C 2/3	Helical 40°	Spiral flutes	< 2.5xD	RH

P
M
K
N
S
H
C

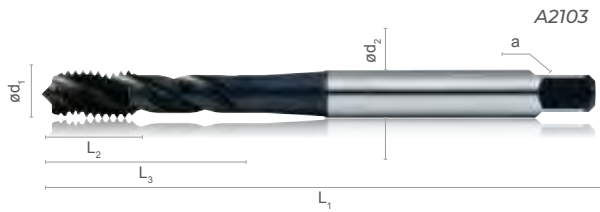
CODE	Price List	HT	d1 mm	P mm	L1 mm	L2 mm	L3 mm	d2 h9 mm	a h12 mm	Z	 mm
A2130M2	35,88	22,00	M2	0,4	45	7	11	2,8	2,1	2	1,6
A2130M2,5	34,34	19,00	M2,5	0,45	50	9	15	2,8	2,1	3	2,05
A2130M3	28,44	17,00	M3	0,5	56	10	18	3,5	2,7	3	2,5
A2130M4	28,44	17,00	M4	0,7	63	12	21	4,5	3,4	3	3,3
A2130M5	28,44	17,00	M5	0,8	70	14	24,5	6	4,9	3	4,2
A2130M6	28,44	17,00	M6	1	80	16	29	6	4,9	3	5
A2130M8	35,24	22,00	M8	1,25	90	18	33	8	6,2	3	6,8
A2130M10	44,58	25,00	M10	1,5	100	20	36	10	8	3	8,5
A2130M12	61,26	31,00	M12	1,75	110	24	-	9	7	4	10,2
A2130M14	67,07	41,00	M14	2	110	25	-	11	9	4	12
A2130M16	75,43	46,00	M16	2	110	28	-	12	9	4	14
A2130M18	93,37	57,00	M18	2,5	125	32	-	14	11	4	15,5
A2130M20	126,43	78,00	M20	2,5	140	32	-	16	12	4	17,5
A2130M22	126,68	79,00	M22	2,5	140	32	-	18	14,5	4	19,5
A2130M24	167,08	115,00	M24	3	160	36	-	18	14,5	4	21
A2130M27	226,52	140,00	M27	3	160	36	-	20	16	4	24
A2130M30	266,64	165,00	M30	3,5	180	40	-	22	20	4	26,5
A2135M2	33,10	20,00	M2	0,4	45	6	12	2,8	2,1	3	1,6
A2135M2,5	33,10	20,00	M2,5	0,45	50	6,5	15	2,8	2,1	3	2,05
A2135M3	30,64	19,00	M3	0,5	56	7	15	3,5	2,7	3	2,5
A2135M4	30,64	19,00	M4	0,7	63	8,5	21	4,5	3,4	3	3,3
A2135M5	30,64	19,00	M5	0,8	70	10	24,5	6	4,9	3	4,2
A2135M6	30,64	19,00	M6	1	80	12	29	6	4,9	3	5
A2135M8	37,44	23,00	M8	1,25	90	15	33	8	6,2	3	6,8
A2135M10	44,57	27,00	M10	1,5	100	17,5	38	10	8	3	8,5
A2135M12	56,38	34,00	M12	1,75	110	18	-	9	7	4	10,2
A2135M14	74,98	44,00	M14	2	110	20,5	-	11	9	4	12
A2135M16	84,04	50,00	M16	2	110	20,5	-	12	9	4	14
A2135M18	104,28	62,00	M18	2,5	125	25,5	-	14	11	4	15,5
A2135M20	133,93	83,00	M20	2,5	140	29,5	-	16	12	4	17,5
A2135M22	150,53	93,00	M22	2,5	140	29,5	-	18	14,5	4	19,5
A2135M24	196,78	122,00	M24	3	160	35,5	-	18	14,5	4	21
A2135M27	239,34	148,00	M27	3	160	37,5	-	20	16	4	24
A2135M30	283,36	175,00	M30	3,5	180	42	-	22	18	4	26,5

TAPS UNIVERSAL - M



DIN13	TOLERANCE	MATERIAL	SHANK	HOLE TYPE	COATING
M	ISO 2 6H	HSSE	DIN 2174 (D71-276)		NIT+VAP
TOOL TYPE	CHAMFER	FLUTES	GEOMETRY	DEPTH	ROTATION
Cutting	B 4/5	Straight	Spiral pointed	< 2xD	RH

P
M
K
N
S
H
C

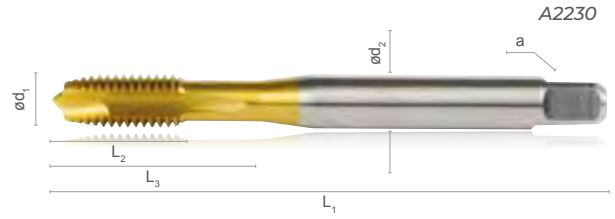


DIN13	TOLERANCE	MATERIAL	SHANK	HOLE TYPE	COATING
M	ISO 2 6H	HSSE	DIN 371 DIN 376		NIT+VAP
TOOL TYPE	CHAMFER	FLUTES	GEOMETRY	DEPTH	ROTATION
Cutting	C 2/3	Helical 40°	Spiral flutes	< 2.5xD	RH

P
M
K
N
S
H
C

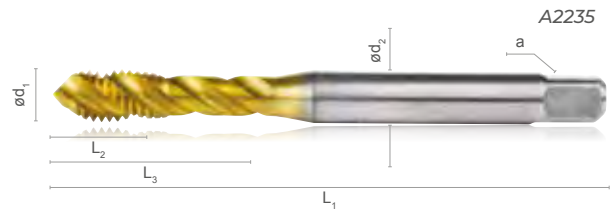
CODE	Price List	HT	d1 mm	P mm	L1 mm	L2 mm	L3 mm	d2 h9 mm	a h12 mm	Z		mm
A2102M02	34,94	22,00	M2	0,4	45	7	12	2,8	2,1	2	1,6	
A2102M02,5	33,79	21,00	M2,5	0,45	50	9	14	2,8	2,1	3	2,05	
A2102M03	25,80	16,00	M3	0,5	56	11	18	3,5	2,7	3	2,5	
A2102M04	26,19	16,00	M4	0,7	63	13	21	4,5	3,4	3	3,3	
A2102M05	26,74	17,00	M5	0,8	70	15	25	6	4,9	3	4,2	
A2102M06	26,69	17,00	M6	1	80	17	30	6	4,9	3	5	
A2102M08	30,05	18,00	M8	1,25	90	20	35	8	6,2	3	6,8	
A2102M10	36,63	23,00	M10	1,5	100	22	39	10	8	3	8,5	
A2102M12	46,56	29,00	M12	1,75	110	24	-	9	7	4	10,2	
A2102M14	74,07	44,00	M14	2	110	26	-	11	9	4	12	
A2102M16	68,48	42,00	M16	2	110	27	-	12	9	4	14	
A2102M18	145,17	71,00	M18	2,5	125	30	-	14	11	4	15,5	
A2102M20	104,33	65,00	M20	2,5	140	32	-	16	12	4	17,5	
A2102M22	173,32	107,00	M22	2,5	140	32	-	18	14,5	4	19,5	
A2102M24	143,55	89,00	M24	3	160	34	-	18	14,5	4	21	
A2102M27	197,99	122,00	M27	3	160	36	-	20	16	4	24	
A2102M30	229,57	142,00	M30	3,5	180	40	-	22	18	4	26,5	
A2103M02	34,94	22,00	M2	0,4	45	4	12	2,8	2,1	3	1,6	
A2103M02,5	36,58	22,00	M2,5	0,45	50	5	14	2,8	2,1	3	2,05	
A2103M03	26,70	16,00	M3	0,5	56	6	18	3,5	2,7	3	2,5	
A2103M04	27,73	17,00	M4	0,7	63	7	21	4,5	3,4	3	3,3	
A2103M05	28,23	17,00	M5	0,8	70	8	25	6	4,9	3	4,2	
A2103M06	29,19	18,00	M6	1	80	10	30	6	4,9	3	5	
A2103M08	34,16	21,00	M8	1,25	90	14	35	8	6,2	3	6,8	
A2103M10	44,39	26,00	M10	1,5	100	16	39	10	8	3	8,5	
A2103M12	50,93	31,00	M12	1,75	110	18	-	9	7	4	10,2	
A2103M14	77,24	48,00	M14	2	110	20	-	11	9	4	12	
A2103M16	72,64	45,00	M16	2	110	22	-	12	9	4	14	
A2103M18	125,34	77,00	M18	2,5	125	25	-	14	11	4	15,5	
A2103M20	110,92	69,00	M20	2,5	140	25	-	16	12	4	17,5	
A2103M22	173,32	107,00	M22	2,5	140	27	-	18	14,5	4	19,5	
A2103M24	148,07	92,00	M24	3	160	30	-	18	14,5	4	21	
A2103M27	207,63	128,00	M27	3	160	30	-	20	16	5	24	
A2103M30	250,24	155,00	M30	3,5	180	35	-	22	18	5	26,5	

TAPS POWER - M



DIN13	TOLERANCE	MATERIAL	SHANK	HOLE TYPE	COATING
M	ISO 2 6H	HSSE	DIN 371 DIN 376		TiN
TOOL TYPE	CHAMFER	FLUTES	GEOMETRY	DEPTH	ROTATION
Cutting	B 4/5	Straight	Spiral pointed	< 2.5xD	RH

P
M
K
N
S
H
C



DIN13	TOLERANCE	MATERIAL	SHANK	HOLE TYPE	COATING
M	ISO 2 6H	HSSE	DIN 371 DIN 376		TiN
TOOL TYPE	CHAMFER	FLUTES	GEOMETRY	DEPTH	ROTATION
Cutting	C 2/3	Helical 40°	Spiral flutes	< 2.5xD	RH

P
M
K
N
S
H
C

CODE	Price List	HT	d1 mm	P mm	L1 mm	L2 mm	L3 mm	d2 h9 mm	a h12 mm	Z		mm
A2230M2	32,32	20,00	M2	0,4	45	7	11	2,8	2,1	2	1,6	
A2230M3	31,34	19,00	M3	0,5	56	10	18	3,5	2,7	3	2,5	
A2230M4	31,34	19,00	M4	0,7	63	12	21	4,5	3,4	3	3,3	
A2230M5	31,34	19,00	M5	0,8	70	14	24,5	6	4,9	3	4,2	
A2230M6	31,34	19,00	M6	1	80	16	29	6	4,9	3	5	
A2230M8	38,33	23,00	M8	1,25	90	18	33	8	6,2	3	6,8	
A2230M10	46,02	28,00	M10	1,5	100	20	36	10	8	3	8,5	
A2230M12	67,94	35,00	M12	1,75	110	24	-	9	7	3	10,2	
A2230M14	73,04	45,00	M14	2	110	25	-	11	9	4	12	
A2230M16	85,13	52,00	M16	2	110	28	-	12	9	4	14	
A2230M20	142,63	88,00	M20	2,5	140	32	-	16	12	4	17,5	
A2235M2	37,00	22,00	M2	0,4	45	6	12	2,8	2,1	3	1,6	
A2235M2,5	37,00	22,00	M2,5	0,45	50	6,5	15	2,8	2,1	3	2,05	
A2235M3	33,42	21,00	M3	0,5	56	7	15	3,5	2,7	3	2,5	
A2235M4	33,42	21,00	M4	0,7	63	8,5	21	4,5	3,4	3	3,3	
A2235M5	33,42	21,00	M5	0,8	70	10	24,5	6	4,9	3	4,2	
A2235M6	33,42	21,00	M6	1	80	12	29	6	4,9	3	5	
A2235M8	44,23	25,00	M8	1,25	90	15	33	8	6,2	3	6,8	
A2235M10	48,92	30,00	M10	1,5	100	17,5	38	10	8	3	8,5	
A2235M12	62,62	38,00	M12	1,75	110	18	-	9	7	4	10,2	
A2235M14	80,42	50,00	M14	2	110	20,5	-	11	9	4	12	
A2235M16	91,48	56,00	M16	2	110	20,5	-	12	9	4	14	
A2235M20	154,19	93,00	M20	2,5	140	29,5	-	16	12	4	17,5	

KIT TOOLHOLDERS + TURNING POSITIVE INSERT

Buy
1 toolholders kit



HSS TOOLHOLDERS

AH 0608 H
AH 0810 J
AH 1012 K
AH 1216 M

1277885

4 x TOOLHOLDERS
AH-SCLCR HSS

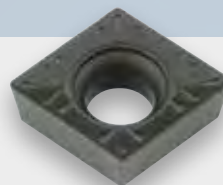
1277891

4 x TOOLHOLDERS
AH-SCLCL HSS

€ 355,00

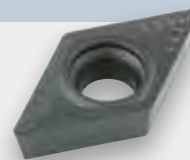
KIT R/L

50% 20 inserts



TURNING POSITIVE INSERTS SHAPE C

	Description	Grade	Code	HT	P	M	K	N	S	H
FINISHING	FFP CCMT 060204-FFP	1010	B1C54CCFFP05	7,70	●	●	●			
	CFP CCMT 060202-CFP	4125	B1C55CCCFP10	7,04	●	○				
	CFP CCMT 060204-CFP	4115	B1C55CCCFP14	7,47	●	○				
MEDIUM CUTTING	CFP CCMT 060204-CFP	4125	B1C55CCCFP11	7,04	●	○				
	CMP CCMT 060204-CMP	4115	B1C56CCMP10	7,04	●	○				
	CMP CCMT 060204-CMP	4125	B1C56CCMP11	7,04	●	○				
	CMP CCMT 060204-CMP	4135	B1C56CCMP23	7,47	●	○				
	CMP CCMT 060208-CMP	4115	B1C56CCMP18	7,47	●	○				
	CMP CCMT 060208-CMP	4125	B1C56CCMP20	7,47	●	○				
	CMP CCMT 060208-CMP	4135	B1C56CCMP24	7,47	●	○				
	SMP CCMT 060204-SMP	2125	B1C57CCSMP10	7,04	○	●				
	SMP CCMT 060208-SMP	2125	B1C57CCSMP12	7,47	○	●				



TURNING POSITIVE INSERTS SHAPE D

	Description	Grade	Code	HT	P	M	K	N	S	H
FINISHING	FFP DCMT 070204-FFP	1010	B1D55DCCFFP05	7,70	●	●	●			
	CFP DCMT 070202-CFP	4125	B1D56DCCFP10	6,91	●	○				
	CFP DCMT 070204-CFP	4115	B1D56DCCFP14	7,34	●	○				
MEDIUM CUTTING	CFP DCMT 070204-CFP	4125	B1D56DCCFP11	6,91	●	○				
	CMP DCMT 070204-CMP	4125	B1D57DCCMP10	6,91	●	○				
	CMP DCMT 070204-CMP	4135	B1D57DCCMP11	6,91	●	○				
	CMP DCMT 070208-CMP	4125	B1D57DCCMP18	7,34	●	○				
	CMP DCMT 070208-CMP	4135	B1D57DCCMP19	7,34	●	○				
	SMP DCMT 070204-SMP	2125	B1D58DCSMP10	6,91	○	●				
	SMP DCMT 070208-SMP	2125	B1D58DCSMP13	7,34	○	●				

HSS TOOLHOLDERS

AH 0810 H
AH 1012 K
AH 1216 M

982207

3 x TOOLHOLDERS
AH-SDUCR HSS

1277886

3 x TOOLHOLDERS
AH-SDUCL HSS

€ 315,00

KIT R/L



MODULAR BORING KIT WITH EASY READ DIGITAL DISPLAY Ø 9.75 - 88.1



€ 2.050,00
B9B25KIT



THE MBM55 MODULAR KIT INCLUDES

Description	KIT 521.000.088
266.550.045	MBM-55 digital micrometer head
266.028.077	Easy read digital display
272.010.006	Bore Ø 9.75 – 15.1 mm
272.015.006	Bore Ø 14.75 – 20.1 mm
272.020.006	Bore Ø 19.75 – 25.1 mm
272.025.006	Bore Ø 24.75 – 30.1 mm
271.030.048	Bore Ø 29.75 – 48.1 mm
253.030.006	Bore insert holder Ø 29.75 – 48.1 mm
271.048.088	Bore Ø 47.75 – 88.1
253.048.006	Bore insert holder Ø 47.75 – 88.1 mm
	Hexagonal wrench no. 4
	Hexagonal wrench no. 5
	Torx T7 wrench

The MBM-55 modular system must be coupled with a basic machine chuck interface attachment.

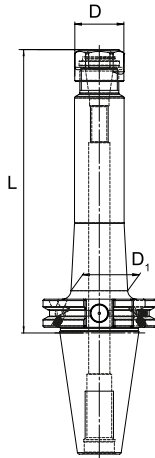
BASE COUPLINGS

CODE	HT	Description	Base coupling
B9B100555	340,00	102.050.551	DIN 69893 HSK - A50
B9B100655	312,00	102.063.551	DIN 69893 HSK - A63
B9B100855	335,00	102.080.551	DIN 69893 HSK - A80
B9B101055	338,00	102.100.551	DIN 69893 HSK - A100
B9B113255	273,00	102.315.551	DIN 69871 A/D ISO - 30
B9B150455	225,00	102.415.551	DIN 69871 A/D ISO - 40
B9B115155	265,00	102.515.551	DIN 69871 A/D ISO - 50
B9B050655	337,00	102.163.551	ISO 26623-1 PSC - 63
B9B113155	273,00	102.312.551	MAS - BT «A/D» BT - 30
B9B200455	225,00	102.412.551	MAS - BT «A/D» BT - 40
B9B125155	262,00	102.512.551	MAS - BT «A/D» BT - 50



Other base couplings are available on request.

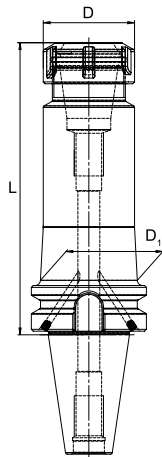
DIN69871 SK AD+B



- SK
40
- SK
50
- G 2.5
25,000
rpm
- AT3
TAPER

CODE	Price List	HT	SK	ER	D mm	D1 mm	L mm	Ring nut
C0016416063	59,50	43,00	40	16	28	-	63	ER16
C0016416100	59,00	50,00	40	16	28	-	100	ER16
C0016416130	78,00	66,00	40	16	28	-	130	ER16
C0016416160	96,50	82,00	40	16	28	32	160	ER16
C0016425060	50,50	43,00	40	25	42	-	60	ER25
C0016425100	65,50	56,00	40	25	42	-	100	ER25
C0016425130	80,50	68,00	40	25	42	-	130	ER25
C0016425160	98,50	84,00	40	25	42	46	160	ER25
C0016432070	54,00	46,00	40	32	50	-	70	ER32
C0016432100	65,50	56,00	40	32	50	-	100	ER32
C0016432130	81,50	69,00	40	32	50	-	130	ER32
C0016432160	101,50	86,00	40	32	50	-	160	ER32
C0016440080	58,00	49,00	40	40	63	-	80	ER40
C0016440100	72,50	61,00	40	40	63	-	100	ER40
C0016440130	84,50	72,00	40	40	63	-	130	ER40
C0016440160	108,00	92,00	40	40	63	-	160	ER40
C0016525060	80,50	68,00	50	25	42	-	60	ER25
C0016525100	98,50	84,00	50	25	42	-	100	ER25
C0016525160	133,00	113,00	50	25	42	-	160	ER25
C0016532070	84,00	71,00	50	32	50	-	70	ER32
C0016532100	116,50	99,00	50	32	50	-	100	ER32
C0016532160	133,00	113,00	50	32	50	-	160	ER32
C0016540080	84,50	81,00	50	40	63	-	80	ER40
C0016540100	119,50	102,00	50	40	63	-	100	ER40
C0016540160	136,00	116,00	50	40	63	-	160	ER40

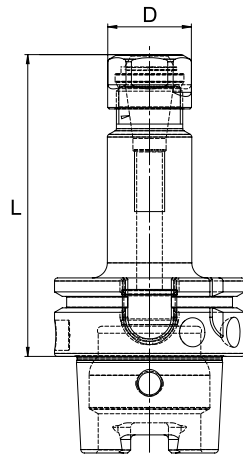
MAS 403 BT AD+B



- BT
40
- BT
50
- G 2.5
25,000
rpm
- AT3
TAPER

CODE	Price List	HT	BT	ER	D mm	D1 mm	L mm	Ring nut
C1016416063	59,50	43,00	40	16	28	-	63	ER16
C1016416100	59,00	50,00	40	16	28	-	100	ER16
C1016416130	84,00	69,00	40	16	28	-	130	ER16
C1016425060	50,50	43,00	40	25	42	-	66	ER25
C1016425100	72,00	61,00	40	25	42	-	100	ER25
C1016425130	94,00	80,00	40	25	42	-	130	ER25
C1016432070	54,00	46,00	40	32	50	-	70	ER32
C1016432100	65,50	56,00	40	32	50	-	100	ER32
C1016132130	98,00	83,00	40	32	50	-	130	ER32
C1016432160	107,00	91,00	40	32	50	53,5	160	ER32
C1016440080	68,00	49,00	40	40	63	-	80	ER40
C1016440100	72,50	62,00	40	40	63	-	100	ER40
C1016516070	87,50	74,00	50	16	28	-	70	ER16
C1016516100	107,00	91,00	50	16	28	-	100	ER16
C1016525070	87,00	74,00	50	25	42	-	70	ER25
C1016525100	108,00	92,00	50	25	42	-	100	ER25
C1016532070	98,00	76,00	50	32	50	-	70	ER32
C1016532100	125,00	106,00	50	32	50	-	100	ER32

DIN 69893 HSK A



- HSK
63
- HSK
100
- G 2.5
25,000
rpm

CODE	Price List	HT	HSK	ER	D mm	L mm	Ring nut
C2016616100	92,00	78,00	63	16	28	100	GER16
C2016625100	89,00	76,00	63	25	42	100	GER25
C2016632100	92,00	78,00	63	32	50	100	GER32
C2016632160	122,00	104,00	63	32	50	160	GER32
C2016125100	124,00	106,00	100	25	42	100	GER25
C2016132100	124,00	106,00	100	32	50	100	GER32
C2016140120	129,00	110,00	100	40	63	120	GER40

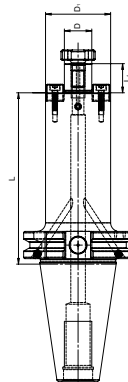
CODE	Price List	HT	SK	D mm	L mm	L1 mm	D1 mm
C0084416035	54,50	46,00	40	16	35	17	38
C0084416100	63,00	53,00	40	16	100	17	38
C0084422035	54,50	46,00	40	22	35	19	48
C0084422100	66,00	56,00	40	22	100	19	48
C0084427045	55,50	47,00	40	27	45	21	60
C0084427100	67,50	57,00	40	27	100	21	60
C0084432050	59,50	50,00	40	32	50	24	78
C0084432100	74,00	60,00	40	32	100	24	78
C0084440050	72,00	61,00	40	40	50	27	88
C0085516035	85,50	73,00	50	16	35	17	38
C0085516100	92,00	78,00	50	16	100	17	38
C0085522035	72,50	62,00	50	22	35	19	48
C0085522100	88,50	75,00	50	22	100	19	48
C0085527040	72,50	62,00	50	27	40	21	60
C0085527100	88,50	75,00	50	27	100	21	60
C0085532050	76,50	65,00	50	32	50	24	78
C0085532100	94,00	80,00	50	32	100	24	78
C0085540050	88,50	75,00	50	40	50	27	88
C0085540100	103,50	88,00	50	40	100	27	88

SK
40

SK
50

G 2.5
25.000
rpm

AT3
TAPER



DIN 69871 SK AD+B

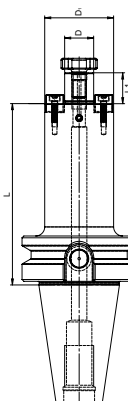
CODE	Price List	HT	BT	D mm	L mm	L1 mm	D1 mm
C1083416040	48,50	41,00	40	16	40	17	38
C1083416100	54,50	44,00	40	16	100	17	38
C1083422040	49,00	41,00	40	22	40	19	48
C1083422100	54,00	43,00	40	22	100	19	48
C1083427040	49,00	41,00	40	27	40	21	60
C1083427100	54,50	46,00	40	27	100	21	60
C1083432050	52,00	44,00	40	32	50	24	78
C1083432100	63,00	53,00	40	32	100	24	78
C1083440050	63,50	54,00	40	40	50	27	88
C1084516100	80,00	68,00	50	16	100	17	38
C1084522055	70,00	59,00	50	22	55	19	48
C1084527055	70,00	59,00	50	27	55	21	60
C1084532055	74,50	63,00	50	32	55	24	78
C1084540055	85,50	73,00	50	40	55	27	88

BT
40

BT
50

G 2.5
25.000
rpm

AT3
TAPER

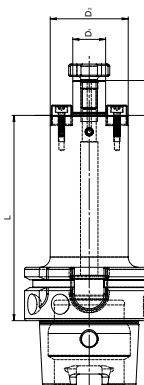


MAS 403 BT AD

CODE	Price List	HT	HSK	D1 mm	L mm	L1 mm	D2 mm
C2082616050	447,50	100,00	63	16	50	17	38
C2082616100	439,50	119,00	63	16	100	17	38
C2082622050	447,50	100,00	63	22	50	19	48
C2082622100	439,50	119,00	63	22	100	19	48
C2082627060	426,50	108,00	63	27	60	21	60
C2082627100	448,50	126,00	63	27	100	21	60
C2082632060	430,50	111,00	63	32	60	24	78
C2082632100	453,50	131,00	63	32	100	24	78
C2082640060	446,50	125,00	63	40	60	27	88
C2082640100	452,50	130,00	63	40	100	27	88

HSK
63

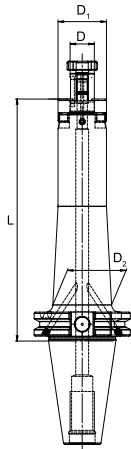
G 2.5
25.000
rpm



DIN 69893 HSK A

COMBI-DRIVE SHELL MILL HOLDER CHUCKS

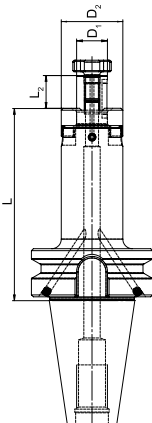
DIN69871 SK AD+B



- SK
40
- SK
50
- G 2.5
25.000
rpm
- AT3
TAPER

CODE	Price List	HT	SK	D mm	L mm	L1 mm	D1 mm	D2 mm
C0096416055	57,00	48,00	40	16	55	17	32	-
C0096416100	72,00	61,00	40	16	100	17	32	-
C0096416160	116,50	99,00	40	16	160	17	32	39
C0096422055	59,50	50,00	40	22	55	19	40	-
C0096422100	79,00	62,00	40	22	100	19	40	-
C0096422160	122,50	104,00	40	22	160	19	40	46,5
C0096427055	59,50	50,00	40	27	55	21	48	-
C0096427100	74,00	63,00	40	27	100	21	48	-
C0096427160	128,00	109,00	40	27	160	21	48	-
C0096432060	65,00	55,00	40	32	60	24	58	-
C0096432160	134,50	115,00	40	32	160	24	58	-
C0096516055	80,00	68,00	50	16	55	17	32	-
C0096516100	99,00	79,00	50	16	100	17	32	-
C0096516160	148,50	126,00	50	16	160	17	32	39
C0096522055	80,00	68,00	50	22	55	19	40	-
C0096522100	93,00	78,00	50	22	100	19	40	-
C0096522160	152,00	130,00	50	22	160	19	40	47
C0096527055	81,00	69,00	50	27	55	21	48	-
C0096527100	94,00	80,00	50	27	100	21	48	-
C0096527160	157,50	134,00	50	27	160	21	48	55
C0096532055	89,50	71,00	50	32	55	24	58	-
C0096532100	95,00	81,00	50	32	100	24	58	-
C0096532160	168,00	143,00	50	32	160	24	58	65,5
C0096540055	92,00	78,00	50	40	55	27	70	-
C0096540100	105,00	89,00	50	40	100	27	70	-
C0096540160	182,50	156,00	50	40	160	27	70	-

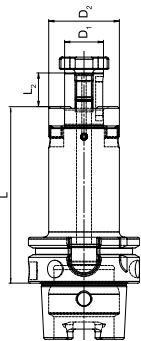
MAS 403 BT AD+B



- BT
40
- BT
50
- G 2.5
25.000
rpm
- AT3
TAPER

CODE	Price List	HT	BT	D1 mm	L mm	L1 mm	D2 mm
C1096416055	57,00	48,00	40	16	55	17	32
C1096416100	72,00	61,00	40	16	100	17	32
C1096422055	59,50	50,00	40	22	55	19	40
C1096422100	79,00	62,00	40	22	100	19	40
C1096427055	59,50	50,00	40	27	55	21	48
C1096427100	74,00	63,00	40	27	100	21	48
C1096432060	65,00	55,00	40	32	60	24	58
C1096432160	78,50	67,00	40	32	100	24	58
C1096440060	73,00	62,00	40	40	60	27	70
C1096516070	86,00	73,00	50	16	70	17	32
C1096522070	86,00	73,00	50	22	70	19	40
C1096527070	88,50	75,00	50	27	70	21	48
C1096532070	90,50	77,00	50	32	70	24	58
C1096540070	99,50	85,00	50	40	70	27	70

DIN 69893 HSK A



- HSK
63
- HSK
100
- G 2.5
25.000
rpm

CODE	Price List	HT	HSK	D1 mm	L mm	L1 mm	D2 mm
C2096616060	106,00	90,00	63	16	60	17	32
C2096616100	145,50	98,00	63	16	100	17	32
C2096622060	106,00	90,00	63	22	60	19	40
C2096622100	115,50	98,00	63	22	100	19	40
C2096627060	145,50	98,00	63	27	60	21	48
C2096627100	124,00	106,00	63	27	100	21	48
C2096632060	149,50	102,00	63	32	60	24	58
C2096632100	128,50	109,00	63	32	100	24	58
C2096116060	140,50	120,00	100	16	60	17	32
C2096122060	140,50	120,00	100	22	60	19	40
C2096127060	146,50	125,00	100	27	60	21	48
C2096132060	157,50	134,00	100	32	60	24	58
C2096140070	163,00	139,00	100	40	70	27	70

TOOL CLAMP

Our cone disassemblers supports are manufactured with the utmost care to preserve the optimal conditions of your toolholders.

The characteristics of the supports avoids possible contact between the cone and support thanks to the shape and the presence of an O-ring.

Keep clean all surfaces to always ensure maximum performance.

The good condition of the cone will always ensure exact setting and precise machining.



Rotation - positioning

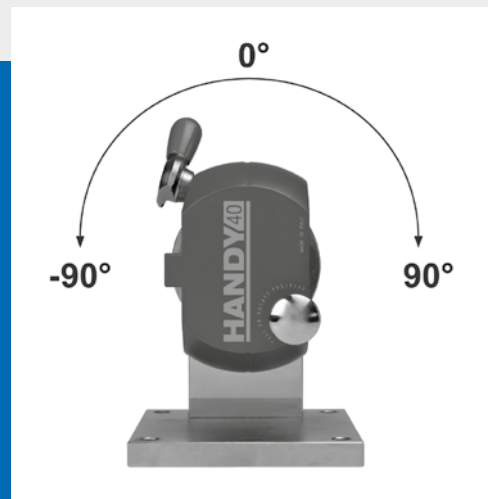
1. Pull the indexing knob to unlock
2. Turn into a new position at 0° 90°
3. Release the knob to block

Toolholders blocking

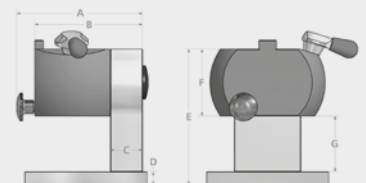
1. Insert holder making sure the cone is perfectly clean
2. Check the correct positioning into centering dowel
3. Rotate locking knob toward SK or BT according to cone version

Toolholders extraction

1. Rotate locking knob to central positioning
2. Extract holder



CODE	Price List	HT	Coupling	A mm	B mm	C mm	D mm	E mm	F mm	G mm	Base mm	Weight kg
C4525SK40	374,00	245,00	SK40 - BT40	121	97	29	12	122	60	50	110 x 110	5,0
C4525SK50	435,4	289,00	SK50 - BT50	152	128	29	12	172	89	71	130 x 130	12,5
C4525HSK63	440,30	292,00	HSK63	124	101	29	12	122	60	50	110 x 110	5,2



KERFOLG Eye Trim 2

PRESETTING EYE TRIM II

Natural granite

NO thermal expansion coefficients



AXES POSITIONING SYSTEM

The NEW axes positioning system helps you to frame the cutting edge to be measured in the center of the screen quickly and easily.

NEW TFT COLOUR LCD

The NEW TFT colour LCD 7" LED display makes the presetting experience simple and complete

NEW FIRMWARE

for machine management, high performances guaranteed

STANDARD EQUIPMENT

INTERCHANGEABLE SPINDLE HOLDERS

NO adapters
NO coupling errors



€ 6.100,00

ISO 40 - C471540

€ 6.100,00

ISO 50 - C471550

€ 6.900,00

HSK 63 - C471563



FEATURES

X axis measurement resolution 0.001 mm,
Z axis 0.001 mm

Management electronics with 32-bit RISC processor and integrated vision system

C-MOS sensor, 5x5mm framed image area, 20X magnification

Telecentric lens and LED illuminator

7" LCD color TFT graphic display (image 86x150)

Full Touch Screen for all presetter functions

Software with menus represented by icons

Lifetime free software update

Display radius / diameter, mm / inch, abs / incr.

Possibility of measurement with autocollimation

on the whole screen

Automatic calculation cycle of insert radius and angle

Management nr. 9 digital machine origins

Management nr. 9 tool tables, each consisting of 99 tools

Memorization for each tool offset of: T, Lx, Lz, insert radius

Data storage on flash memory

Connection with PC via RS-232 port and electronics BIOS update

24Vdc power supply with external power supply supplied as standard

TD236 for managing backup and restore functions of machine origins and tool lists

OPTIONAL

+ Mini-label printer

+ Table

SPEED CUT



Exceptional vibration resistance thanks to the special tooth geometry



P	M	K	N	S	H	C
●	○	○	○	○	-	-

MANUAL ARCH SHAPE	SEMI AUTOMATIC ARCH SHAPE	AUTOMATIC ARCH SHAPE	AUTOMATIC DOUBLE COLUMN	AUTOMATIC HM HIGH SPEED
○	●	●	○	-

Length mm	HT	Tooth pitch 3/4	HT	Tooth pitch 4/6
2450	74,00	A7056245034	97,00	A7056245046
2500	76,00	A7056250034	98,00	A7056250046
2590	78,00	A7056259034	103,00	A7056259046
2600	79,00	A7056260034	102,00	A7056260046
2650	80,00	A7056265034	104,00	A7056265046
2700	82,00	A7056270034	106,00	A7056270046
2750	83,00	A7056275034	108,00	A7056275046
2765	83,00	A7056276534	109,00	A7056276546
2825	85,00	A7056282534	111,00	A7056282546
2845	86,00	A7056284534	112,00	A7056284546
2950	88,00	A7056295034	116,00	A7056295046
3010	91,00	A7056301034	118,00	A7056301046
3100	93,00	A7056310034	121,00	A7056310046
3120	94,00	A7056312034	122,00	A7056312046
3150	95,00	A7056315034	124,00	A7056315046
3180	95,00	A7056318034	124,00	A7056318046
3200	96,00	A7056320034	125,00	A7056320046
3225	97,00	A7056322534	97,00	A7056322546
3320	100,00	A7056332034	130,00	A7056332046
3370	101,00	A7056337034	132,00	A7056337046
3505	105,00	A7056350534	137,00	A7056350546
3660	109,00	A7056366034	143,00	A7056366046
3900	116,00	A7056390034	152,00	A7056390046
4600	137,00	A7056460034	179,00	A7056460046

Band dimension: 27 x 0,9 mm

Teeth per inch: from 3/4 to 4/6

Tooth shape: KP hook and profile

Tooth hardness: 1500 HV

Features: Blades with special tooth geometry with reinforced profile and slightly positive angle

Tooth set: Standard

Band saw blades with carbide teeth for universal use for traditional saws also with tilting arc movement. Blade designed to be used to replace traditional bimetallic blades.

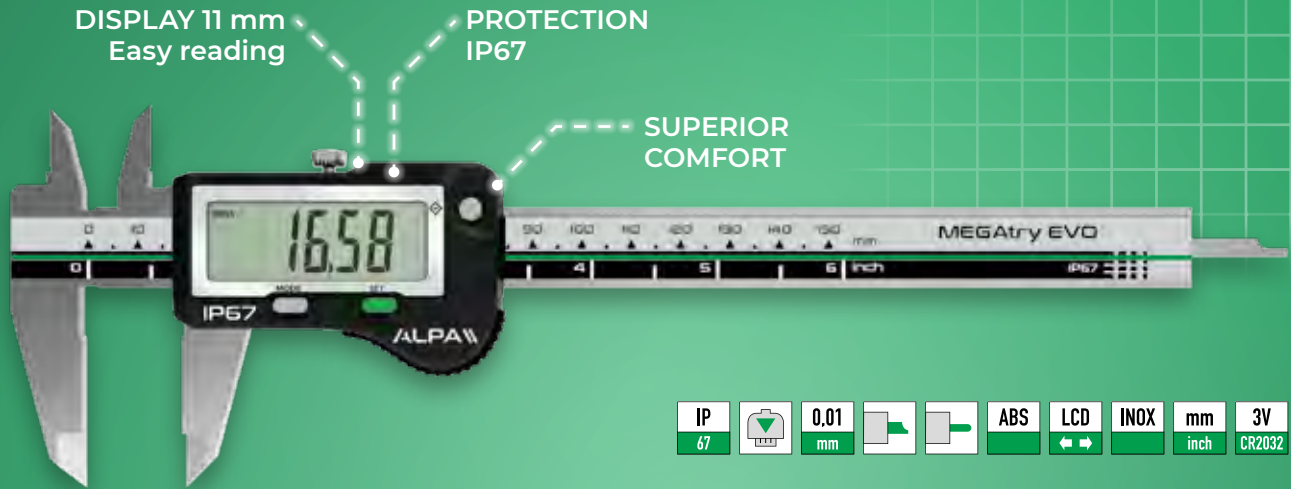


METROLOGY



ALPA MEGAtry EVO

DIGITAL CALIPERS IP67 WITH PRESET



Digital calipers IP67 with preset.
Accuracy $\pm 0,02$ mm.
Resolution 0,01 mm.
Digital caliper Swiss made IP67 electronics.
High protection against dust and liquids.
Clamping screw, hardened stainless steel frame.



Max error	0-100/20 100-300/30 (DIN 862) mm/ μ m
Repeatability	0.01 mm
Measuring speed	max 2.5 m/s
Display refresh rate	8 ms/s
Measuring system	Sylvac Inductive System (patented)
Power consumption	Working: 50 μ A - Standby mode: 8 μ A
Battery life	12 000 h
Working temperature	from + 5° to + 40°C / from + 41° to + 104°F



CODE	Price List	HT	Range mm	Rod
D0010150NDP	464,00	129,00	0 ÷ 150	■
D0010150NDT	470,00	135,00	0 ÷ 150	●
D0010200	290,00	232,00	0 ÷ 200	■
D0010300	355,00	282,00	0 ÷ 300	-

ALPA PICKall

DIGITAL CALIPERS



CODE	Price List	HT	Range mm
D0026150T	76,00	60,00	0 ÷ 150
D0026150P	76,00	60,00	0 ÷ 150
D0026200	405,00	88,00	0 ÷ 200
D0026300	458,00	126,00	0 ÷ 300

ALPA MEGAline

SMALL HOLES DEPTH DIGITAL CALIPERS IP67



CODE	Price List	HT	Range mm	Bar section mm	Pin mm
D0111120	720,00	601,00	0 ÷ 100	4	7,8 x 0,9
D0111120S	646,00	540,00	0 ÷ 150	4	5,8 x 0,6

ALPA

Measuring instruments



INOX



Hardened steel head, heat-insulating handle, Ø 8mm clamping shank for dial gauge.
Supplied without indicator.

Great strength and reliability for heavy duty in the workshops and in testing, transmission granted by the anchor movement.
Carbide moving contact, ø 8 mm clamping shank for dial gauge.
Supplied without indicator.

BORE GAUGES WITH STEEL CONTACTS

CODE	Price List	HT	Range mm	Depth mm	Contacts
D22251535	349,00	288,00	15 + 35	175	Steel
D222530100	955,00	290,00	30 + 100	250	Steel
D222550160	990,00	326,00	50 + 160	250	Steel
D2225100300	636,00	509,00	100 + 300	350	Steel
D2225100500	869,00	726,00	100 + 500	650	Steel
D2225100500S	760,00	550,00	100 + 500	350	Steel

BORE GAUGES WITH CARBIDE CONTACTS

CODE	Price List	HT	Range mm	Depth mm	Contacts
D22261535	337,00	287,00	15 + 35	175	HM
D222630100	973,00	330,00	30 + 100	250	HM
D222650160	428,00	357,00	50 + 160	250	HM
D2226100300	760,00	636,00	100 + 300	350	HM
D2226100500	974,00	814,00	100 + 500	650	HM
D2226100500S	946,00	757,00	100 + 500	350	HM

ALPA

MEASURING STANDS WITH GRANITE TABLE

DIN 876/00 compliant flatness and accuracy, sturdy, highly stable structure, hardened and grinded stainless steel stand column and fine-lapped surface, Ø 8 mm dial gauge coupling.

CODE	Price List	HT	Base mm	Column Ø x h mm	Column mm	Arm mm
D253520	450,00	360,00	300 x 200	30 x 300	Chrome-plated	Useful 180 - Ø 25 with micrometric screw
D253540	366,00	293,00	300 x 200	30 x 300	Chrome-plated and threaded	Useful 180 - Ø 25 with micrometric screw



DIAL INDICATORS Ø 40

Travel 5 mm.
Accuracy according to UNI 4180.
Stainless Steel rod and shaft,
Ø 8 mm cylindrical stem.



CODE	Price List	HT	Excursion mm	Resolution mm
D23525	57,00	46,00	5	0,01

DIAL INDICATORS Ø 58

Shock-proof mechanism (only for D235110),
accuracy according to UNI4180,
stainless steel rod and shaft,
Ø 8mm cylindrical mount.



CODE	Price List	HT	Excursion mm	Resolution mm
D235110	43,00	35,00	10	0,01
D235125	87,00	70,00	25	0,01
D235130	95,00	76,00	30	0,01

PRECISION LEVER TEST INDICATORS

Rotable bezel for zero setting. High precision
movement mounted on 6 ruby bearings. Carbide
ball stylus Ø 2 mm, adjustable within 270° and
interchangeable mounted on micro ball bearings.
1 dove tail 8mm Ø.



Resolution 0,01

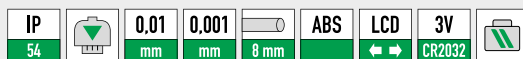
CODE	Price List	HT	Excursion mm	Diameter mm	Lever L mm
D2290052836	473,00	138,00	0,5	27,4	36
D2290053736	242,00	168,00	0,5	37	36
D2290082812	442,00	112,00	0,8	27,4	12
D2290083712	460,00	128,00	0,8	37	12

MULTIFUNCTION DIGITAL INDICATORS

Robust frame,
water and coolant resistant.
New technology with
configurable menus.
wide selection of features
(min/max, delta, tol, factor,
preset, auto off, etc.).

Automatic wake-up
and sleeping mode,
Absolute system.

Wide choice of options:
Min/Max/Delta, Factor, Preset,
Auto Off, etc...



CODE	Price List	HT	Range mm	Resolution mm
D23311250001	540,00	485,00	0 + 12,5	0,001
D2331125001	490,00	383,00	0 + 12,5	0,01
D2331250001	670,00	515,00	0 + 25	0,001
D233125001	495,00	390,00	0 + 25	0,01
D2331500001	987,00	750,00	0 + 50	0,001
D233150001	898,00	696,00	0 + 50	0,01

ALPA MEGAtower

HEIGHT GAUGES

Resolution 0,001mm
 Measuring force N 0,75 ± 1,5
 Repeatability μm 2 (\varnothing :4)

**ROBUST
 PRECISE
 RELIABLE**

+ IP67

Insert with
 ruby ball
 \varnothing 4mm

AIR CUSHION
 easy displacement on measuring table

+ AIR CUSHION

CODE	Price List	HT	Measuring range with extension mm
D4200400	6.562,00	5100,00	508
D4200700	6.990,00	5550,00	812

CODE	Price List	HT	Range mm
D4100400	4.040,00	3750,00	400

ALPA

BLACK GRANITE INSPECTION PLATES WITH STAND

DIN 876/0 compliant flatness and accuracy. Non-magnetic and electrically insulated black granite allows a higher accuracy on surface finishing and internal stress absence. Painted rectangular section structure made from stainless steel, designed for both cast iron and granite surfaces, adjustable swing brake leveling foot/tips system.



CODE	Price List	HT	Dimension mm	Weight kg
D3205630	675,00	540,00	630 x 400 x 80	92
D32051000	4.300,00	1.040,00	1000 x 630 x 140	315

ALPA LITEsurf

PORTABLE ROUGHNESS TESTER

€ 2.190 ,00

D7240LITE

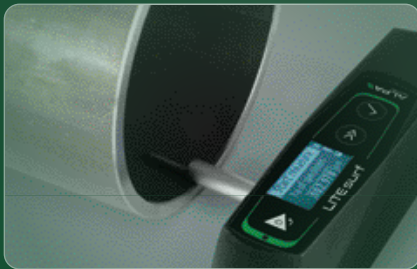
Bluetooth connection

90° probe positioning for shoulder measurements

MEASUREMENTS

8 parameters ISO 4287 (Ra; Rq; Rt; Rz; Rc; Rmax; Rsm; Rpc)
5 parameters ISO 12085 (Pt, R, AR, RX, PpC).

Data manager via APP



ALPA

DETERGENT FOR LAPPED SURFACES

Special liquid detergent for lapped surfaces.

CLEANING
Gentle, water-based
High performance



CODE	Price List	HT	Package	Quantity L
D3252500	49,00	14,00	Jar	0,5
D32525KG	67,00	50,00	Can	5

ALPA

POLISHING OIL FOR GRANITE

BLACK LIGHT is a product studied and formulated to protect, revive, preserve and polish the floors in diabase granite.



CODE	Price List	HT	Package	Quantity ml
D32570500	43,00	9,75	Jar	500
D32575000	67,00	51,00	Can	5000

ROCKWELL HARDNESS TESTERS

Universal hardness tester for ROCKWELL scale measurement on ferrous materials, main features as follows:

- +** Cast iron support structure, testing max height 170mm, depth capacity 165mm
- +** Hydraulic load application system with weight method, UNI-DIN-ASTM standard compliant 60/100/150kgf loads for ROCKWELL A, B, and C scales
- +** N. 1 Ø 150mm flat surface for workpiece positioning, N.1 Ø 55mm flat surface and N. 1 flat surface with V-shaped adapter to measure cylindrical objects

€ 1.490,00
D722001



LEEB IMPACT HARDNESS TESTERS

Scale measurement range: Leeb and scales HL, HB, HRB, HRC, HV, HS, σ_b . Measuring range: HLD (200-960) - HRC (19.8-68.5) - HRB (13.5-100) - HB (30-651) - HV (80-976) - HS (26.4-99.5) - σ_b (375-2639), with D type probe (Standard). Accuracy: ± 6 HLD (HLD=800), repeatability < 6 HLD (HLD=800). Impact direction: 360° selectable. Materials: iron, cast iron, stainless steel, aluminium, etc.



CODE	Price List	HT	Resolution	Dimension mm
D7216STR	4.650,00	1.320,00	1 HL - 1 HV - 1 HB 0,1 HRB - 0,1 HRC - 0,1 HS	76 x 37 x 153 h

Minimum measurable piece weight: 5 Kg.
Display: luminated LCD display in english. Memory: 100 groups. USB connection (Standard) with software included and 2 1.5V AA type batteries.

Standard GB/T 17394-1998, ASTM A956

THE REVOLUTIONARY MANUAL MEASURING MACHINE FOR THE WORKSHOP

€ 19.500 ,00

D7705280



COMPACT AND PORTABLE DESIGN

Its 3 rotating axes enables it to have a compact and portable design in order to be used wherever needed, in the production department next to the machine tools, in the quality control department or at the premises of third parties.



MAGNETIC HOTKEYS

Fulcrum is designed to optimise inspection times and prevent production slowdowns. Hotkeys allow you to quickly switch between functions without using the mouse.



SIMPLE USE

Its compact and portable design allows it to be used single handed, placing the parts anywhere on the measuring surface.



PC WITH SOFTWARE INCLUDED

The software has been made even simpler, while maintaining the full functionality of traditional measuring machines. The ease of use allows even less experienced operators to quickly inspect the components to be measured.



FEATURES

- Compact and portable design
- Easy single-handed use
- Shortcut keys to switch between functions
- Onboard machine use
- No air pressure required
- Free software updates

Volumetric accuracy μm^*	5.0
Row resolution	0.04 μm
Operating temperature	18 - 22 °C
Compressed air	No

LUBRICANTS



BORON AND FORMALDEHYDE RELEASER-FREE MINERAL FLUIDS

+ Excellent compatibility with water
hardnesses from 5 to 50 °f

Excellent lubricating and greasing power

Very high detergency

Long emulsion life

Excellent anti-foaming capacity
even at high pressures

High protective action on machine
and parts

Excellent safety profile and very high
compatibility with operators



UNITEC HF 535E
medium-heavy and HIGH FEED machining

APPLICATIONS	K	INOX	P <850	P <1200	Al	Mg	Cu	Ti	Recommended concentration
Grinding	●●	●●	●●	●●	●●	●	●	●	3 - 5 %
Turning	●●	●	●●●	●●	●●	●	●●	○	7 - 9 %
Drilling	●●●	●●	●●	●●	●●●	●●	●●	●	5 - 10 %
Drilling, boring	●●	●	●	●	●●	○	○	○	7 - 12 %

CODE	Price List	HT	Quantity L	Refractometric factor	Density DIN 52757 Kg/L	pH (5%) DIN 51369	Storage temperature °C
H0045020	488,00	150,00	20	1,4	0,989	9,4	5 - 40
H0045200	4.489,00	1.190,00	200	1,4	0,989	9,4	5 - 40

LTEC

VOLUMETRIC MIXER

- ADVANTAGES AND USES:
- Ease of use
 - Cost reductions
 - Individually tested
 - Swift and accurate top ups
 - Definition of concentration



H361812



H361810

CODE	Price List	HT	Concentration	Flow L/h	Water pressure Bar	Model
H361810	4.495,00	650,00	1 - 10%	1600	da 0,7 a 8	Base
H361812	4.670,00	890,00	1 - 10%	1600	da 0,7 a 8	Complete

SLIDEWAY OILS

ADVANTAGES AND USES:

- Correct adhesion of the lubricating film
- Excellent demulsivity
- Suitable for the lubrication of conventional or hydrostatic slideways
- It can also be used as a hydraulic oil
- Withstands high loads
- Excellent for slow and heavily loaded rolling bearings



CODE	Price List	HT	L	Appearance	Viscosity at 40°C ASTM D445 cSt	Viscosity index	Density DIN 52757 Kg/L	Flash point ASTM D92 °C	Pour point °C	Storage temperature °C
H2015220B1	479,00	143,00	20	Yellow	220	101	0,895	>230	-10	10 - 40
H2015220F	4.559,00	1.240,00	200	Yellow	220	101	0,895	>230	-10	10 - 40
H201532B1	470,00	136,00	20	Yellow	32	100	0,870	>220	-20	10 - 40
H201532F	4.293,00	1.030,00	200	Yellow	32	100	0,870	>220	-20	10 - 40
H201568B1	468,00	134,00	20	Yellow	68	101	0,880	>220	-21	10 - 40

HYDRAULIC OILS

ADVANTAGES AND USES:

- Multi-purpose use
- Used in machine tool hydraulic controls
- Zinc-free to prevent reactions with moisture
- Formulated with Group II bases for increased durability



CODE	Price List	HT	L	Appearance	Viscosity at 40°C ASTM D445 cSt	Viscosity index	Density DIN 52757 Kg/L	Flash point ASTM D92 °C	Pour point °C	Storage temperature °C
H2020100B1	477,84	142,00	20	Yellow	100	100	0,888	>235	-27	10 - 40
H2020100F	4.673,00	1.338,00	200	Yellow	100	100	0,888	>235	-27	10 - 40
H202032B1	459,00	127,00	20	Yellow	32	100	0,867	>220	-30	10 - 40
H202032F	4.490,00	1.190,00	200	Yellow	32	100	0,867	>220	-30	10 - 40
H202046B1	45,00	36,00	5	Yellow	46	101	0,867	>220	-30	10 - 40
H202046B3	446,00	131,00	20	Yellow	46	101	0,867	>220	-30	10 - 40

VCI PACKAGING

The LTEC VCI (Volatile Corrosion Inhibitor) bags have been designed to maximize the protection of machined components against rust or the formation of metal oxides during storage or transport. The LTEC VCI bags are compatible with the most common types of commercially available corrosion inhibitor oils and waxes.

ADVANTAGES:

- easy and inexpensive to use
- compatible with most corrosion inhibitors
- very long protection



PROTECTION

36 months indoor
24 months outdoor



CODE	Price List	HT	pz	Dimensions mm	Thickness microns
H217010020X30	220,00	176,00	1600	200 x 300	100
H217010033X22	244,00	168,00	320	330 x 220 h 550	100
H217010044X33	205,00	164,00	150	440 x 330 h 820	100

SPILL PALLETS IN STEEL FOR DRUMS

Spill pallets in steel for the storage of 200-litre drums, positioned directly on galvanized grating. Grating height of 30 mm.

RAL 7001 gray colour.

Compliant with International Standard
EN ISO 3834-2:2021



CODE	Price List	HT	A mm	B mm	C mm	Storage capacity
P6803F1	522,00	295,00	860	860	430	1 drum of 200 l
P6803F2	562,00	370,00	1340	850	330	2 drums of 200 l
P6803F4	938,00	600,00	2660	850	330	4 drums of 200 l
P6803F4SQ	798,00	465,00	1340	1250	300	4 drums of 200 l
P6803F8	1.417,00	900,00	2720	1250	300	8 drums of 200 l

RASEN BELT SEPARATOR N

Designed for the removal of foreign oil in machine tools, washing parts, compressor condensation and in general where it is necessary to separate surface oil from the underlying fluid.

FEATURES:

- Stainless steel and light alloy structure
- PVC/Polyurethane belt
- Low-voltage reduction gear, protected against dust and accidental impact
- 7 speeds, potentiometer adjusted
- Includes air coupling fixture for the oxygenation of the emulsion
- Equipped with a level switch

ADVANTAGES:

- Prevents microbiological deterioration of the operating fluid
- Improves manufacturing standards
- Reduces machine tool soiling
- Eliminates machine downtimes due to manual de-oiling interventions



CODE	Price List	HT	Draft mm	Belt dimension mm	Power supply V
H4042N30X2,5	498,00	435,00	300	25	230
H4042N30X5	720,00	620,00	300	50	230

ANTI-OXIDANT PROTECTIVES

PROTEX NS 80H is a protective agent for metal components which are stored in conditions of high humidity and high salinity. Thanks to a careful formulation and an excellent balance of detergents and solvents, PROTEX NS 80H has excellent degreasing properties and a "dewatering" effect. The product passes the ASTM B117 test (test for the determination of resistance to saline fog) with 90 hours of resistance. PROTEX NS 80H maintains its protection capacity for 15 months in case of detachment indoors while outdoors, by allocating the material indoors, it manages to maintain its protective capacities for 9 months.



CODE	Price List	HT	Packaging	L
H2116020	203,90	163,00	Can	20

OIL MIST COLLECTORS FOR EMULSIONS

+ It features an innovative system designed to achieve an effective abatement of pollutants directly at the source, with the positioning of the electric fan downstream in relation to the filter battery.

Swift and easy filter changes.

99.99% filtration rate (according to EN 779-EN 1822 HEPA).

Maintenance costs cut by half.

Healthier and cleaner work environments.

Complies with current health and safety regulations for industrial working environments (Legislative Decree 25/02 - Legislative Decree 81/2008).

CAB
INTERIOR VOLUME

▶ RECOMMENDED
MODEL

Up to 3mc

AFM MIST PLUS 500

From 3mc to 5mc

AFM MIST PLUS 1000

From 5mc to 8mc

AFM MIST PLUS 2000

From 8mc to 10mc

AFM MIST PLUS 3000



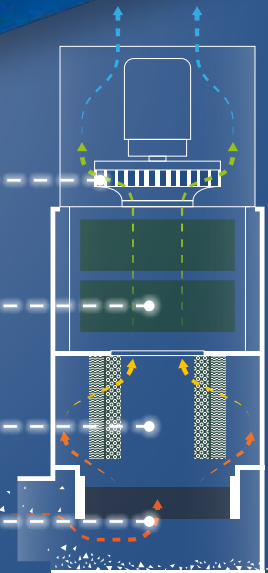
HOW DOES IT WORK?

Electric fan

Filter
absolute

Cartridge filter
paper lining

Synthetic prefilter



CODE	HT	Model	Suction air flow m ³ /h	Power kw	Inlet Ø mm	Noise level dBA	Static pressure Pa	Filtering surface m ²
H54250500	3.000,00	AFM MIST PLUS EMULSION - 500	700	0,55	125	62	820	5,7
H54251000	3.450,00	AFM MIST PLUS EMULSION - 1000	1200	1,1	150	64	1100	8,4
H54252000	4.050,00	AFM MIST PLUS EMULSION - 2000	2100	1,5	200	68	1400	11,9
H54253000	4.500,00	AFM MIST PLUS EMULSION - 3000	3100	2,2	250	72	2000	14

MRO



SELF-TILTING SCRAP HOLDERS

Fork mounted structure with fork lift; simple and safe automatic emptying of the container through the tilting lever without leaving the forklift truck; watertight collection tank with sheet metal filter for the separation of liquids and solids and ball drain cock.

Compliant with European standards, blue RAL 5004.



Watertight collection tank with sheet metal filter for the separation of liquids and solids and ball drain cock.

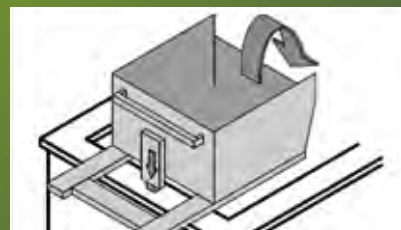
CONTROLLED TIPPING



Safety chain



Safety system

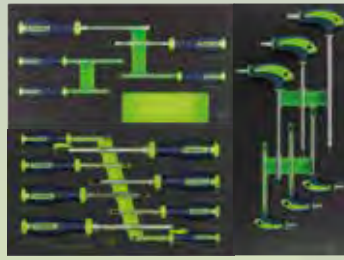


Automatic tipping-release mechanism

CODE	Price List	HT	Model	Capacity kg	Weight Kg	A x B x C mm	D mm	E mm	Inclination °
P4511280	4.300,00	730,00	lt - 280	600	80	970 x 750 x 890	700	790	25,1
P4511300	4.450,00	780,00	lt - 300	600	102	1350 x 820 x 650	490	520	63,5
P4511500	4.600,00	850,00	lt - 500	1000	130	1350 x 920 x 910	700	740	57,6
P4511750	4.700,00	900,00	lt - 750	1350	152	1350 x 1070 x 1040	825	800	49,6
P45111000	4.900,00	1.000,00	lt - 1000	1700	181	1550 x 1070 x 1210	970	920	54



WX1060/SE12 Combination wrenches



WX4200/SE5 Slotted screwdrivers



WX4590/31 Set of bits 1/4"

WX1950/SE8 Heavy duty double ended offset socket wrenches

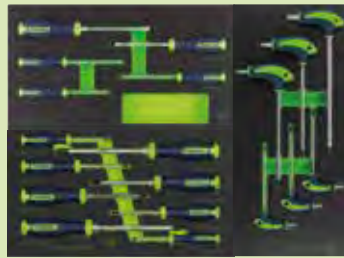
WX4205/SE8 Screwdrivers PH/PZ

WX9500/SE2 Hammer and mallet

WX2750/SE6 Hexagonal wrenches with t-handles



WX1060/SE12 Combination wrenches



WX4200/SE5 Slotted screwdrivers



WX3750/SE4 Pliers and nippers



WX4590/31 Set of bits 1/4"

WX2290/SE40 Socket wrenches 1/2"

WX4205/SE8 Screwdrivers PH/PZ

WX7620/SE5 Set of files for mechanics

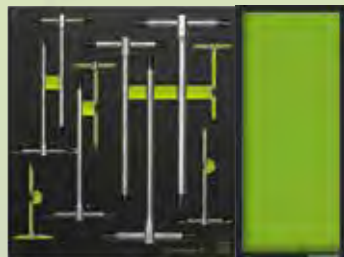
WX9500/SE2 Hammer and mallet

WX2750/SE6 Hexagonal wrenches with t-handles

WX9515/SE12 Set of assorted tools



WX1060/SE16 Combination wrenches



WX2717/SE10 Set of hex. male t-handle with fixed shaft



WX2095/SE71 1/4" and 1/2" Socket wrenches



WX9505/SE6 Set of assorted tools

WX4230/SE10 Slotted and phillips screwdrivers

WX9492 Eva tray modules with 1 empty tray

WX3750/SE4 Pliers and nippers

WX9512/SE12 Hacksaw and cutting nippers

WX9492 Eva tray modules with 1 empty tray

WODEX

TOOL CABINETS WITH MRO ASSORTMENTS



WX9410/B7SCS WITH MRO ASSORTMENTS

CODE	Price List	HT	Composition
1344587	4.800,00	1.030,00	Tool cabinets Wodex E8215B7S + 72 tools
1344618	2.055,00	1.180,00	Tool cabinets Wodex E8215B7S + 125 tools
1344666	2.292,00	1.310,00	Tool cabinets Wodex E8215B7S + 129 tools

WX9410/B7SCS

CODE	Price List	HT
E8215B7S	4.000,00	700,00

WODEX

SCREWDRIVERS PREMIUM QUALITY IN SET

WX4255/S5 - WX4255/S7 - WX4255/S8 - WX4255/S11



CODE	HT	Pieces	Composition
E608805	18,00	5	⊖ WX4000 3x75 - 4x100 - 5,5x100 mm ⊕ WX4050 PH1x80 - PH2x100 mm
E608807	30,00	7	⊖ WX4000 3x75 - 4x100 - 5,5x100 - 6,5x125 - 8x175 mm ⊕ WX4050 PH1x80 - PH2x100 mm
E608808	28,00	8	⊖ WX4000 2,5x75 - 3x75 - 4x100 - 5,5x100 - 6,5x125 mm ⊕ WX4050 PH0x60 - PH1x80 - PH2x100 mm
E608811	45,00	11	⊖ WX4000 2,5x75 - 3x75 - 3,5x100 - 4x100 - 5,5x100 - 6,5x125 - 8x175 mm ⊕ WX4050 PH0x60 - PH1x80 - PH2x100 - PH3x150 mm

WODEX

SCREWDRIVERS PREMIUM QUALITY IN SET

WX4260/S7 - WX4260/S8 - WX4260/S10 - WX4260/S15



CODE	HT	Pieces	Composition
E609007	25,00	7	⊖ WX4000 3x75 - 4x100 - 5,5x100 mm ⊕ WX4050 PH1x80 - PH2x100 mm ⊖ WX4100 PZ1x80 - PZ2x100 mm
E609008	32,00	8	⊖ WX4000 3x75 - 4x100 - 5,5x100 - 6,5x125 mm ⊕ WX4050 PH1x80 - PH2x100 mm ⊖ WX4100 PZ1x80 - PZ2x100 mm
E609010	35,00	10	⊖ WX4000 2,5x75 - 3x75 - 4x100 - 5,5x100 - 6,5x125 mm ⊕ WX4050 PH0x60 - PH1x80 - PH2x100 mm ⊖ WX4100 PZ1x80 - PZ2x100 mm
E609015	60,00	15	⊖ WX4000 2,5x75 - 3x75 - 3,5x100 - 4x100 - 5,5x100 - 6,5x125 - 8x175 mm ⊕ WX4050 PH0x60 - PH1x80 - PH2x100 - PH3x150 mm ⊖ WX4100 PZ0x60 - PZ1x80 - PZ2x100 - PZ3x150 mm

WODEX

HEXAGONAL SCREWDRIVERS WITH BALL END

WX2810/S5



Hexagonal screwdrivers **PREMIUM QUALITY** with ball end, blades in satin chrome-vanadium steel, precision hardened **BLACK-TIP** with surface hardness of 58 ± 2 HRC and torque 20% higher than DIN 8764. Hypoallergenic, anti-slip, soft and comfortable **ERGOFORM** handles made of **SANTOPRENE**® that guarantees maximum grip for fast and precise work. Size indication on the handle head. Compliant with RoHS and REACH directives.

CODE	Price List	HT	Pieces	Composition
E252205	27,66	16,00	5	2,5x100 - 3x125 - 4x125 - 5x150 - 6x150 mm

WODEX

HEXAGONAL NUT DRIVERS WITH HANDLE

WX1950/S8



Hexagonal extended nut drivers with **PREMIUM QUALITY** handle for hexagonal head screws and nuts. Satin chrome-vanadium steel blade, hypoallergenic, anti-slip, soft and comfortable **ERGOFORM** grip made of **SANTOPRENE**® that guarantees maximum grip for fast and accurate work. Size indication on the handle head. Compliant with RoHS and REACH directives.

CODE	Price List	HT	Pieces	Composition
E145208	85,86	50,00	8	5x125 - 5,5x125 - 6x125 - 7x125 - 8x125 - 9x125 - 10x125 - 13x125 mm

T-HANDLE TAP WRENCHES
WX5860/S

T-handle Tap wrenches reversible for right and left use or with lock. Hardened 2 jaw pliers for clamping with square section shank tools and sliding T-handle, very useful for threading in difficult to access points. Short version.



L

CODE	Price List	HT	Size N.	Square mm	For taps M	L mm
F82101	43,49	8,50	1	2,5 - 5,5	3 - 10	85
F82102	46,29	10,50	2	4,5 - 7	5 - 12	110
F82103	498,99	70,00	3	9 - 12	13 - 20	115

Size N.3 Reinforced execution Ø 45 mm, 22 mm hexagon and 310 mm long sliding handle

T-HANDLE TAP WRENCHES
WX5861/S

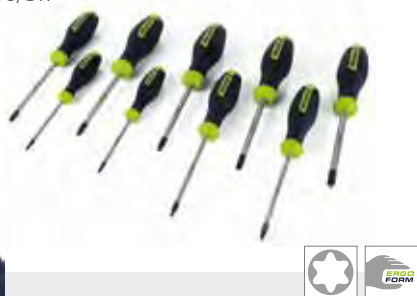
T-handle Tap wrenches reversible for right and left use or with lock. Hardened 2 jaw pliers for clamping with square section shank tools and sliding T-handle, very useful for threading in difficult to access points. Short version. **Premium Quality Made in Germany execution for heavy machining.**



L

CODE	Price List	HT	Size N.	Square mm	For taps M	L mm
F82111	26,49	17,00	1	2,5 - 5,5	3 - 10	85
F82112	92,47	21,00	2	4,5 - 7	5 - 12	100

SCREWDRIVERS FOR TORX® SCREWS
WX2940/S9 - WX2940/S11

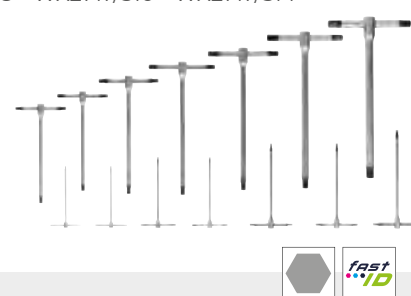


BOX



CODE	HT	Pieces	Composition
E337309	30,00	9	WX2940/S9 T8x75 - T9x75 - T10x100 - T15x100 - T20x100 - T25x100 - T27x100 - T30x100 - T40x100 mm
E337311	40,00	11	WX2940/S11 T6x75 - T7x75 - T8x75 - T9x75 - T10x100 - T15x100 - T20x100 - T25x100 - T27x100 - T30x100 - T40x100 mm

FIXED T-HANDLE HEXAGONAL WRENCHES IN SET
WX2717/S7 - WX2717/S8 - WX2717/S10 - WX2717/S14



BOX



CODE	HT	Pieces	Composition
E264407	70,00	7	WX2717/S7 2 - 2,5 - 3 - 4 - 5 - 6 - 8 mm
E264408	85,00	8	WX2717/S8 2 - 2,5 - 3 - 4 - 5 - 6 - 8 - 10 mm
E264410	115,00	10	WX2717/S10 2 - 2,5 - 3 - 3,5 - 4 - 5 - 6 - 8 - 10 - 12 mm
E264414	180,00	14	WX2717/S14 2 - 2,5 - 3 - 3,5 - 4 - 4,5 - 5 - 6 - 7 - 8 - 9 - 10 - 12 - 14 mm

SCREWDRIVERS VDE 1000 VOLT INSULATED IN SET
WX4350/S7 - WX4350/S8



BOX



CODE	HT	Pieces	Composition
E616707	28,00	7	WX4030 2,5x75 - 3,0x100 - 4,0x100 - 5,5x125 mm WX4080 PH0x60 - PH1x80 - PH2x100 mm
E616708	32,00	8	WX4030 2,5x75 - 3,0x100 - 4,0x100 - 5,5x125 mm WX4080 PH0x60 - PH1x80 - PH2x100 mm WX4190 3,0x70 mm Cercafase 105-250 Volt

SCREWDRIVERS VDE 1000 VOLT INSULATED IN SET
WX4355/S7 - WX4355/S8



BOX



CODE	HT	Pieces	Composition
E616807	28,00	7	WX4030 2,5x75 - 3,0x100 - 4,0x100 - 5,5x125 mm WX4130 PZ0x60 - PZ1x80 - PZ2x100 mm
E616808	32,00	8	WX4030 2,5x75 - 3,0x100 - 4,0x100 - 5,5x125 mm WX4130 PZ0x60 - PZ1x80 - PZ2x100 mm WX4190 3,0x70 mm Cercafase 105-250 Volt

HEXAGONAL WRENCHES WITH HANDLE IN SET WX2750/S6



Hexagonal wrenches **PREMIUM QUALITY** with spherical ends, bi-component, hypoallergenic and anti-slip **ERGOFORM** handles made of **SANTOPRENE®** with high-density polypropylene core. Hexagonal blades in special chrome vanadium steel with satin finish.

CODE	Price List	HT	Pieces	Composition
E256306	57,00	35,00	6	2,5 - 3 - 4 - 5 - 6 - 8 mm

ELECTRICIAN'S SCISSORS WX4770



€ 15,00

F2504155

Minimum quantity 2 pieces

ELECTRICIAN'S SCISSORS INSULATED 1000V WX4775



€ 23,00

F2640155

Minimum quantity 2 pieces

SET OF PLIERS FOR INTERNAL AND EXTERNAL CIRCLIPS WX3420/S4 - WX3420/S8 - WX3420/S12

Set of **AUTOMOTIVE LINE** straight nose pliers for internal and external circlips. Hardened chrome-vanadium steel body, high performance steel tips for high stress continuous use. The angle of the non-slip tip allows the circlip to be held securely by the tips during compression or expansion. **ERGOFORM** grip handles with anti-slip coating.

STANDARD DIN ISO 5256 - DIN ISO 5254



BOX					Composition	
CODE	Price List	HT	Pieces	Composition		
F045904	78,44	51,00	4	WX3400 WX3405 WX3410 WX3415	Pliers for internal circlips - straight nose Ø 19-60 mm Pliers for internal circlips - noses 90° Ø 19-60 mm Pliers for external circlips - straight nose Ø 19-60 mm Pliers for external circlips - straight nose 90° Ø 19-60 mm	
F045908	148,40	96,00	8	WX3400 WX3405 WX3410 WX3415	Pliers for internal circlips - straight nose Ø 12-25 - Ø 19-60 mm Pliers for internal circlips - noses 90° Ø 12-25 - Ø 19-60 mm Pliers for external circlips - straight nose Ø 10-25 - Ø 19-60 mm Pliers for external circlips - noses 90° Ø 10-25 - Ø 19-60 mm	
F045912	222,60	140,00	12	WX3400 WX3405 WX3410 WX3415	Pliers for internal circlips - straight nose Ø 8-13 - Ø 12-25 - Ø 19-60 mm Pliers for internal circlips - noses 90° Ø 8-13 - Ø 12-25 - Ø 19-60 mm Pliers for external circlips - straight nose Ø 3-10 - Ø 10-25 - Ø 19-60 mm Pliers for external circlips - noses 90° Ø 3-10 - Ø 10-25 - Ø 19-60 mm	



COPPER HAMMERS
WX5495



Minimum quantity 2 pieces

Mallets with copper head and shaped ash wood handle. Handle with steel wedge fastening and locking pin.

CODE	Price List	HT	Handle mm	Weight g
F53910200	27,30	18,00	230	200
F53910300	32,30	21,00	255	300
F53910400	37,78	26,00	275	400
F53910500	46,20	30,00	275	500
F53910600	50,49	33,00	275	600
F53910800	64,56	42,00	280	800
F53911000	76,47	50,00	280	1000
F53911500	106,92	69,00	295	1500
F53912000	131,31	85,00	295	2000



MALLETS IN DRAWN COPPER 80 BRINELL
WX5510



Mallets PREMIUM QUALITY with double hardened copper head obtained from drawn bar with 80/100 BRINELL hardness. Three-component handle with protective nylon collar and permanent mechanical fastening with steel wedge and epoxy resin. The ergonomic handle is composed of an aluminium core covered in Nylon and an anti-vibration grip in non-slip rubber.

STANDARD DIN 5130 - 1195 - 5111

CODE	Price List	HT	Handle mm	Weight g
F53780500	60,10	39,00	300	500
F53780750	79,50	52,00	320	750
F53781000	99,85	65,00	320	1000
F53781500	146,92	96,00	360	1500



STEEL MALLETS WITH POLYURETHANE HEAD 95 SH
WX5450



Minimum quantity 2 pieces

Mallets with painted steel head and interchangeable polyurethane striking tips hardness 95 Shore. Shaped ash wood handle and steel wedge fastening.

STANDARD UNI 7784

CODE	Price List	HT	Ø head mm	Handle mm	Weight g
F533122	17,60	12,00	22	260	140
F533128	18,97	13,00	28	280	250
F533135	23,00	15,00	35	305	350
F533142	26,50	18,00	42	310	620
F533150	36,04	23,00	50	345	900
F533160	50,88	32,00	60	380	1300



GERMAN TYPE HAMMERS
WX5000



Minimum quantity 2 pieces

German type bench hammers in induction hardened C45 steel, ground and stove enamelled, head with polished striking faces and chamfered edges. Nylon handle protection sleeve and steel wedge fastening. Shaped varnished ash wood handles.

STANDARD DIN 1041 - 1193 - 1195 - 5111

CODE	Price List	HT	Handle mm	Weight g
F51150100	7,59	4,80	260	100
F51150200	8,36	5,40	280	200
F51150300	9,32	6,00	300	300
F51150400	11,04	7,00	310	400
F51150500	12,26	8,00	320	500
F51150600	14,19	9,00	330	600
F51150800	16,38	10,00	350	800
F51151000	18,94	12,00	360	1000
F51151500	24,56	15,00	380	1500
F51152000	32,73	21,00	400	2000

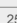
FLAT CUTTING DISCS



SPACE CUT

Latest generation flat cutting discs, TOP QUALITY. Excellent cutting performance and long service life. Suitable for steel and stainless steel. To be used on angle grinders.

P	M	K	N	S	H
●	●	○	○	-	-

CODE	HT	Dimension mm	
G020711510	1,47	115 x 1,0 x 22,2	25
G020711516	1,47	115 x 1,6 x 22,2	25
G020712510	1,59	125 x 1,0 x 22,2	25
G020712516	1,59	125 x 1,6 x 22,2	25
G020723019	3,25	230 x 1,9 x 22,2	25


DEPRESSED CENTRE GRINDING DISCS



SPACE GRIND

Last generation depressed centre discs, TOP QUALITY. High performance grinding and exceptional removal with long service life. Suitable for steel and stainless steel. To be used on angle grinders.

P	M	K	N	S	H
●	●	○	○	-	-

CODE	HT	Dimension mm	
G031711570	2,10	115 x 7,0 x 22,2	10
G031712570	2,25	125 x 7,0 x 22,2	10
G031723070	5,30	230 x 7,0 x 22,2	10


FLAT CUTTING DISCS FOR NON-FERROUS MATERIALS

NEW



Flat aluminum oxide cutting discs, ideal for processing Aluminum, Bronze, Copper, Brass and non-ferrous metals in general. This innovative disc structure avoids the clogging typical of these materials and guarantees fast and precise cuts.

P	M	K	N	S	H
-	-	-	●	●	-

CODE	HT	Dimension mm	Specification	
G031411510	2,20	115 x 1,0 x 22,23	A60N-BFP	25
G031411516	2,20	115 x 1,6 x 22,23	A46N-BFP	25
G031412510	2,45	125 x 1,0 x 22,23	A60N-BFP	25
G031412516	2,45	125 x 1,6 x 22,23	A46N-BFP	25

FIBER DISCS CERABOND X


NEW



C+ CERABOND X

Ceramic fibre disc for processing steel and stainless steel. Cooling additives. Exceptionally high performance. Also in the bucket version to eliminate deformation of the discs.

P	M	K	N	S	H
●	●	○	○	-	-

CODE	HT	Ø mm	Grain	Box	
G212811536	1,25	115	36	Box	25
G212811560	1,25	115	60	Box	25
G212812536	1,30	125	36	Box	25
G212812560	1,30	125	60	Box	25
G212811536BOX	1,25	115	36	Bucket	50
G212811560BOX	1,25	115	60	Bucket	50
G212812536BOX	1,30	125	36	Bucket	50
G212812560BOX	1,30	125	60	Bucket	50



KIT DRILL, SCREWDRIVER and BELT SANDER

M12 FBFL13-402B



M12 FDD2-0

KIT PRICE

€ 449,00

N4112V

BELT SANDER M12 FUEL™ 13 MM

- The first 12V cordless sander with 13mm belt
- Increased balance and performance compared to pneumatic machines
- The lightest belt sander on the market
- Two speed selection option to ensure maximum control in all applications
- The head can rotate 360 degrees
- It allows the trigger switch to be locked to allow for effortless operations, even for long periods of time
- FUEL™ technology
- Compatible with all M12™ platform batteries
- Belt replacement without use of tools

No-load speed rpm	0-7,200 / 0-14,500
Belt speed mm	0-560 / 0-1,105
Belt length mm	457
Belt width mm	13
Weight with battery bundle kg	1,3

COMPACT DRILL SCREWDRIVER M12 FUEL™

- Extremely compact (151mm)
- 45 Nm torque
- Excellent Torque to Dimension ratio
- Heavy Duty 13mm chuck
- Mechanical clutch with 13 settings, selector for screwing operations, without/with impact
- FUEL™ platform
- Compatible with all M12™ platform batteries

No-load speed rpm	0-450 / 0-1,550
Keyless chuck mm	13
Max cap. wood/metal drilling mm	35/13
Weight with battery bundle kg	1,4



DRILLING MACHINES 18CO

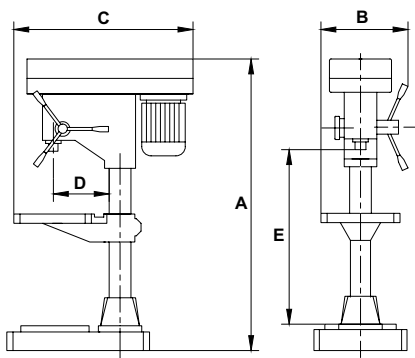
Precise, silent and reliable drilling machines, compliant with safety standards.

Features:

- Steel column
- Cast iron base
- Ground swivel table and vice
- Manual downfeed with depth stop
- Three phase motor 400 Volt
- Safety guard
- 2 speed motor

€ 3.250,00

N038018



CODE	Drilling mm	Coupling	Range mm	Table mm	Ø Column mm	Distance spindle to table mm	Kw HP	A mm	B mm	C mm	D mm	E mm	Weight kg
N038018	1 - 18/20	CM2	90	240 x 240	80	50 - 630	0,56 0,75	1625	490	660	200	1160	140



KIT TOOL BOX FOR PROFESSIONALS

Kit tool box composed of:

HAND TAPS HSS DIN 352 / M3-M12

- For cutting internal threads
- Tested industrial quality

90° COUNTERSINKS HSS DIN 335 C / TIN / Ø 6,3-20,5 mm

- 100% defined cutting geometric
- Optimized chip removal
- Tested and reliable industrial quality

TWIST DRILLS HSS-G Ø 1-10,5 mm x 0,5 mm IN PASSI

- Universal twist drill for cordless drilling machines
- Ø 1,0-10,5 mm + Ø 3,3 / 4,2 / 6,8 / 10,2 mm (size for threading)
- For the most materials



CODE	Price List	HT	Pieces n.
N5225SET3	499,00	99,00	51

BENCH BELT SANDERS

Industrial bench belt sanders. Made in Italy. Engine induction with thermal protection bimetallica which protects from any overloading ensuring an almost unlimited process of the sander. Quick substitution of the abrasive belt.

Belts to be ordered separately.



CODE	N320003
Price List	4.130,00
HT	966,00
Belt mm	100 x 1000
Electric motor	Three-Phase 400 V
HP	1,5
Kw	1,1
RPM	2800
m/s	19
Weight kg	38

TILTING BELT SANDERS

Industrial belt sanders. Made in Italy, double speed engine induction (N320503BT), arm orientated 0° a 360°, pulley drive loader, complete with a low voltage control unit of 24 volts (N320503BT) Emergency stop button. Quick substitution of the abrasive belt.

Belts to be ordered separately.



CODE	N320503	N320503BT
Price List	1.037,00	2.247,00
HT	1.570,00	1.895,00
Belt mm	120 x 1500	120 x 1500
Electric motor	Three-Phase 400 V	Three-Phase 400 V
HP	1,1	0,8 - 1,1
Kw	0,8	0,6 - 0,8
RPM	2800	1400 - 2800
m/s	14	14 - 28
Weight kg	87	88

INDUSTRIAL BELT SANDERS

Industrial belt sanders. Made in Italy. Designed in the total respect of Health and Safety regulations of the working environment. Intergrated with a complete vacume cleaner. Adjustable double speed drive 0° a 360°, pulley wheel, full control of commands with a low voltage control unit of 24 volts. Emergency stop button. Quick substitution of the abrasive belt.

Belts to be ordered separately.



CODE	N321003BT
Price List	3.235,00
HT	2.765,00
Belt mm	120 x 1500
Electric motor	Three-Phase 400 V
HP	0,8 - 1,1
Kw	0,6 - 0,8
RPM	1400 - 2800
m/s	14 - 28
Weight kg	38

TORCHES FOR MIG-MAG WIRE WELDING

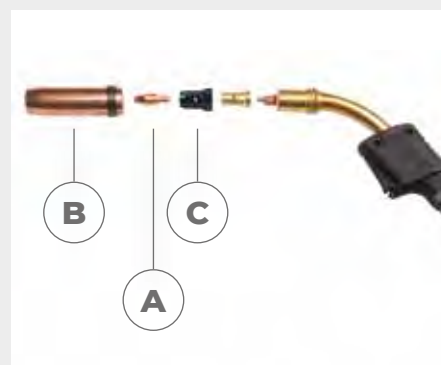
Semi-automatic, air-cooled wire welding torches. Cable length 4 m. Rotating handle and extra flexible cable. Parts subject to wear in compliance with the major European standards.

CODE	J72271504	J72272504	J72273604
Price List	403,40	436,50	496,90
HT	80,00	108,00	155,00
Model	LGS2-150G	LGS2-250G	LGS2-360G
Work cycle (CO ₂)	180 A to 60%	230 A to 60%	330 A to 60%
APPLICATION	Thin thickness	Thin thickness light carpentry	Construction sites Media carpenterial
Ø Max wire	mm 1,0	1,0	1,2
Contact tip	mm 0,8	1,0	1,2
Conical nozzle	mm 12	15	16



SPARE PARTS FOR MIG-MAG WIRE TORCH

CODE	Price List	HT	Mod. Torch	Image	Description	Type	
J7230150A08	9,80	6,90	150	A	Contact tip (10pcs)	M6x25 Ø0,8	1
J7230150A10	9,50	7,30	150	A	Contact tip (10pcs)	M6x25 Ø1,0	1
J7230150B12	3,40	2,35	150	B	Conical nozzle	Ø12,5	5
J7230250A08	8,70	6,70	250	A	Contact tip (10pcs)	M6x25 Ø0,8	1
J7230250A10	9,50	7,30	250	A	Contact tip (10pcs)	M6x25 Ø1,0	1
J7230250B15	5,50	4,25	250	B	Conical nozzle	Ø15	5
J7230360A10	44,40	11,10	360/505	A	Contact tip (10pcs)	M8x30 Ø1,0	1
J7230360A12	42,50	9,60	360/505	A	Contact tip (10pcs)	M8x30 Ø1,2	1
J7230360B16	6,90	5,30	360	B	Conical nozzle	Ø16	5
J7230360CST	8,50	6,50	360	C	GAS diffuser (10pz)	Standard	1
J7230505B16	5,70	4,40	505	B	Conical nozzle	Ø16	5
J7230505CST	40,90	7,70	505	C	GAS diffuser (10pz)	Standard	1



CLEAN GO WELDING FUMES ASPIRATORS

The CLEANGO welding fumes aspirators are represented for their small size, easy use and operating efficiency, the most economical solution to aspiration problems, filtration and deodorization of welding fumes. These welding fumes aspirators are distinguished by their high silent operation established due to pivoting wheels with brakes. The maintenance of the machine is restricted to the installation of the cellulose filter cartridge, which only requires short time and unskilled personnel.



Standard equipment:

- Self-supporting arm evolution no smoke Ø 150 mm length 3 m
- Cellulose filter of high performance IFA/BGIA M-CEL Code 1110670
- 1 Manetermic switch ON/OFF
- 1 Hour counting device

Optional:

- Cartridge with 2,5 kg of active carbon Code 1161611

€ 1.790,00

N6055ASP

Power supply	V - Hz	400 - 50
Power	kW	1,1
Brake capacity	m ³ /h	1400
Medium filter	IFA/BGIA	M CEL
Filter efficiency		99%
Noise level	dB(A)	72
Dimension	mm	* 756 x 702 x 916H
Weight	Kg	89

* Max dimension of the aspirator without the self supporting arm No Smoke

MULTIFUNCTION WELDERS

Monophase multifunction welding machine with Inverter technology. It carries out MIG, MMA and TIG LIFT welding processes. Portable, light and robust. Equipped with a large display for consulting the parameters. It is compatible with motor generator. Arc Force and Hot Start function that facilitate the start and help keep the arc lit. Anti Sticking Function. Polarity change. Includes MIG torch with 3m cable and 3m work cable.

**BESTER 190C
MULTI**



€ 680 ,00
J6125190



CODE		J6125190
Power supply voltage	V	230 single-phase
Power setting MIG	A	30 - 180
Intermittence ratio MIG	A	180 (20%) - 115 (60%) - 90 (100%)
Power setting MMA	A	15 - 180
Intermittence ratio MMA	A	180 (15%) - 95 (60%) - 75 (100%)
Power setting TIG	A	15 - 180
Intermittence ratio TIG	A	180 (25%) - 120 (60%) - 90 (100%)
Max reel size	kg	5
Cable diameter	mm	0,6 ÷ 1,0
Connector size	mm	13

WORKS
SAFETY SHOES

NEW

MOVE 400

€ 65,00
K1643














WORKS
SAFETY SHOES

JUMP 500

€ 63,00
K1620













WORKS
SAFETY SHOES

STREET

€ 48,00
K1640

















WORKS
SAFETY SHOES



RING 400

€ 32,00
K1211





















FOOTWEAR ICONS LEGEND

-  Safety requirements SIPL
-  Safety requirements SIP
-  Non-slip tread
-  Non-slip tread for ceramic-glycerine
-  Steel midsole
-  Antistatic footwear
-  Heat resistance by contact
-  Oil resistant sole
-  200 joule toe cap
-  Energy absorbing heel
-  Breathable leather upper

K1643	K1620	K1640	K1211	EU	US
-	-	-	K121136	36	4,5
-	-	-	K121137	37	5
K164338	-	K164038	K121138	38	5,5
K164339	K162039	K164039	K121139	39	6
K164340	K162040	K164040	K121140	40	7
K164341	K162041	K164041	K121141	41	8
K164342	K162042	K164042	K121142	42	8,5
K164343	K162043	K164043	K121143	43	9
K164344	K162044	K164044	K121144	44	10
K164345	K162045	K164045	K121145	45	11
K164346	K162046	K164046	K121146	46	11,5
K164347	K162047	K164047	K121147	47	12



COWHIDE GRAIN LEATHER GLOVES

PURCHASING

- 12 pairs → € 2,35 a pair
- 120 pairs → € 2,00 a pair
- 360 pairs → € 1,75 a pair

While stocks last for sizes 8 and 9

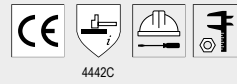


2143X

CODE		EU	
K21007	M	7	12
K21008	L	8	12
K21009	XL	9	12
K210010	XXL	10	12
K210011	XXXL	11	12



CUT RESISTANCE GLOVES COATED IN POLYURETHAN



4442C

CODE	Price List	HT		EU	
K234607	6,20	3,70	7	S	12
K234608	6,20	3,70	8	M	12
K234609	6,20	3,70	9	L	12
K234610	6,20	3,70	10	XL	12



GLOVES IN POLYESTER COATED IN POLYURETHANE

PURCHASING

- 12 pairs → € 1,00 a pair
- 120 pairs → € 0,80 a pair
- 360 pairs → € 0,55 a pair



2121X

CODE		EU	
K23106	S	6	12
K23107	M	7	12
K23108	L	8	12
K23109	XL	9	12
K231010	XXL	10	12

DISPOSABLE GLOVES IN EMBOSSED NITRILE



JKPT

VIRUS

CODE	Price List	HT		EU	
K25138	22,70	10,50	M	8	50
K25139	22,70	10,50	L	9	50
K251310	22,70	10,50	XL	10	50

DISPOSABLE NITRILE GLOVES



EN 374-1

CODE	Price List	HT		EU	
K251607	9,50	6,00	S	7	100
K251608	9,50	6,00	M	8	100
K251609	9,50	6,00	L	9	100
K251610	9,50	6,00	XL	10	100

LIQUID VACUUM CLEANERS

- Professional liquid vacuum cleaners, practical, versatile e professionals
- Twin engine
- Overhead door frame (25 lt model in polypropylene)
- Washable polyester filter
- Strong and practical closing hook system
- Anti-shock head
- Anti-splash switch
- 4 Sliding wheels
- Quick hose

Standard accessories included



**IMMEDIATE AVAILABILITY
SPARE PARTS AND SUPPORT
MADE IN ITALY**

CODE	Price List	HT	Tank Lt	Electric motors N°	Tension V	Depression mm/H2O	Air capacity m³/h	Dimensions cm	Weight Kg
N590001	240,00	190,00	25	1	230	2200	180	34 x 34 x 64h	6
N591001	368,00	250,00	35	1	230	2200	180	40 x 40 x 77h	10
N592001	353,00	285,00	50	1	230	2400	220	47 x 47 x 93h	20
N593001	667,00	540,00	70	2	230	2200	360	60 x 59 x 105h	22



INFRARED HEATERS

Infrared heaters for heating work areas. They use short wave radiation to heat objects and people, but not the surrounding air. They do not pollute or emit harmful substances.

Savings of over 60% compared to traditional heating systems because they only heat the required areas without heat dispersion. They can be equipped with timers, thermostats and presence detectors. They are ideally positioned on a wall or ceiling at a 45degree angle.



CODE	Price List	HT	Model	Power W	Heated area m²	Dimensions mm	Weight kg
N6060120	499,00	430,00	Single	2000	28	470 x 230 x 130	3,8
N6060240	975,00	895,00	Double	4000 (2 x 2000)	43	1040 x 230 x 130	6,9

LISTA

CABINETS WITH SHEET METAL DOORS

The doors close flush with the structure of the cabinet with an opening of about 115 degrees. Maximum stability and high capacity of shelves. Equipped with key lock.



CODE	P3053B01	P3053B02
Price List	760,50	760,50
HT	485,00	485,00
Dimension	mm 1000 x 500 x 1950h	1000 x 500 x 1950h
Shelves	n° 4 x 60kg	4 x 60kg
Colour	RAL 5012	RAL 7035
Load capacity	kg 500	500

LISTA

UNIVERSAL SHELVING L1006

Galvanized universal shelving. Quick and easy to assembly with an interlocking system for all elements and shelves, without the need for screws.



CODE	P630800	P6308A00
Price List	276,46	490,70
HT	240,00	165,00
Dimension	mm 1000 x 400 x 2000	1000 x 400 x 2000
Shelves	n° 5 x 160 Kg	5 x 160 Kg
Description	Universal shelving	Additional bay
Capacity	kg 2800	2800

LISTA

NC TABLE SUPPORT NC 36 X 27 E

NC table support with frame for housing in drawers for 3 tracks. Made of sheet steel.

24 pieces ISO-SK 40



CODE	P1049A01
Price List	327,50
HT	185,00
Dimension	mm 588 x 413 x 345
Supports	24 ISO-SK 40
Colour	RAL 5012



Professional industrial and workshop furniture



CABINETS WITH FULL EXTENSION DRAWERS 54 X 27 EH

Cabinets with full extension drawers (100%), capacity 50 kg, anti-tilt opening system, central locking.

€ 750,00
P21207C01



P21207C... composed of:

- 2 drawers, height 75 mm
- 1 drawer, height 100 mm
- 3 drawers, height 150 mm
- 1 drawer, height 200 mm

CODE	Drawers n°	Dimensions mm	Weight kg	Colour
P21207C01	7	1023 x 600 x 1000h	105	RAL 5012

CABINETS WITH HINGED DOORS

Cabinets with hinged doors and 2 shelves depth 500 mm (shelf capacity 120 Kg).



€ 245,00
P311050001

CODE	P311050001	
Dimension	mm	512 x 555 x 1000 h
Max. capacity	kg	800
Colour	Blu RAL 5012	

CABINETS WITH HINGED DOORS

Cabinets with hinged doors and 2 shelves depth 500 mm (shelf capacity 120 Kg).



€ 360,00
P3111100001

CODE	P3111100001	
Dimension	mm	1023 x 555 x 1000 h
Capacity	kg	800
Colour	Blu RAL 5012	

DOUBLE-SIDED TROLLEY WITH WOLF-MOUTH CONTAINERS

Container trolley equipped with 2 fixed non-marking synthetic rubber wheels Ø 125 mm and 2 swivel wheels with brakes, non-marking synthetic rubber wheels Ø 125 mm, set of 5 profiles with 90 containers size 1 and set of 4 profiles with 48 containers size 2. Maximum trolley load 300 kg.



€ 470,00
P41131



CODE	P41131	
Dimension	mm	1067 x 668 x 1357 h
With Containers	Yes	
Colour	Painted sheet metal, anthracite grey (RAL 7016)	

PLATFORM TROLLEYS

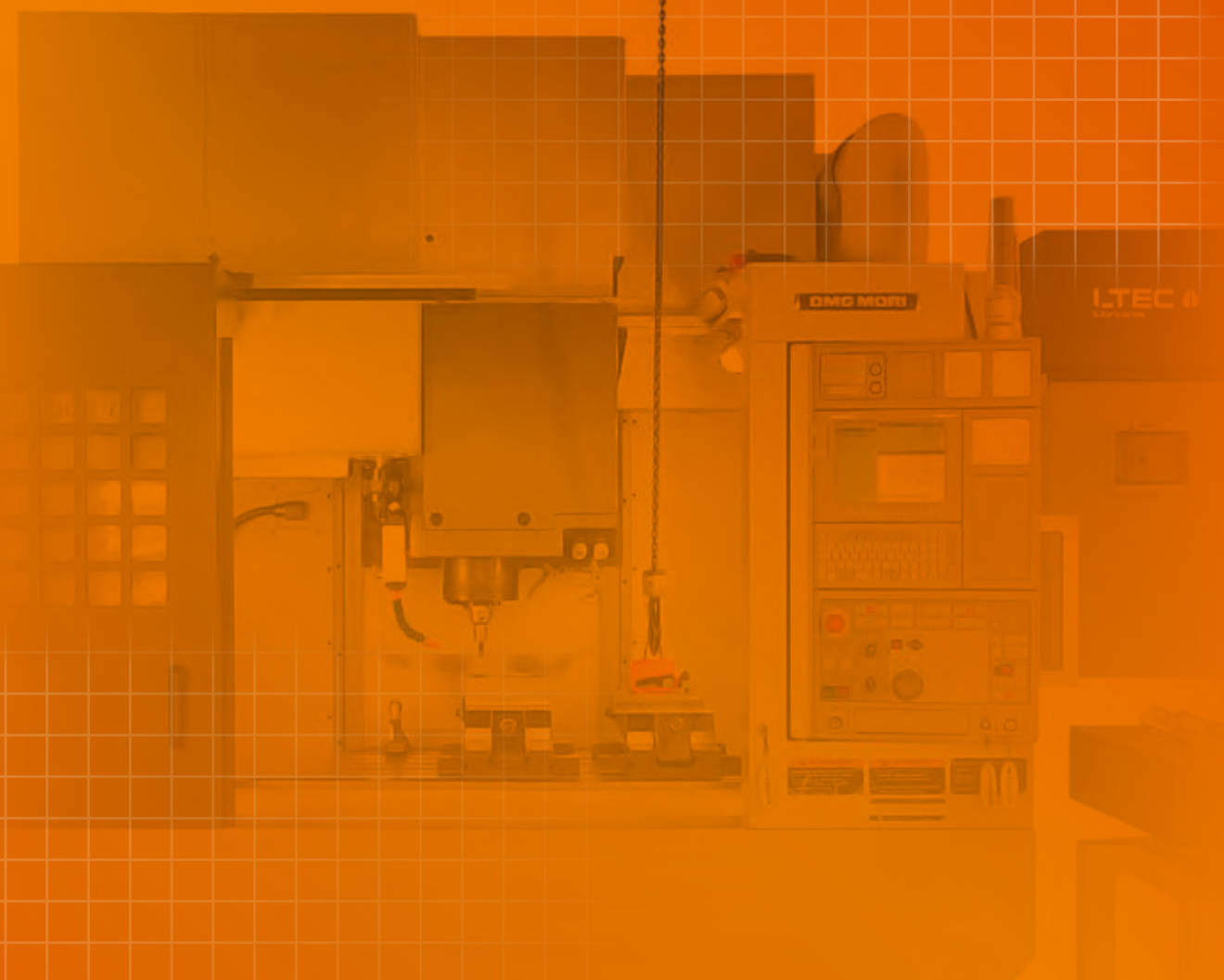
Platform trolley equipped with 2 fixed and 2 swivel rubber wheels Ø 125 mm. The Combi 4-wheel platform trolley makes it easier to transport heavy and medium-sized materials. The fixed-wheel platform trolley can be used both within the company and in warehouses to make it easier for customers and operators to handle purchases and different products.



€ 165,00
P5410101

CODE	P5410101	
Dimension	mm	1135 x 700 x 915 h
Capacity	kg	250
Weight	kg	22,96
Colour	Blue RAL 5012	

HANDLING





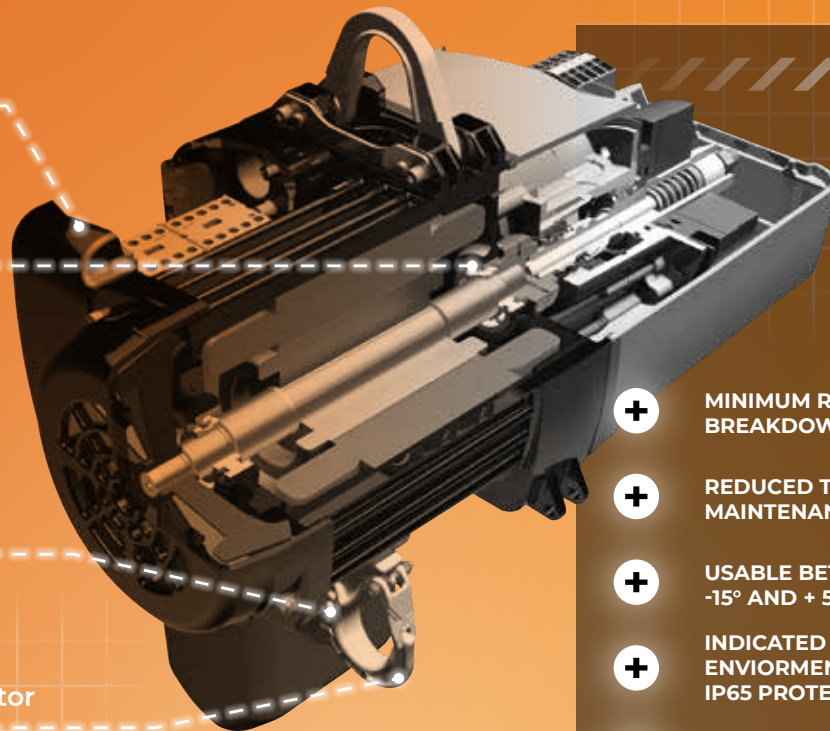
ELECTRIC CHAIN HOISTS

No sensitive electronics

Polygonal shaft-hub couplings

Wear-resistant DC spring brake

Chain with excellent safety factor



- +** MINIMUM RISK OF BREAKDOWNS
- +** REDUCED TIME AND MAINTENANCE COSTS
- +** USABLE BETWEEN -15° AND + 50°
- +** INDICATED FOR EXTERNAL ENVIRONMENT IP65 PROTECTION
- +** HIGH OPERATIONAL SAFETY



ELECTRIC CHAIN HOISTS GP

CODE	Price List	HT	Load capacity kg	Model	Class FEM (ISO)	Speed m/min	Nr. chain falls	Excursion m	Power kW	Intensity A	Weight kg
M00051251NF2	2.150,00	1.650,00	125	GP250/1NF	4m (M7)	8/2	1	3	0,72 / 0,18	2,8 / 1,7	24
M00052001NF2	2.150,00	1.650,00	200	GP250/1NF	3m (M6)	8/2	1	3	0,72 / 0,18	2,8 / 1,7	24
M00052501NF2	2.150,00	1.650,00	250	GP250/1NF	2m (M5)	8/2	1	3	0,72 / 0,18	2,8 / 1,7	24
M00055002NF	2.250,00	1.750,00	500	GP250/2NF	2m (M5)	4/1	2	3	0,72 / 0,18	2,8 / 1,7	25
M000510002NF	2.525,00	1.950,00	1000	GP500/2NF	2m (M5)	4/1	2	3	0,72 / 0,18	2,8 / 1,7	28
M000516002NF	3.600,00	2.700,00	1600	GP1000/2NF	3m (M6)	4/1	2	3	2,3 / 0,68	5,7 / 4,1	66
M000520002NF	3.600,00	2.700,00	2000	GP1000/2NF	2m (M5)	4/1	2	3	2,3 / 0,68	5,7 / 4,1	66



FREE

M0990DT
CYCLE COUNTERS FOR HOISTS

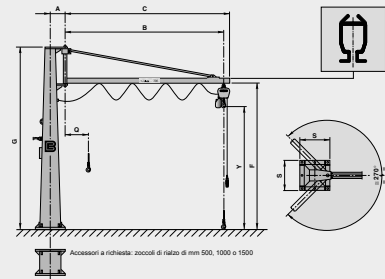


B·HANDLING 3

COLUMN-MOUNTED JIB CRANES
WITH GIS SYSTEM KB PROFILE ARM

FREE

1270078
CRANE CAPACITY SIGN 300X200



CODE	Price List	HT	LOAD CAPACITY kg	MODEL	ARM LENGHT C mm	EXTERNAL HOOK POSITION B mm	A mm	F mm	G* mm	Q mm	S mm	MAX HOOK HEIGHT FROM GROUND Y mm	FOUNDATION TYPE**	EXTENSION TYPE	PRESSURE BETWEEN COLUMN BASE AND FOUNDATION kg/cm²	ANCHORING TIE ROD TRACTION kg	Weight kg
M10102004000	2.245,00	1.650,00	200	SC 200/4000	4030	3865	305	3430	4025	570	560	2875	7	1A	5	1100	285
M10102005000	2.458,00	1.850,00	200	SC 200/5000	5030	4850	305	3425	4025	670	560	2865	8	1A	6	1360	320
M10102006000	2.828,00	2.000,00	200	SC 200/6000	6030	5850	305	3425	4025	680	560	2865	8	1A	7	1620	330
M10105004000	4.288,00	3.250,00	500	SC 500/4000	4035	3855	320	3495	4320	600	620	2910	12	2	10	1550	380
M10105005000	4.998,00	3.900,00	500	SC 500/5000	5045	4840	320	3445	4320	730	620	2845	13	2	12	1910	530
M10105006000	5.283,00	4.100,00	500	SC 500/6000	6045	5840	320	3445	4320	730	620	2845	14	2	14	2290	550
M101010004000	6.133,00	4.850,00	1000	SC1000/4000	4045	3720	320	3445	4320	765	620	2845	17	2	19	3100	500
M101010005000	6.298,00	4.950,00	1000	SC1000/5000	5045	4720	320	3445	4320	850	620	2845	18	2	24	3850	630
M101010006000	6.628,00	5.000,00	1000	SC1000/6000	6045	5720	320	3445	4320	950	620	2845	19	2	28	4600	680



C-HOOKS FOR REELS

Hooks for lifting and/or tilting from a horizontal and vertical position and vice versa

Features:

- Equipped with a grip handle
- Equipped with tilt locking system for safe transport

Advantages:

- Ideal solution for the safe handling of reels
- Durable and long-lasting equipment

Included:

- Use and maintenance manual



NEW

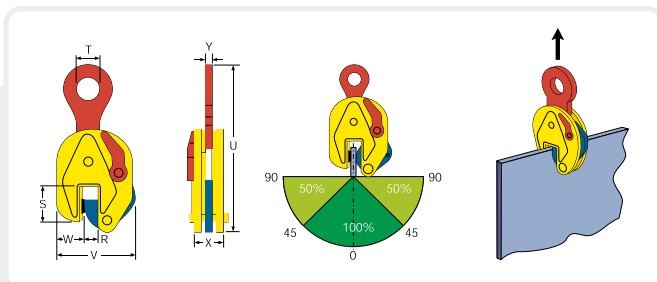
CODE	Price List	HT	Model	Load capacity kg	Reel width mm	Ø reel ring mm	Weight kg
M70590500	1.058,00	699,00	GC 05	500	50-120	400	5,5
M70591000	1.188,00	799,00	GC 1	1000	70-140	450	9
M70592000	1.798,00	1.199,00	GC 2	2000	100-200	500	16

VERTICAL LIFTING CLAMPS

Lifting clamps for handling sheet metal.

Features:

- Joint lifting arm with articulation
- Body and components made of high quality steel
- The extent and thickness of the lifting capacity and jaw openings engraved on the body
- Minimum lifting weight > 10% of the maximum capacity
- Suitable for vertical lifting and transport of sheet metal and steel structures in all horizontal, vertical and lateral positions



Advantages:

- The security mechanism ensures that it never releases the load when lifting or during transportation

Included:

- Use and maintenance manual

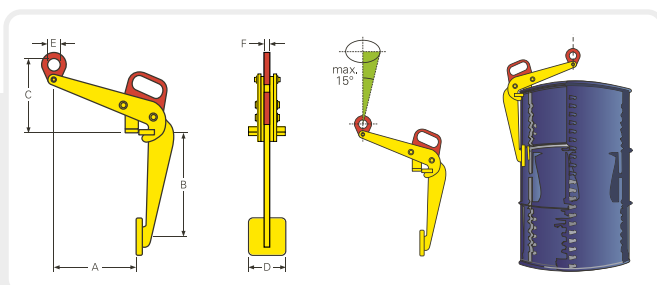
CODE	Price List	HT	Model	Load capacity kg	Opening mm	S mm	T mm	U mm	V mm	W mm	X mm	Y mm	Weight kg
M7010750	299,00	209,00	0.75 TS	750	0 - 13	47	30	202	100	37	37	10	1,7
M70101000	367,00	256,00	1 TSE	1.000	0 - 25	56	45	263	141	37	47	15	3,5
M70102000	442,00	288,00	2 TSE	2.000	0 - 35	78	64	336	183	56	56	16	7
M70104500	564,00	394,00	4.5 TSE	4.500	0 - 45	85	70	425	228	60	78	20	16

DRUMS LIFTING CLAMPS

Drum lifting clamps for transportation of the drums.

Features:

- Body and components made of high quality steel
- The extent, thickness of the lifting capacity and the jaw opening is engraved on the body
- Minimum lifting weight > 10% of the maximum capacity
- Suitable for vertical lifting and transport in complete safety of even full drums



Included:

- Use and maintenance manual

CODE	Price List	HT	Model	Load capacity kg	Opening mm	A mm	B mm	C max mm	D mm	E mm	F mm	Weight kg
M7055600	296,00	210,00	TVKH	600	0 - 25	305	434	331	100	50	10	7

B·HANDLING 3



Handling system

They use neodymium a material three times better than ferromagnete

- The V-Shaped plate make them fit to handle both flat (also narrow profile plates and bars) and round shape items (tubes and rods)

- Stop block treated with manganese phosphate coating

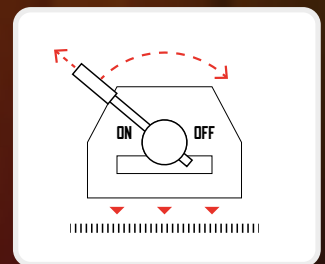
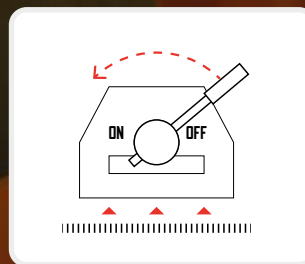
- Tested capacity of lifting 3 times more than nominal

- Actuation lever of the magnetic field with safety device to prevent improper or accidental disconnections



- + **Very light, compact and easy to use**
- + **The magnetic power remains absolutely unchanged overtime**
- + **Elimination of the risk of damaging the load with other chains or slings**
- + **Often a single operator is sufficient to lift and move heavy or bulky loads**
- + **Lower lifting and handling times thanks to the immediate seizure of the cargo by the magnet**

HOW DOES IT WORK



LIFTING MAGNETS - NEO

CODE	Price List	HT	Model	Lifting pow. plate surf. kg	Lifting pow. round surf. kg	Ø min sollevabile mm	Ø max sollevabile mm	Eyebolt height mm	Length x width mm	Weight kg
M8020125	545,00	330,00	NEO 125	125	40	50	100	110	93 x 60	3
M8020250	733,00	460,00	NEO 250	250	125	60	200	164	152 x 100	10
M8020500	4.094,00	680,00	NEO 500	500	250	65	270	164	246 x 120	20
M80201000	4.928,00	1.200,00	NEO 1000	1000	500	100	300	216	305 x 140	40
M80202000	3.670,00	2.300,00	NEO 2000	2000	1000	150	350	251	480 x 165	90

MAX LOAD CAPACITY ACCORDING TO TYPE OF SURFACE AND SINGLE PIECE DIMENSIONS

M8020125



Nominal workload:			
- for plates (kg)	125	Weight (kg)	3
- for round (kg)	40	Length (mm)	93
- Ø min/max (mm)	50/100	Width (mm)	60
Testload (kg)*	400	Crown height (mm)	110

Plate Thickness (S) (mm)	Clean and Smooth plane surface $\Delta < 0,1$ mm		Rusty and hot rolled surface $\Delta < 0,1 \div 0,3$ mm		Irregular and rough surface $\Delta < 0,3 \div 0,5$ mm	
	L x W max (mm)	Workload (kg)	L x W max (mm)	Workload (kg)	L x W max (mm)	Workload max (kg)
≥ 25	-	125	-	75	-	60
15	1900 x 500	115	1100 x 500	70	900 x 500	55
10	2300 x 500	110	1500 x 500	65	1200 x 500	50
4	2500 x 500	45	2300 x 500	40	1700 x 500	30
2	1500 x 500	15	1300 x 500	13	1200 x 500	12
Tubes ϕ (mm) 50-100	2500	40	1700	28	1500	24

NB: Plates L and W must be at least 200 x 200 mm
* Tested with a mild steel plate, rectified, 50mm

M8020250



Nominal workload:			
- for plates (kg)	250	Weight (kg)	10
- for round (kg)	125	Length (mm)	152
- Ø min/max (mm)	60/200	Width (mm)	100
Testload (kg)*	800	Crown height (mm)	164

Plate Thickness (S) (mm)	Clean and Smooth plane surface $\Delta < 0,1$ mm		Rusty and hot rolled surface $\Delta < 0,1 \div 0,3$ mm		Irregular and rough surface $\Delta < 0,3 \div 0,5$ mm	
	L x W max (mm)	Workload (kg)	L x W max (mm)	Workload (kg)	L x W max (mm)	Workload max (kg)
≥ 30	-	250	-	170	-	105
15	1750 x 1000	205	1250 x 1000	150	1000 x 800	90
10	2200 x 1000	170	1650 x 1000	130	1100 x 1000	85
6	2100 x 1000	100	1650 x 1000	80	1300 x 1000	60
4	1600 x 1000	50	1400 x 1000	45	1150 x 1000	36
Tubes ϕ (mm) 60-200	3500	125	3000	100	2500	70

NB: Plates L and W must be at least 300 x 300 mm
* Tested with a mild steel plate, rectified, 50mm

M8020500



Nominal workload:			
- for plates (kg)	500	Weight (kg)	20
- superfici tonde (kg)	250	Length (mm)	246
- Ø min/max (mm)	65/270	Width (mm)	120
Testload (kg)*	1600	Crown height (mm)	164

Plate Thickness (S) (mm)	Clean and Smooth plane surface $\Delta < 0,1$ mm		Rusty and hot rolled surface $\Delta < 0,1 \div 0,3$ mm		Irregular and rough surface $\Delta < 0,3 \div 0,5$ mm	
	L x W max (mm)	Workload (kg)	L x W max (mm)	Workload (kg)	L x W max (mm)	Workload max (kg)
≥ 40	-	500	-	380	-	225
20	1800 x 1500	425	1650 x 1250	320	1400 x 1000	220
15	2250 x 1500	400	2050 x 1250	300	1750 x 1000	205
10	2500 x 1500	270	2350 x 1250	200	2150 x 1000	165
8	2300 x 1500	195	2250 x 1250	160	2150 x 1000	125
6	2000 x 1500	125	2000 x 1250	100	2000 x 1000	80
Tubes ϕ (mm) 65-270	4000	250	3500	200	3000	150

NB: Plates L and W must be at least 400 x 400 mm
* Tested with a mild steel plate, rectified, 50mm

M80201000



Nominal workload:			
- for plates (kg)	1000	Weight (kg)	40
- for round (kg)	500	Length (mm)	305
- Ø min/max (mm)	100/300	Width (mm)	140
Testload (kg)*	3200	Crown height (mm)	216

Plate Thickness (S) (mm)	Clean and Smooth plane surface $\Delta < 0,1$ mm		Rusty and hot rolled surface $\Delta < 0,1 \div 0,3$ mm		Irregular and rough surface $\Delta < 0,3 \div 0,5$ mm	
	L x W max (mm)	Workload (kg)	L x W max (mm)	Workload (kg)	L x W max (mm)	Workload max (kg)
≥ 60	-	1000	-	845	-	650
50	250 x 1500	860	2000 x 1500	730	1900 x 1250	565
30	2850 x 1500	830	2400 x 1500	705	2250 x 1250	550
20	3200 x 1500	745	2750 x 1500	640	2600 x 1250	510
15	3300 x 1500	500	2900 x 1500	445	2800 x 1250	380
10	2750 x 1500	265	2550 x 1500	240	2650 x 1250	200
Tubes ϕ (mm) 100-300	4500	500	4000	400	3500	300

NB: Plates L and W must be at least 500 x 500 mm
* Tested with a mild steel plate, rectified, 50mm

M80202000



Nominal workload:			
- for plates (kg)	2000	Weight (kg)	90
- for round (kg)	1000	Length (mm)	480
- Ø min/max (mm)	150/350	Width (mm)	165
Testload (kg)*	6000	Crown height (mm)	251

Plate Thickness (S) (mm)	Clean and Smooth plane surface $\Delta < 0,1$ mm		Rusty and hot rolled surface $\Delta < 0,1 \div 0,3$ mm		Irregular and rough surface $\Delta < 0,3 \div 0,5$ mm	
	L x W max (mm)	Workload (kg)	L x W max (mm)	Workload (kg)	L x W max (mm)	Workload max (kg)
≥ 80	-	2000	-	1650	-	1300
50	3250 x 1500	1950	2500 x 1500	1600	2000 x 1500	1250
30	3500 x 1500	1350	3000 x 1500	1150	2000 x 1500	1000
20	3500 x 2000	1100	3000 x 2000	1000	2000 x 2000	900
15	3000 x 1500	650	3000 x 1500	600	2000 x 1500	550
Tubes ϕ (mm) 150-350	5000	1000	4500	900	4000	800

NB: Plates L and W must be at least 800 x 800 mm
* Tested with a mild steel plate, rectified, 50mm

B-HANDLING 3

HAND PALLET TRUCKS

Features::

- Sturdy painted steel structure
- Switch lever featuring good ergonomic grip for easy operation
- 3-position control: down - neutral - up
- Cast iron wheels, thermoplastic polymer coating

Supplied with:

- Instruction manual of use and maintenance
- Handlebar is delivered as not assembled

€ 365,00

M90102500



Load capacity kg	2500
Fork Dimension mm	1150 x 540
Total length mm	1550
Lift h mm	85 - 200
Steering angle	220°
Total height mm	1230
Rolls dimensions mm	82 x 70 double
Weight kg	72



ELECTRIC PALLET TRUCKS EX15L

Pallet trucks with electric traction and lifting, the ideal solution for light logistics operations

- Easy to use, compact dimensions and low weight
- Powerful removable lithium battery
- Emergency button and electric brake as standard
- Easy and fast handling of pallets
- Fast recharging thanks to the removable and replaceable lithium battery

€ 2.349,00

M91221500



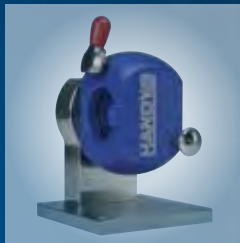
Model	EX15L
Load capacity kg	1500
Fork Dimension (mm)	1150-560
Lift height (mm)	115
Translation speed (Km/h)	4,5
Weight kg	120

TOP TIPS

+



C4715
p 22



C4525
p 21



P1049
p 55



A4U40
p 6



D7705
p 31

+



A0040
p 12



A2103
p 15



H0045
p 33



M7055
p 61



P6803
p 35

+



J6125
p 51



N6055
p 50



G0207
p 46



K2100
p 53

+



N3200
p 49



N5900
p 54



K2346
p 53

+



K1640
p 52



N6060
p 54



P5410
p 57



M9010
p 64



A+B
Industrial Tools Company



23_028_HT_2023_OTT_EN



THE PLACE TO BE FOR THE METAL INDUSTRY

De Tonne 89-91 • Industriezone 5 • 9800 Deinze
T 09 386 69 31 • F 09 380 38 41
info@vamatec.be visit us online www.vamatec.be