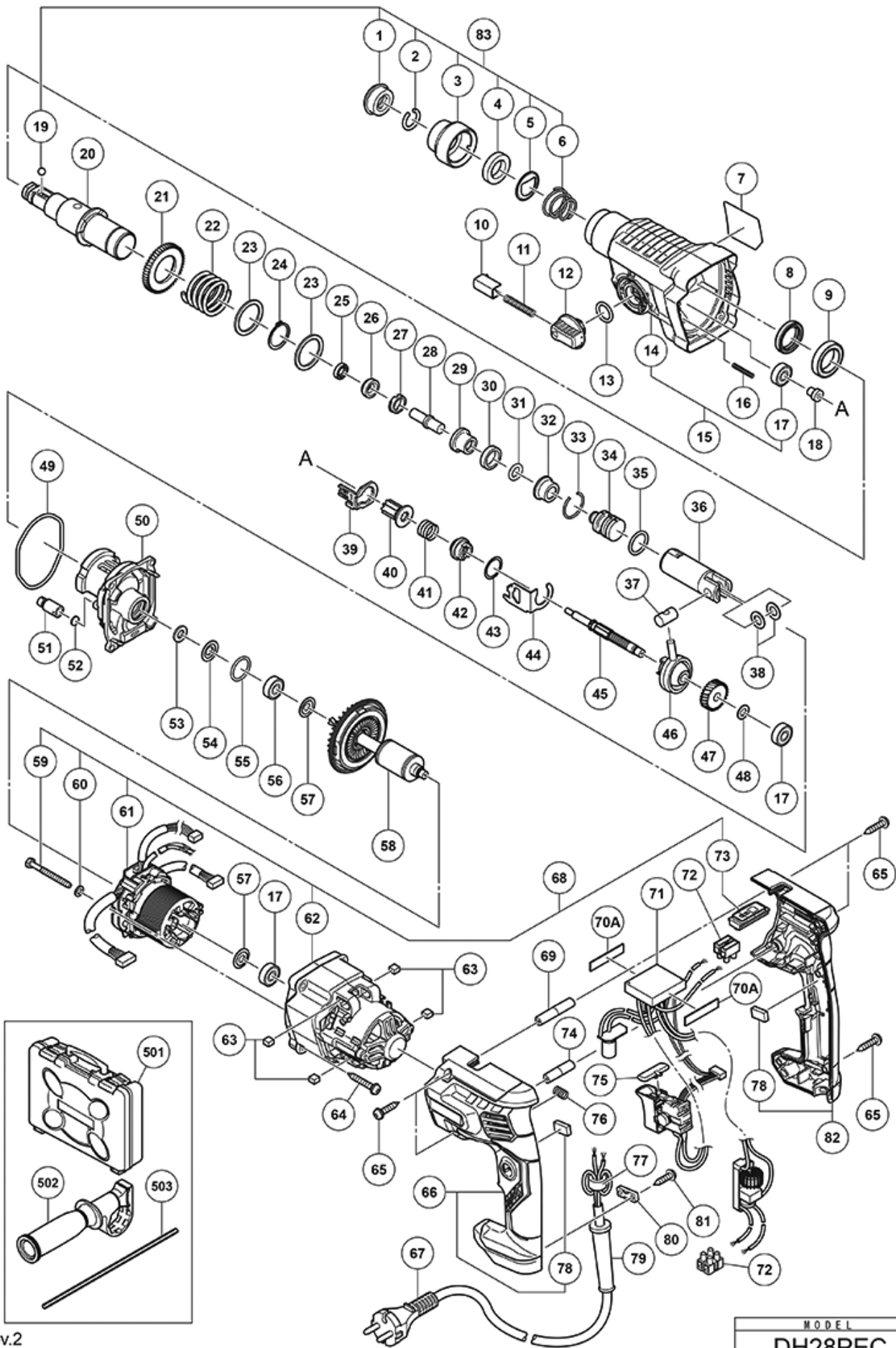


nÂ°	Artikel	Aantal gebruikt
1	306345 FRONT CAP	1
2	306340 STOPPER RING	1
3	374436 GRIP NEW	1
4	374437 BALL HOLDER NEW	1
5	374435 HOLDER PLATE NEW	1
6	322812 HOLDER SPRING	1
8	335259 OIL SEAL	1
9	6805BB BALL BEARING 6805 NEW	1
10	322789 PUSHING BUTTON	1
11	317223 PUSHING SPRING	1
12	334011 CHANGE LEVER	1
13	878885 O-RING (S-18)	1
14	374425 GEAR COVER NEW	1
15	375021 GEAR COVER ASS'Y NEW	1
16	335800 SPRING (E)	1
17	608VVM BALL BEARING 608VVC2PS2L	3
18	374422 SHAFT HOLDER (B) NEW	1
19	335300 STEEL BALL D7.0 (10 PCS)	1
20	374426 CYLINDER NEW	1
21	335265 SECOND GEAR	1
22	374430 SPRING (B) NEW	1
23	301679 WASHER (A)	2
25	335262 OIL SEAL (A)	1
26	374431 HAMMER HOLDER (B) NEW	1
27	374427 HOLDER SLEEVE NEW	1
28	374432 SECOND HAMMER NEW	1
29	374429 HAMMER HOLDER (A) NEW	1
30	322805 DAMPER (A)	1
31	322808 O-RING (C)	1
32	324524 DAMPER HOLDER (OLD 322806)	1
33	322807 STOPPER RING	1
34	374443 STRIKER NEW	1
35	372816 O-RING NEW	1
36	372817 PISTON NEW	1
37	335793 PISTON PIN	1
38	335794 PISTON WASHER	2
39	374434 LOCK PLATE NEW	1
40	374440 SECOND PINION NEW	1

nÂ°	Artikel	Aantal gebruikt
41	323182 CLUTCH SPRING	1
42	375022 CLUTCH NEW	1
43	331315 WASHER	1
44	374439 CHANGE PLATE (C) NEW	1
45	374438 SECOND SHAFT NEW	1
46	335249	1
47	374441 FIRST GEAR NEW	1
48	374442 BEARING WASHER NEW	1
49	335245 O-RING D72.2	1
50	375369 INNER COVER NEW	1
51	334008 AIR CAP	1
52	324543 FELT PACKING (A)	1
53	322816 FELT PACKING	1
54	322818 PACKING WASHER	1
55	876796 O-RING (P-22)	1
56	608DDM BALL BEARING 608DDMC2EPS2S	1
57	982631 WASHER (A)	2
58	361104 ROTOR DH28PEC NEW	1
59	374450 HEX. TAPPING SCREW D6 NEW	2
60	323210 BOLT WASHER M4 (BLACK)	2
61	341026 STATOR PCB SET	1
61	341027 STATOR PCB SET DH28PEC NEW	1
62	375585 HOUSING NEW	1
63	374448 HANDLE DAMPER NEW	4
64	301654 TAPPING SCREW D5X35 (W/FLANGE)	4
65	301653 TAPPING SCREW (W/FLANGE) D4X20 (BLACK)	8
66	375579 HANDLE (A) ASS'Y NEW	1
67	500446Z CORD FOR GBR 230V	1
67	500424Z @ CORD FOR SINZ KUW	1
67	500465Z CORD 4M 2 X 1.0 H07RN-F W/PLUG 16A CEE FORM 2P+E 110 VOLT	1
67	500390Z CORD 5M 2 X 1.5 FOR HOL (NEW 714520)	1
67	500408Z CORD	1
68	375583 MOTOR ASS'Y NEW	1
68	375584 MOTOR ASS'Y 110 VOLT NEW	1
69	374445 HANDLE SHAFT (A) NEW	1
70A	373635 RUBBER SHEET NEW	2
71	374452 DC FILTER SW PCB ASS'Y NEW	1
71	374451 DC FILTER SWITCH PCB	1

nÂ°	Artikel	Aantal gebruikt
72	958308Z PILLAR TERMINAL (A)	2
73	375368 PANEL NEW	1
74	374446 HANDLE SHAFT (B) NEW	1
75	322853 PUSHING BUTTON	1
76	374421 HANDLE SPRING NEW	1
77	334379 FERRITE CORE	1
78	375581 SUPPORT (B) NEW	2
79	953327 CORD ARMOR D8.8	1
80	937631 CORD CLIP	1
81	984750 TAPPING SCREW (W/FLANGE) D4X16	2
82	375580 HANDLE (B) ASS'Y NEW	1
83	375363 GRIP SET NEW	1
501	374320 PLASTIC CARRYING CASE NEW	1
502	374447 SIDE HANDLE ASS'Y NEW	1
503	303709 DEPTH GAUGE	1
601	306885 DUST COLLECTOR (B) ASS'Y	1
602	986802 DUST COLLECTOR ASS'Y	1
603	986803 @ DUST COVER	1
604	986804 @ SEAL COVER NEW	1
605	948310 RETAINING RING FOR D30 SHAFT	1
606	958063 @ WASHER (OLD 958063P)	1
607	959150 STEEL BALL D6.35 (10 PCS.)	19
608	986805 @ OUTER RACE NEW	1
609	986806 SOCKET	1
610	306910 SOCKET ADAPTOR (B)	1
611	971787 DUST CUP	1
612	931844 STOPPER	1
632	335781 GREASE FOR ROTARY HAMMER (500G)	1
633	335782 GREASE FOR ROTARY HAMMER (60G)	1



Rev.2  
8.7.2019

MODEL  
DH28PEC