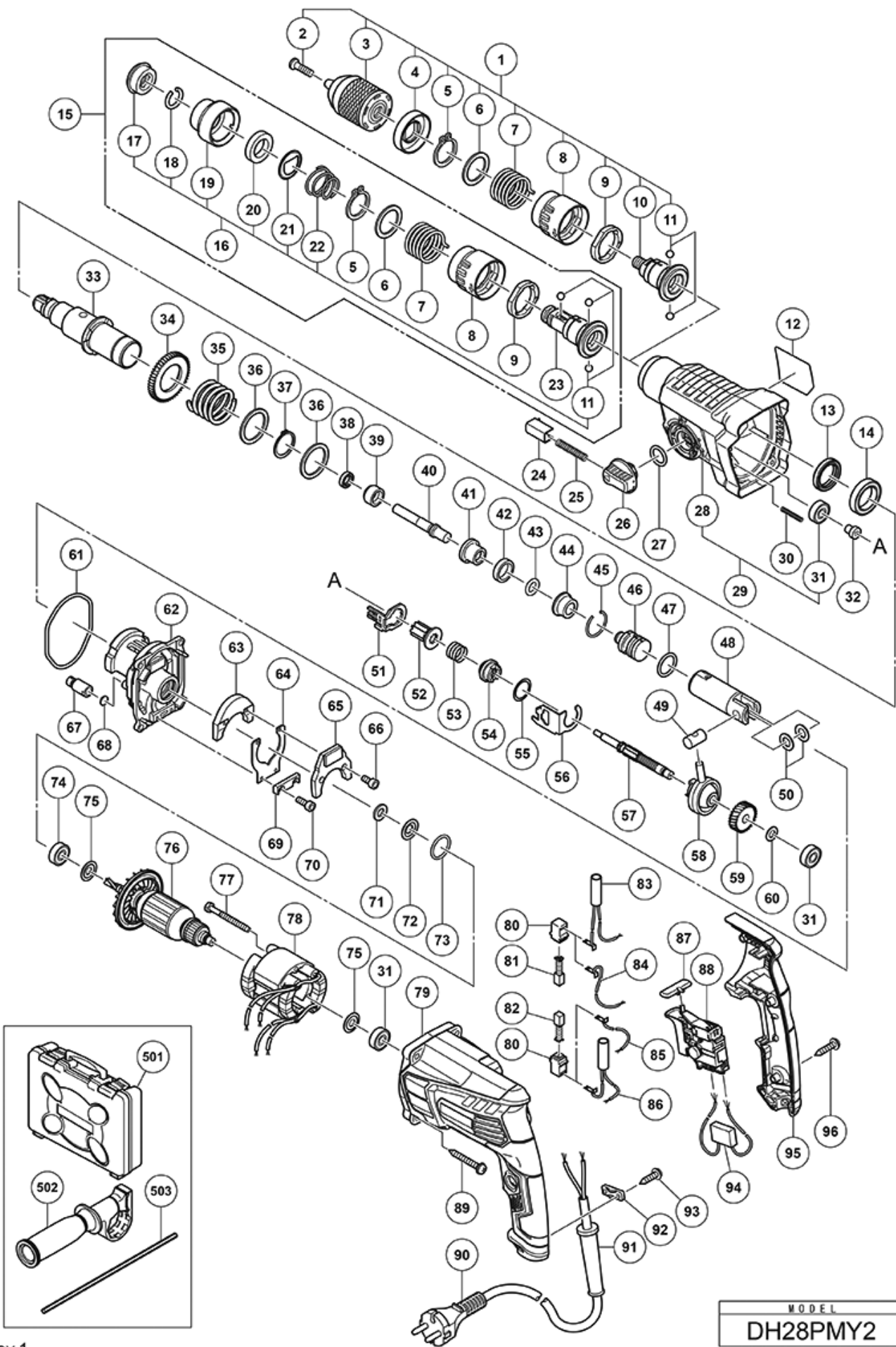


nÂ°	Artikel	Aantal gebruikt
1	375012 CHUCK HOLDER (A) ASS'Y NEW	1
2	995344 FLAT HD.SCREW M6X25 (A) (LEFT HAND) (NEW 744087)	1
3	323898 DRILL CHUCK 13VLRN-N (W/O CHUCK WRENCH)	1
4	326527 STOPPER	1
5	965469 RETAINING RING FOR D25 SHAFT	2
6	326520 WASHER (B)	2
7	326519 SPRING	2
8	375013 LOCK GRIP NEW	2
9	326801 LOCK RING (OLD 326661)	2
10	375011 CHUCK HOLDER (A) NEW	1
11	335300 STEEL BALL D7.0 (10 PCS)	5
12	NAME PLATE	1
13	335259 OIL SEAL	1
14	6805BB BALL BEARING 6805 NEW	1
15	375010 BIT HOLDER (A) ASS'Y NEW	1
16	375363 GRIP SET NEW	1
17	306345 FRONT CAP	1
18	306340 STOPPER RING	1
19	374436 GRIP NEW	1
20	374437 BALL HOLDER NEW	1
21	374435 HOLDER PLATE NEW	1
22	322812 HOLDER SPRING	1
23	375009 BIT HOLDER (A) NEW	1
24	322789 PUSHING BUTTON	1
25	317223 PUSHING SPRING	1
26	334011 CHANGE LEVER	1
27	878885 O-RING (S-18)	1
28	375005 GEAR COVER NEW	1
29	375006 GEAR COVER ASS'Y NEW	1
30	335800 SPRING (E)	1
31	608VVM BALL BEARING 608VVC2PS2L	3
32	374422 SHAFT HOLDER (B) NEW	1
33	375007 CYLINDER NEW	1
34	335265 SECOND GEAR	1
35	374430 SPRING (B) NEW	1
36	301679 WASHER (A)	2
37	948310 RETAINING RING FOR D30 SHAFT	1
38	335262 OIL SEAL (A)	1

nÂ°	Artikel	Aantal gebruikt
39	375014 HAMMER HOLDER (D) NEW	1
40	375008 SECOND HAMMER NEW	1
41	374429 HAMMER HOLDER (A) NEW	1
42	322805 DAMPER (A)	1
43	322808 O-RING (C)	1
44	324524 DAMPER HOLDER (OLD 322806)	1
45	322807 STOPPER RING	1
46	374443 STRIKER NEW	1
47	372816 O-RING NEW	1
48	372817 PISTON NEW	1
49	335793 PISTON PIN	1
50	335794 PISTON WASHER	2
51	374434 LOCK PLATE NEW	1
52	374440 SECOND PINION NEW	1
53	323182 CLUTCH SPRING	1
54	375022 CLUTCH NEW	1
55	331315 WASHER	1
56	374439 CHANGE PLATE (C) NEW	1
57	374438 SECOND SHAFT NEW	1
58	335249	1
59	374441 FIRST GEAR NEW	1
60	374442 BEARING WASHER NEW	1
61	335245 O-RING D72.2	1
62	374625 INNER COVER NEW	1
63	374627 WEIGHT (A) NEW	1
64	335282	1
65	374628 WEIGHT (B) NEW	1
66	325241 SEAL LOCK HEX. SOCKET HD. BOLT M3X8	2
67	334008 AIR CAP	1
68	324543 FELT PACKING (A)	1
69	374626 SPRING HOLDER NEW	1
70	983162 SEAL LOCK HEX. SOCKET HD. BOLT M4X12	2
71	322816 FELT PACKING	1
72	322818 PACKING WASHER	1
73	876796 O-RING (P-22)	1
74	608DDM BALL BEARING 608DDMC2EPS2S	1
75	982631 WASHER (A)	2
76	361108E ARMATURE (B) 220-230 VOLT NEW	1

nÂ°	Artikel	Aantal gebruikt
77	981824 HEX.HD. TAPPING SCREW D4X45	2
78	341028K STATOR (A) 220-230 VOLT NEW	1
79	374622 HOUSING (B) NEW	1
80	955203 BRUSH HOLDER	2
81	999041 CARBON BRUSH (1 PAIR)	1
82	999072 CARBON BRUSH A.S. TYPE (OLD 999080)	1
83	374615 CHOKE COIL (BROWN) NEW	1
84	374613 INTERNAL WIRE (BROWN)	1
85	374612 INTERNAL WIRE (BLUE)	1
86	374614 CHOKE COIL (BLUE) NEW	1
87	322853 PUSHING BUTTON	1
88	374610 SWITCH 220-240 VOLT NEW	1
89	301654 TAPPING SCREW D5X35 (W/FLANGE)	4
90	500424Z @ CORD FOR SINZ KUW	1
90	500440Z CORD 5M 2 X 1,0 W/PLUG 13A/250V FOR GBR	1
90	500390Z CORD 5M 2 X 1.5 FOR HOL (NEW 714520)	1
90	500239Z @ CORD FOR THA	1
91	953327 CORD ARMOR D8.8	1
91	938051 CORD ARMOR D10.1	1
92	937631 CORD CLIP	1
93	984750 TAPPING SCREW (W/FLANGE) D4X16	2
94	930039 NOISE SUPPRESSOR	1
95	374623 HANDLE COVER (B) NEW	1
96	301653 TAPPING SCREW (W/FLANGE) D4X20 (BLACK)	3
501	375015 PLASTIC CARRYING CASE NEW	1
502	374447 SIDE HANDLE ASS'Y NEW	1
503	303709 DEPTH GAUGE	1
601	306885 DUST COLLECTOR (B) ASS'Y	1
602	986802 DUST COLLECTOR ASS'Y	1
603	986803 @ DUST COVER	1
604	986804 @ SEAL COVER NEW	1
606	958063 @ WASHER (OLD 958063P)	1
607	959150 STEEL BALL D6.35 (10 PCS.)	19
608	986805 @ OUTER RACE NEW	1
609	986806 SOCKET	1
610	306910 SOCKET ADAPTOR (B)	1
611	971787 DUST CUP	1
612	931844 STOPPER	1

nÂ°	Artikel	Aantal gebruikt
613	321814 DRILL CHUCK 13VLRB-D	1
614	331966 FLAT HD. SCREW (LEFT HAND) M6X20	1
615	321813 DRILL CHUCK 13VLD-D	1
618	971794 ANCHOR SETTING ADAPTER A W1/4" (MANUAL)	1
619	971795 ANCHOR SETTING ADAPTER A W5/16" (MANUAL)	1
620	971796 ANCHOR SETTING ADAPTER A W3/8" (MANUAL)	1
621	971797 ANCHOR SETTING ADAPTER A W1/2" (MANUAL)	1
622	971798 ANCHOR SETTING ADAPTER A W5/8" (MANUAL)	1
623	971799 ANCHOR SETTING ADAPTER B W1/4" (MANUAL)	1
624	971800 ANCHOR SETTING ADAPTER B W5/16" (MANUAL)	1
625	971801 ANCHOR SETTING ADAPTER B W3/8" (MANUAL)	1
626	971802 ANCHOR SETTING ADAPTER B W1/2" (MANUAL)	1
627	971803 ANCHOR SETTING ADAPTER B W5/8" (MANUAL)	1
628	320859 SYRINGE (BLOW-OUT BULB TYPE)	1
629	944477 COTTER	1
630	982684 CENTER PIN (A) 109L FOR CORE BIT D32-38	1
631	982685 CENTER PIN (B) 104L FOR CORE BIT D45-90	1
632	335781 GREASE FOR ROTARY HAMMER (500G)	1
633	335782 GREASE FOR ROTARY HAMMER (60G)	1



Rev.1