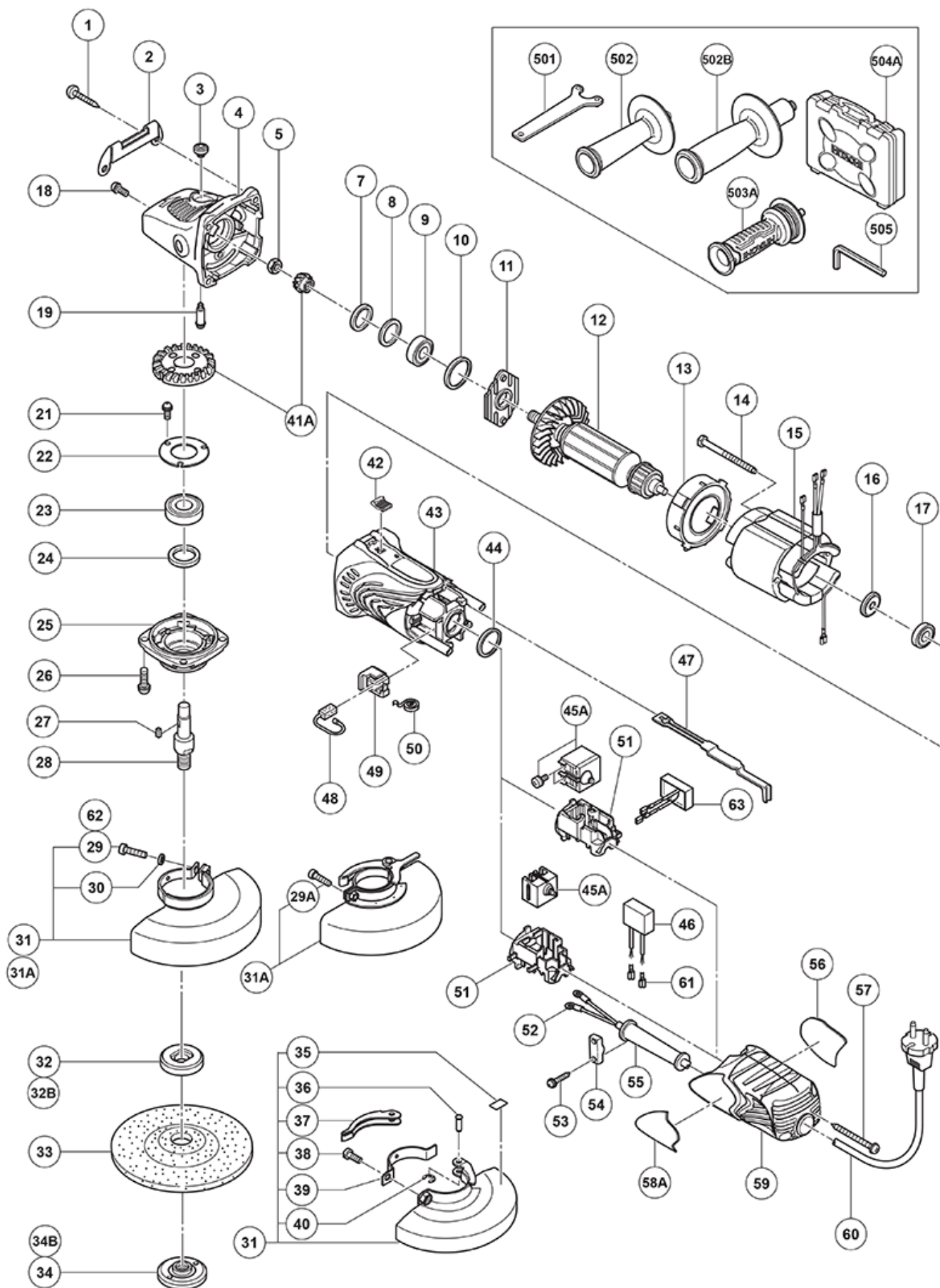


| nÂ° | Artikel | Aantal gebruikt |
|------|---|-----------------|
| *60 | 500234Z CORD 5M 2 X 1.0 FOR INA,SUR,MLT H05VV-F (NEW 714500) | 1 |
| *60 | 500435Z CORD 2,5M 2 X 1.0 H05VV-F W/PLUG 13A/250V GBR | 1 |
| *60 | 500447Z CORD 2,5M 2 X 1.0 H05VV-F (OLD 500395Z) | 1 |
| *60 | 500439Z CORD FOR AUS (OLD 500226Z/500411Z) | 1 |
| *60 | 500461Z CORD 3M 2 X 1,0 H05VV-F W/PLUG 16A CEE FORM 2P+E FOR GBR | 1 |
| *46 | 930039 NOISE SUPPRESSOR | 1 |
| *60 | 500240Z CORD FOR USA/CAN | 1 |
| *60 | 500247Z CORD (NEW 714500) | 1 |
| *60 | 500423Z @ CORD 2,5M 2 X 1.0 H05VV-F W/PLUG 13A/250V (OLD 500223Z) | 1 |
| *602 | 938318 WASHER NUT | 1 |
| *602 | 937826Z WASHER NUT | 1 |
| *601 | 938317 RUBBER PAD | 1 |
| *601 | 937825Z RUBBER PAD | 1 |
| *502 | 956633 SIDE HANDLE | 1 |
| *12 | 360734C ARMATURE 110 VOLT | 1 |
| *46 | 994273 NOISE SUPPRESSOR | 1 |
| *502 | 994322 SIDE HANDLE | 1 |
| *15 | 340645D STATOR 120V | 1 |
| *15 | 340645F STATOR 240V | 1 |
| *15 | 340645C STATOR 110 VOLT | 1 |
| *15 | 340645E STATOR 230 VOLT | 1 |
| *12 | 360734U ARMATURE ASS'Y 120V | 1 |
| *12 | 360734E ARMATURE 230-240 VOLT | 1 |
| *45A | 319319 PUSHING BUTTON SWITCH | 1 |
| *15 | 340932E STATOR 230 VOLT NEW | 1 |
| *34 | 937923P WHEEL NUT 5/8"-11UNC | 1 |
| *45A | 329057 PUSHING BUTTON SWITCH | 1 |
| *28 | 994302 SPINDLE (B) | 1 |
| *32 | 937817Z WHEEL WASHER | 1 |
| *31 | 320192 WHEEL GUARD ASS'Y (OLD 994321/23) | 1 |
| *28 | 994301 SPINDLE (A) | 1 |
| *31 | 311742 WHEEL GUARD ASS'Y | 1 |
| 1 | 320523 TAPPING SCREW D5X25 BLACK | 4 |
| 2 | 325053 GUARD PLATE | 1 |
| 3 | 301944 PUSHING BUTTON | 1 |
| 4 | 321737 GEAR COVER ASS'Y | 1 |
| 5 | 949558 NUT M8 (10 PCS.) | 1 |
| 7 | 308543 SEAL RING (A) | 1 |

| nÂ° | Artikel | Aantal gebruikt |
|-----|--|-----------------|
| 8 | 980866 WASHER (C) | 1 |
| 9 | 629T12 BALL BEARING 629T12DDC3PS2-L | 1 |
| 10 | 957754 RUBBER RING (OLD 994299) | 1 |
| 11 | 321734 BEARING COVER | 1 |
| 13 | 321732 FAN GUIDE | 1 |
| 14 | 982021 HEX. HD. TAPPING SCREW D4X70 | 2 |
| 16 | 315877 DUST SEAL | 1 |
| 17 | 608VVM BALL BEARING 608VVC2PS2L | 1 |
| 18 | 303255 SEAL LOCK SCREW M4X10 (W/SP WASHER) | 2 |
| 19 | 301943 LOCK PIN | 1 |
| 21 | 991207 SEAL LOCK SCREW M4X8 (W/SP WASHER) | 3 |
| 22 | 936680 BEARING COVER (B) | 1 |
| 23 | 6201DD BALL BEARING 6201DDUCMAV2S | 1 |
| 24 | 308546 FELT PACKING | 1 |
| 25 | 308545 PACKING GLAND | 1 |
| 26 | 307046 SEAL LOCK SCREW M5X16 (W/WASHER) | 4 |
| 27 | 944109 FEATHER KEY 3X3X8 | 1 |
| 29A | 316107 HEX. HOLE BOLT M5X20 (W/WASHERS) (OLD 900162-05020) | 1 |
| 29 | 949241 MACHINE SCREW M5X20 (10 PCS.) | 1 |
| 30 | 949454 SPRING WASHER M5 (10 PCS) | 1 |
| 31A | 337232 WHEEL GUARD ASS'Y (TOOLLESS TYPE) | 1 |
| 31A | 333537 WHEEL GUARD ASS'Y | 1 |
| 32B | 334456 WHEEL WASHER (C) (OLD 937928Z) | 1 |
| 33 | 316822 D. C. WHEELS 125MM A36Q (25 PCS.) | 1 |
| 34B | 339580 WHEEL NUT M14 NEW | 1 |
| 34B | 339579 WHEEL NUT M14 NEW | 1 |
| 35 | 311492 LABEL | 1 |
| 36 | 311744 SET PIN | 1 |
| 37 | 311743 LEVER | 1 |
| 38 | 880734 MACHINE SCREW M5X25 BLACK | 1 |
| 39 | 311491 SET PIECE (B) | 1 |
| 40 | 874759 RETAINING RING (E-TYPE) FOR D2.5 | 1 |
| 41A | 329054 GEAR AND PINION SET (OLD 321735) | 1 |
| 42 | 314428 SLIDE KNOB | 1 |
| 43 | 325050 HOUSING | 1 |
| 44 | 321733 RUBBER RING | 1 |
| 45A | 370015 PUSHING BUTTON SWITCH NEW | 1 |
| 47 | 370014 SLIDE BAR NEW | 1 |

| nÂ° | Artikel | Aantal gebruikt |
|------|---|-----------------|
| 47 | 325051 SLIDE BAR | 1 |
| 48 | 999088 CARBON BRUSH | 2 |
| 49 | 317810 BRUSH HOLDER | 2 |
| 50 | 308536 SPRING | 2 |
| 51 | 325054 SWITCH HOLDER | 1 |
| 51 | 370012 SWITCH HOLDER NEW | 1 |
| 52 | 980063 TERMINAL | 2 |
| 53 | 984750 TAPPING SCREW (W/FLANGE) D4X16 | 2 |
| 54 | 937631 CORD CLIP | 1 |
| 55 | 953327 CORD ARMOR D8.8 | 1 |
| 56 | NAME PLATE | 1 |
| 57 | 301815 TAPPING SCREW D4X45 (W/FLANGE) | 2 |
| 58A | 334347 HITACHI LABEL (OLD 325058) | 1 |
| 59 | 325052 TAIL COVER | 1 |
| 61 | 319320 FASTEN TERMINAL | 2 |
| 62 | 949757 HEX.SOCKET HD BOLT M5X20 (10 PCS) | 1 |
| 63 | 370013 VARISTOR (B) NEW | 1 |
| 501 | 938332Z WRENCH | 1 |
| 502B | 318312 SIDE HANDLE | 1 |
| 503A | 336865 SIDE HANDLE (VIBRATION-ABSORBING) (OLD 325496) | 1 |
| 504A | 325515 CASE | 1 |
| 505 | 944458 HEX. BAR WRENCH 4MM | 1 |
| 603 | 314062 SANDING DISCS 125MM C-P16 (10 PCS.) | 1 |
| 604 | 314063 SANDING DISCS 125MM C-P20 (10 PCS.) | 1 |
| 605 | 314064 SANDING DISCS 125MM C-P24 (10 PCS.) | 1 |
| 606 | 314065 SANDING DISCS 125MM C-P30 (10 PCS.) | 1 |
| 607 | 314066 SANDING DISCS 125MM C-P36 (10 PCS.) | 1 |
| 608 | 314067 SANDING DISCS 125MM C-P40 (10 PCS.) | 1 |
| 609 | 314068 SANDING DISCS 125MM C-P50 (10 PCS.) | 1 |
| 610 | 314069 SANDING DISCS 125MM C-P60 (10 PCS.) | 1 |
| 611 | 314070 SANDING DISCS 125MM C-P80 (10 PCS.) | 1 |
| 612 | 314071 SANDING DISCS 125MM C-P100 (10 PCS.) | 1 |
| 613 | 314072 SANDING DISCS 125MM C-P120 (10 PCS.) | 1 |
| 614 | 994312 @ WHEEL WASHER | 1 |
| 615 | 994313 WHEEL WASHER (C) FOR D22.2 HOLE | 1 |
| 616 | 310338 SUPER WHEEL WASHER | 1 |
| 617 | 332787 CUTTING WHEEL GUARD 125 MM WITH BASE | 1 |
| 618 | 332788 CUTTING WHEEL GUARD 125 MM W/O BASE | 1 |



Rev.14